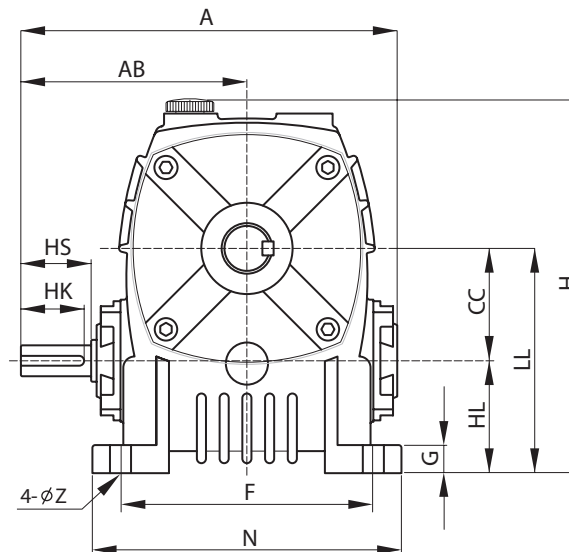
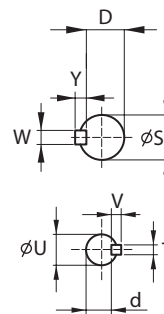
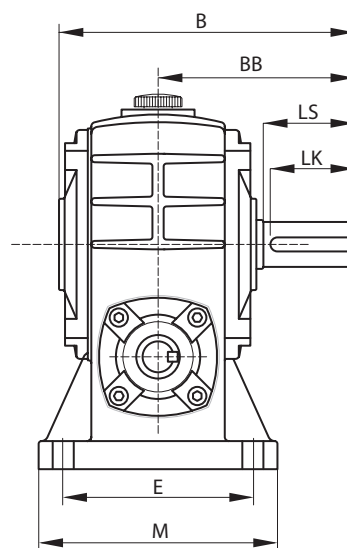


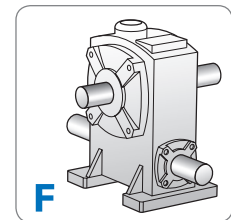
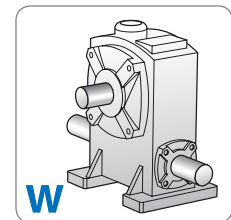
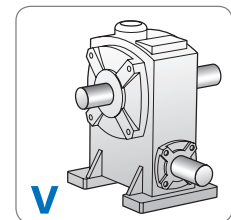
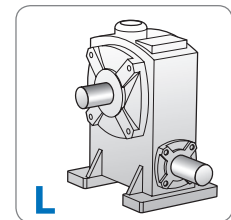
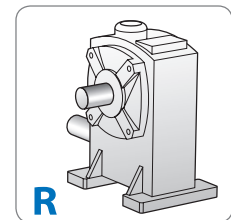


# 單段蝸輪減速機

### MODEL TA



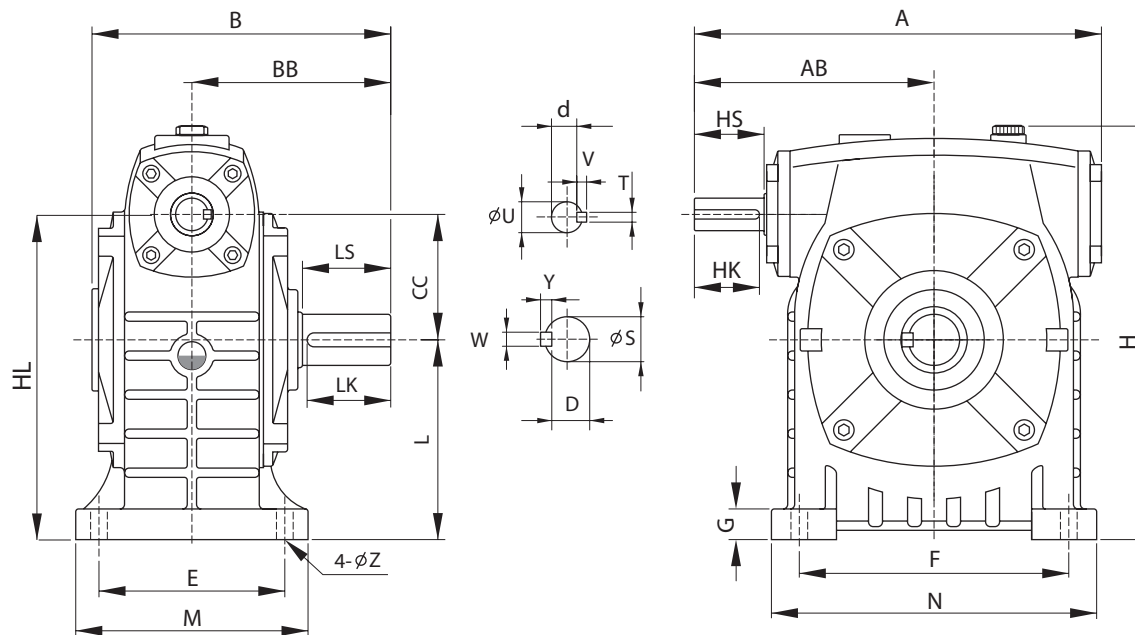
### 軸向選擇



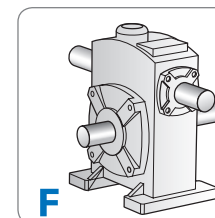
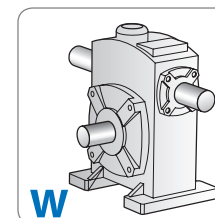
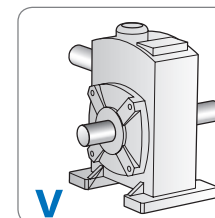
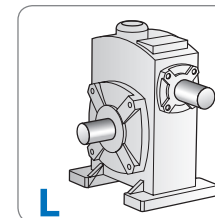
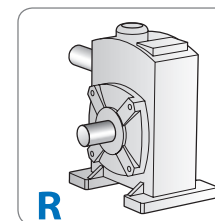
### 尺寸表 DIMENSION (m/m)

減速比 / 馬力 HP			A	AB	B	BB	CC	H	HL	LL	腳座				入力軸				出力軸				重量 KG		
型號	1/10~1/30	1/40~1/60									E	F	M	N	G	Z	HS	U	d	TxVxHK	LS	S		D	WxYxLK
50	1/4	-	178	105	149	98	50	179	50	100	95	110	120	140	15	11	30	12	9.5	4x4x25	40	17	14	5x5x35	6.6
60	1/2	1/4	198	120	164	110	60	200	60	120	105	120	130	150	20	11	40	15	12	5x5x35	50	22	18	7x7x45	9
70	1	1/2	235	140	193	130	70	240	70	140	115	150	150	190	20	15	40	18	15	5x5x35	60	28	24	7x7x55	13.4
80	2	1	268	161	210	140	80	266	80	160	135	180	170	220	20	15	50	22	18	7x7x45	65	32	27	10x8x60	19
100	3	2	322	190	260	170	100	337	100	200	155	220	195	270	25	15	50	25	21	7x7x45	75	38	33	10x8x70	36
120	5	3	390	231	288	190	120	398	120	240	180	260	230	320	30	18	65	30	26	7x7x60	85	45	40	12x8x80	59
135	7-1/2	5	438	258	322	214	135	440	135	270	200	290	250	350	32	18	75	35	30	10x8x70	95	55	49	15x10x90	80.6
155	10	7-1/2	491	292	392	253	155	490	135	290	220	320	280	390	38	20	85	40	35	10x8x80	110	60	54	15x10x105	110.4
175	15	10	555	325	412	262	175	565	160	335	250	350	315	415	40	22	85	45	40	12x8x80	110	65	59	18x10x105	151.2
200	20	15	604	352	483	311	200	651	175	375	290	350	360	420	42	22	95	50	45	12x8x90	125	70	63	20x12x120	203
225	25	20	650	375	523	335	225	693	190	415	330	390	410	470	45	27	95	55	49	15x10x90	140	80	73	20x12x135	277.2
250	30	25	728	422	555	359	250	781	200	450	380	440	460	520	50	27	110	60	54	15x10x105	155	90	80.5	24x16x150	325
300	40	30	864	498	601	387	300	840	190	490	368	520	450	620	55	36	125	70	63	18x10x120	170	95	85.5	24x16x160	480
350	50	40	945	570	735	480	350	981	215	565	432	597	520	700	55	43	145	80	73	20x12x135	190	115	104	32x20x185	-

MODEL  
**TB**



軸向選擇



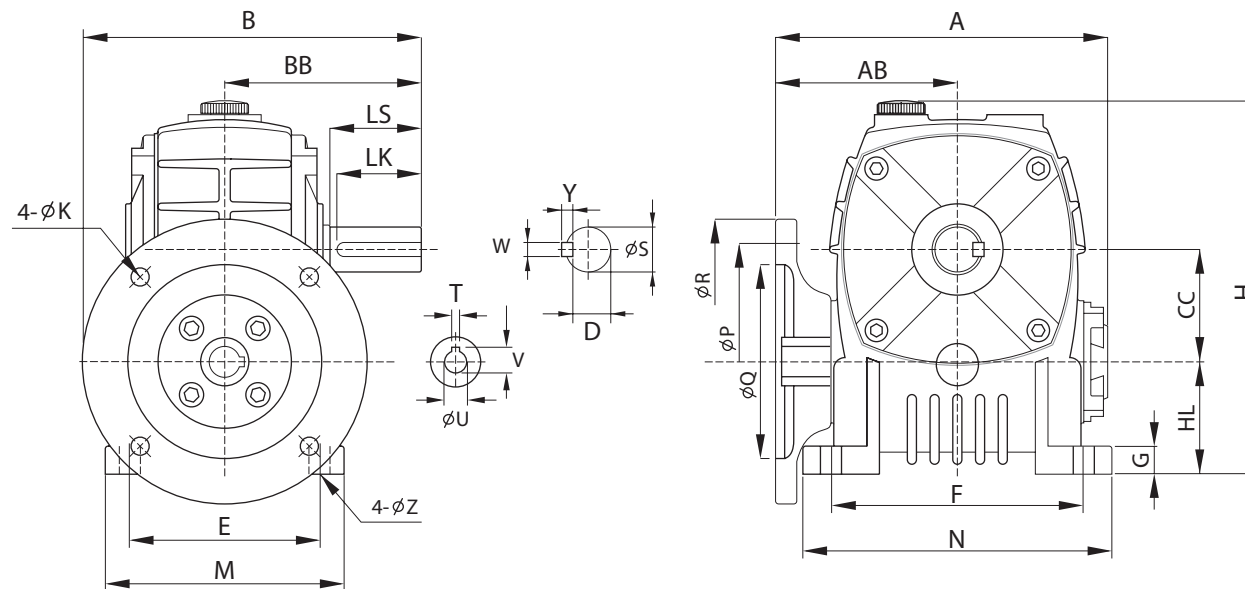
尺寸表 DIMENSION (m/m)

減速比 / 馬力 HP			A	AB	B	BB	CC	L	H	HL	腳座				入力軸				出力軸				重量 KG		
型號	1/10~1/30	1/40~1/60									E	F	M	N	G	Z	HS	U	d	TxVxHK	LS	S		D	WxYxLK
40	1/8	-	139.5	86	132	90	40	60	141	100	89	89	110	112	14	9	25	12	9.5	4x4x20	40	17	12	5x5x25	4
50	1/4	1/8	178	105	149	98	50	80	176	130	95	110	120	140	15	11	30	12	9.5	4x4x25	40	17	14	7x7x45	6.6
60	1/2	1/4	198	120	164	110	60	90	200	150	105	120	130	150	20	11	40	15	12	5x5x35	50	22	18	7x7x45	8.2
70	1	1/2	235	140	193	130	70	105	235	175	115	150	150	190	20	15	40	18	15	5x5x35	60	28	24	7x7x55	13.8
80	2	1	268	161	210	140	80	120	260	200	135	180	170	220	20	15	50	22	18	7x7x45	65	32	27	10x8x60	19
100	3	2	322	190	260	170	100	150	324	250	155	220	195	270	25	15	50	25	21	7x7x45	75	38	33	10x8x70	37
120	5	3	390	231	288	190	120	180	385	300	180	260	230	320	30	18	65	30	26	7x7x60	85	45	40	12x8x80	65.2
135	7-1/2	5	438	258	322	214	135	215	445	350	200	290	250	350	32	18	75	35	30	10x8x70	95	55	49	15x10x90	82.2
155	10	7-1/2	491	292	392	253	155	235	493	390	220	320	280	390	38	20	85	40	35	10x8x80	110	60	54	15x10x105	116.8
175	15	10	555	325	412	262	175	260	537	435	250	350	310	410	45	22	85	45	40	12x8x80	110	65	59	18x10x105	143.2

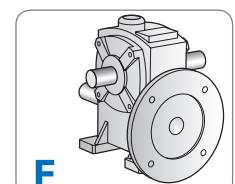
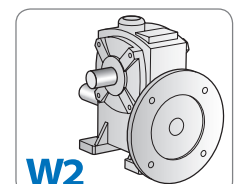
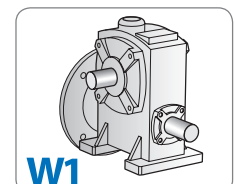
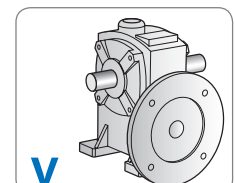
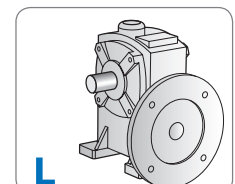
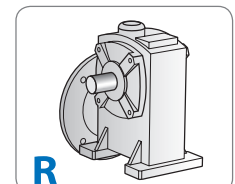


# 單段蝸輪減速機

### MODEL TMA



### 軸向選擇



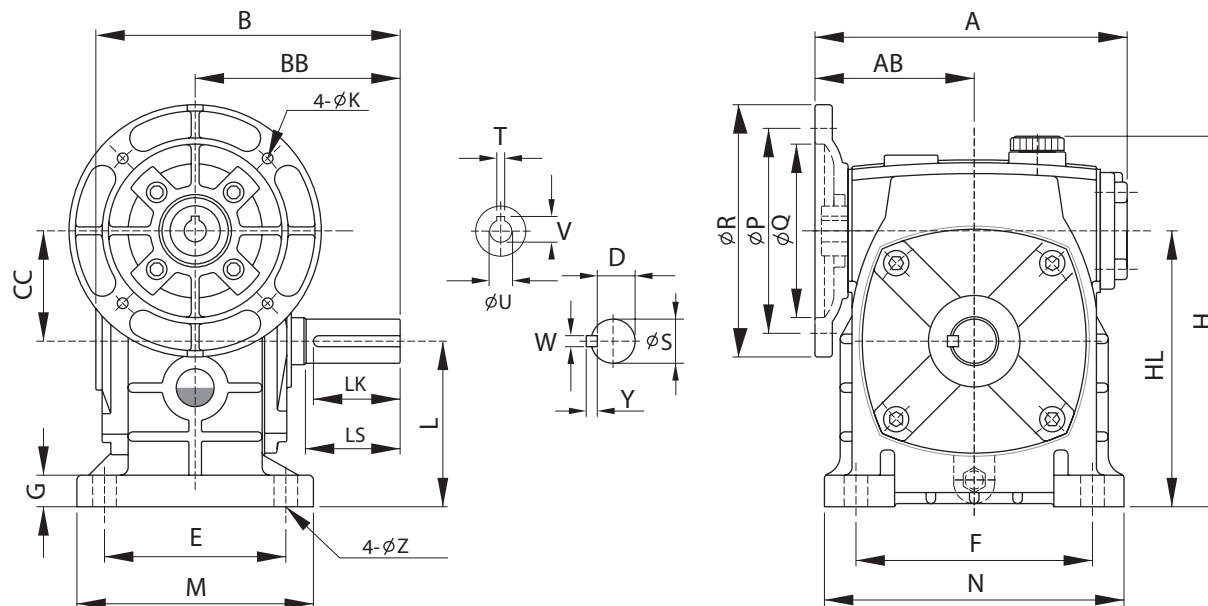
### 尺寸表 DIMENSION (m/m)

減速比 / 馬力 HP			A	AB	B	BB	CC	HL	H	腳座					馬達盤				入力孔			出力軸				重量 KG	
型號	1/10~1/30	1/40~1/60								E	F	M	N	G	Z	P	Q	R	K	V	T	U	LS	S	D		WxYxLK
60	1/2	1/4	167	86	190	110	60	60	202	105	120	130	150	20	11	130	110	160	M8	12.7 16.3	4 5	11 14	50	22	18	7x7x45	8.8
70	1	1/2	195	102	210 230	130	70	70	230	115	150	150	190	20	15	130 165	110 130	160 200	M8 M10	16.3 21.8	5 6	14 19	60	28	24	7x7x55	14.8
80	2	1	223	116	240	140	80	80	265	135	180	170	220	20	15	165	130	200	M10	21.8 27.3	6 8	19 24	65	32	27	10x8x60	20.2
100	3	2	278	144	270 295	170	100	100	337	155	220	195	270	25	15	165 215	130 180	200 250	M10 M12	27.3 31.3	8	24 28	75	38	33	10x8x70	37
120	5	3	323	164	315	190	120	120	398	180	260	230	320	30	18	215	180	250	M12	31.3	8	28	85	45	40	12x8x80	62.4
135	7-1/2	5	368	187	339 354	214	135	135	440	200	290	250	350	30	18	215 265	180 230	250 300	M12	31.3	8	28	95	55	49	15x10x90	81
155	10	7-1/2	412	212	403	253	155	135	490	220	320	280	385	38	20	265	230	300	M12	41.3	10	38	110	60	54	15x10x105	111.6



# 單段蝸輪減速機

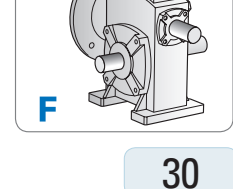
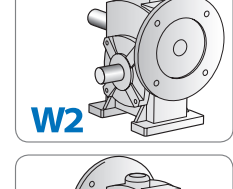
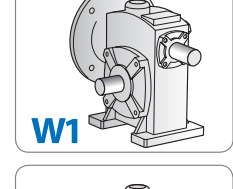
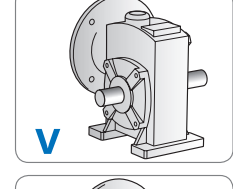
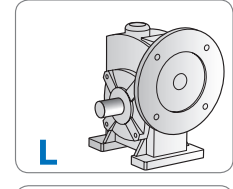
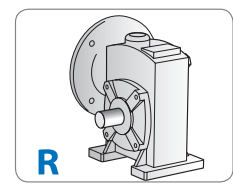
## MODEL TMB



尺寸表 DIMENSION (m/m)

減速比 / 馬力 HP			A	AB	B	BB	CC	HL	L	H	腳座					馬達盤				入力孔			出力軸				重量 KG	
型號	1/10~1/30	1/40~1/60									E	F	M	N	G	Z	P	Q	R	K	V	T	U	LS	S	D		WxYxLK
50	1/4	-	154	81	178	98	50	130	80	210	95	110	120	140	15	11	130	110	160	M8	12.7	4	11	40	17	14	7x7x45	7.6
60	1/2	1/4	164	86	190	110	60	150	90	230	105	120	130	150	20	11	130	110	160	M8	12.7 16.3	4 5	11 14	50	22	18	7x7x45	9.4
70	1	1/2	200	102	210 230	130	70	175	105	255 275	115	150	150	190	20	15	130 165	110 130	160 200	M8 M10	16.3 21.8	5 6	14 19	60	28	24	7x7x55	15.2
80	2	1	223	116	240	140	80	200	120	300	135	180	170	220	20	15	165	130	200	M10	21.8 27.3	6 8	19 24	65	32	27	10x8x60	21.2
100	3	2	276	144	270 295	170	100	250	150	350 375	155	220	195	270	25	15	165 215	130 180	200 250	M10 M12	27.3 31.3	8	24 28	75	38	33	10x8x70	40
120	5	3	323	164	315	190	120	300	180	425	180	260	230	320	30	18	215	180	250	M12	31.3	8	28	85	45	40	12x8x80	66.2
135	7-1/2	5	367	187	339 354	214	135	350	215	475 500	200	290	250	350	32	18	215 265	180 230	250 300	M12	31.3	8	28	95	55	49	15x10x90	82.6
155	10	7-1/2	405	206	403	253	155	390	235	540	220	320	280	385	38	20	265	230	300	M12	41.3	10	38	110	60	54	15x10x105	118
175	15	10	467	236	412 437	262	175	435	260	585 610	250	350	315	415	40	22	265 300	230 250	300 350	M12 M16	41.3 45.3	10 12	38 42	110	65	59	18x10x105	152.2

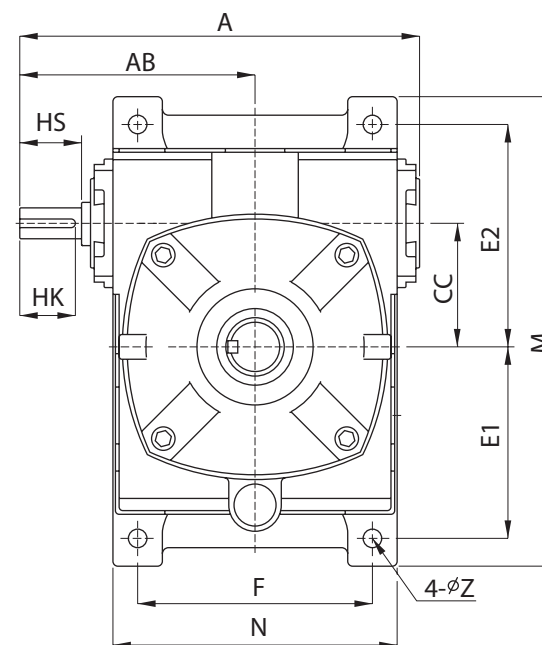
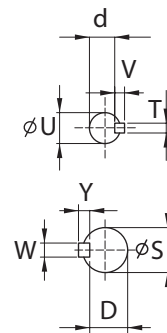
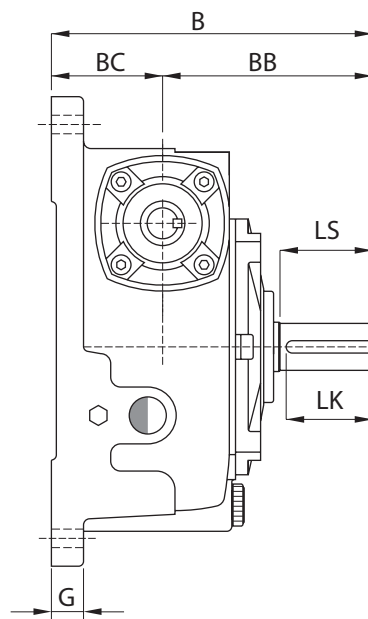
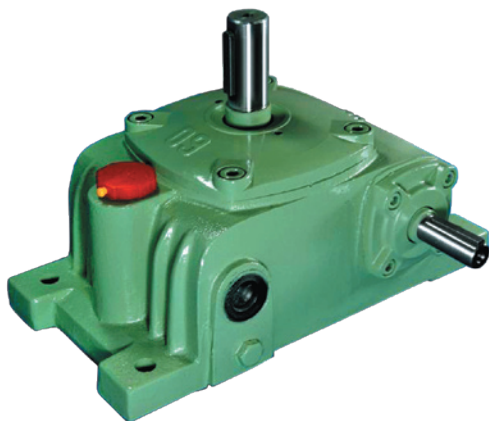
### 軸向選擇



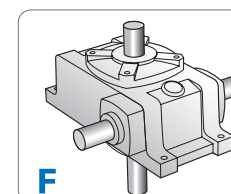
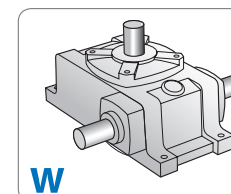
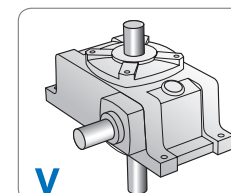
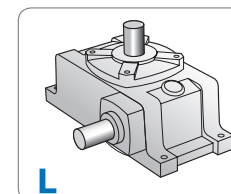
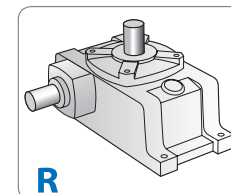


# 單段蝸輪減速機

### MODEL TE-U



### 軸向選擇



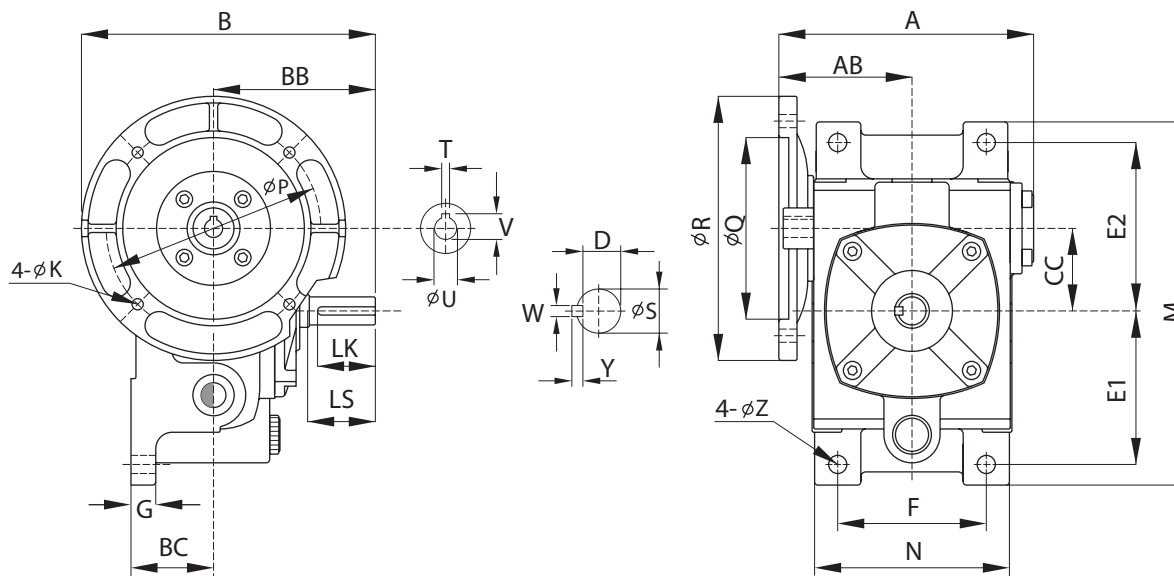
### 尺寸表 DIMENSION (m/m)

減速比 / 馬力 HP 型號 1/10~1/60	A	AB	B	BB	BC	CC	腳座					入力軸				出力軸				重量 KG		
							E1	E2	F	M	N	G	Z	HS	U	d	TxVxHK	LS	S		D	WxYxLK
50	178	105	149	98	50	50	93	102	90	220	118	15	11	30	12	9.5	4x4x25	40	17	14	5x5x35	6.8
60	198	120	164	110	55	60	105	120	100	262	128	18	11	40	15	12	5x5x35	50	22	18	7x7x45	9.2
70	235	140	193	130	65	70	120	135	120	298	160	20	15	40	18	15	5x5x35	60	28	24	7x7x55	14.4
80	268	161	210	140	70	80	130	150	150	315	180	20	15	50	22	18	7x7x45	65	32	27	10x8x60	19.4
100	322	190	260	170	90	100	135	180	180	380	230	30	15	50	25	21	7x7x45	75	38	33	10x8x70	38.6
120	390	231	288	190	100	120	185	215	220	450	266	30	18	65	30	26	7x7x60	85	45	40	12x8x80	62
135	438	258	322	214	110	135	210	235	260	495	305	35	18	75	35	30	10x8x70	95	55	49	15x10x90	83
155	491	292	392	253	140	155	145	265	290	460	340	45	20	85	40	35	10x8x80	110	60	54	15x10x105	106.8
175	555	325	412	262	150	175	167	293	320	516	385	45	22	85	45	40	12x8x80	110	65	59	18x10x105	141

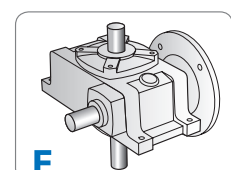
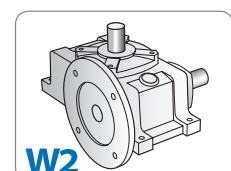
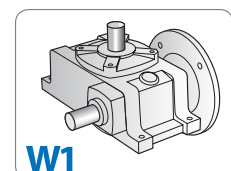
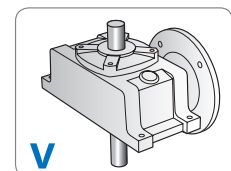
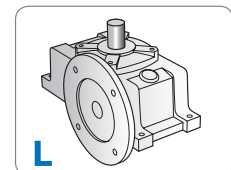
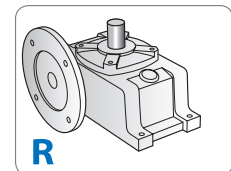


# 單段蝸輪減速機

### MODEL TNU



### 軸向選擇



### 尺寸表 DIMENSION (m/m)

減速比 / 馬力 HP			A	AB	B	BB	BC	CC	腳座						馬達盤				入力孔			出力軸				重量 KG		
型號	1/10~1/30	1/40~1/60							E1	E2	F	M	N	G	Z	P	Q	R	K	V	T	U	LS	S	D	WxYxLK	VMW	UMW
50	1/4	-	154	81	178	98	50	50	93	102	90	220	118	15	11	130	110	160	M8	12.7	4	11	40	17	14	5x5x35	7.2	7.2
60	1/2	1/4	164	86	190	110	55	60	105	120	100	262	128	18	11	130	110	160	M8	12.7 16.3	4 5	11 14	50	22	18	7x7x45	10.2	10.2
70	1	1/2	200	102	210 230	130	65	70	115	135	120	298	160	20	15	130 165	110 130	160 200	M8 M10	16.3 21.8	5 6	14 19	60	28	24	7x7x55	14.4	14.4
80	2	1	223	116	240	140	70	80	135	150	140	315	180	20	15	165	130	200	M10	21.8 27.3	6 8	19 24	65	32	27	10x8x60	21.2	20.6
100	3	2	276	144	270 295	170	90	100	155	180	190	380	230	30	15	165 215	130 180	200 250	M10 M12	27.3 31.3	8	24 28	75	38	33	10x8x70	43	43
120	5	3	323	164	315	190	100	120	185	215	220	450	266	30	18	215	180	250	M12	31.3	8	28	85	45	40	12x8x80	65	65
135	7-1/2	5	367	187	339 354	214	110	135	210	235	260	495	305	35	18	215 265	180 230	250 300	M12	31.3	8	28	95	55	49	15x10x90	85.2	85.2
155	10	7-1/2	405	206	403	253	140	155	145	265	290	460	340	45	20	265	230	300	M12	41.3	10	38	110	60	54	15x10x105	108	108
175	15	10	467	236	412 437	262	150	175	167	293	320	516	385	45	22	265 300	230 250	300 350	M12 M16	41.3 45.3	10 12	38 42	110	65	59	18x10x105	150	150