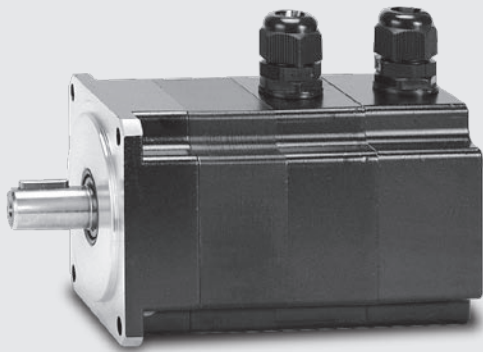
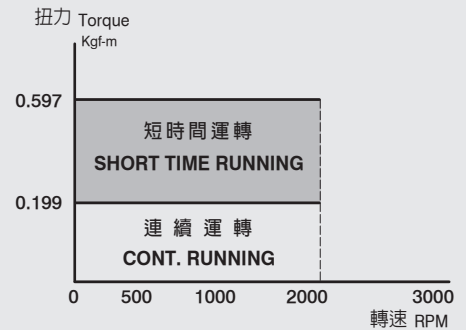


LDSM85-AS

永磁同步伺服馬達 Permanent Magnetic Synchronous Servo Motor

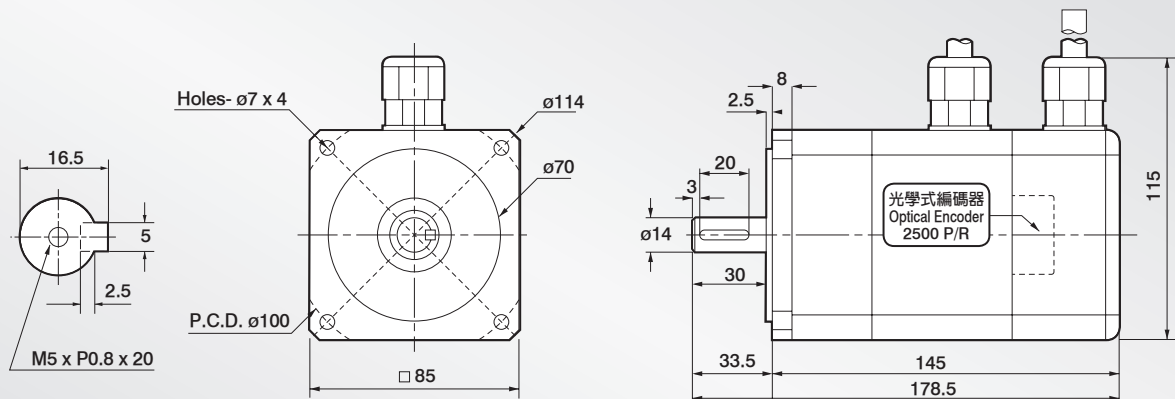


T-M 扭力轉速曲線圖
T-M Torque/Speed Diagram



外觀尺寸圖 Dimensions:

UNIT:mm

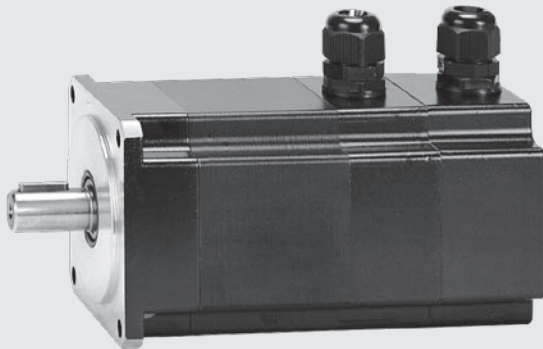


技術資料 Servo Motor Technical Datasheet:

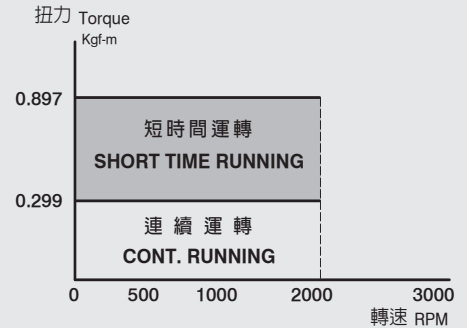
Model		LDSM85-AS		
項目	符號 Code	單位 Unit	200V	
額定輸出	Rated output	PR	kW	0.4
適用驅動器 (額定)	Applicable driver	ldry	A	≥ 5
額定轉矩	Rated torque	TR	Kgf-m	0.199
額定電流	Rated current	IR	A	2.42
額定轉速	Rated speed	NR	rpm	2000
瞬間最大轉矩	Instant max. torque	TP	Kgf-m	0.597
瞬間最大電流	Instant max. current	IP	A	7.25
最大轉速	Max. speed	Nmax	rpm	3000
轉矩常數	Torque constant	KT	N•m/A	0.81
感應電壓常數	Induction voltage constant	KE	V/k rpm	45
轉子慣量 (J)	Rotor inertia (J)	JM	kg/cm ²	1.86
轉子飛輪效應	Rotor flywheel effect	GD ²	kg/cm ²	7.44
重量 (標準)	Weight (Standard)	W	kg	3

LDSM85-BS

永磁同步伺服馬達 Permanent Magnetic Synchronous Servo Motor

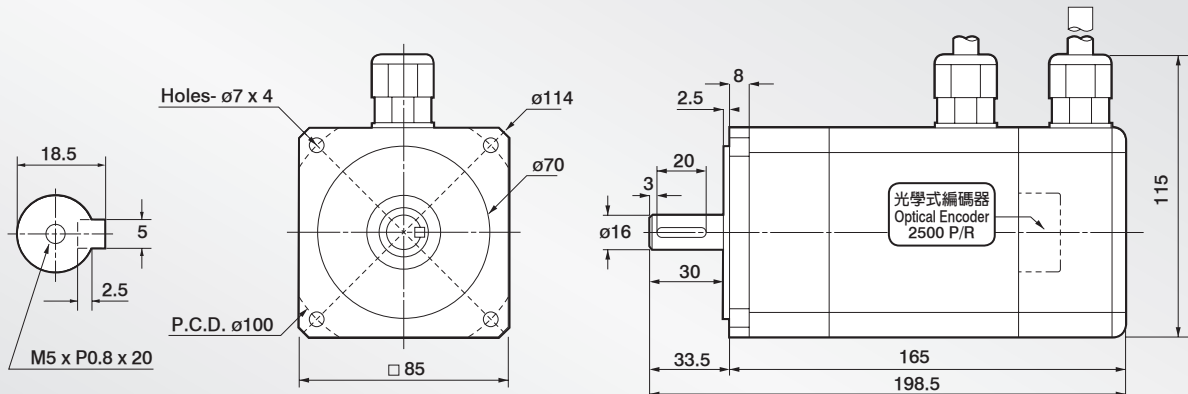


T-M 扭力轉速曲線圖
T-M Torque/Speed Diagram



外觀尺寸圖 Dimensions:

UNIT:mm

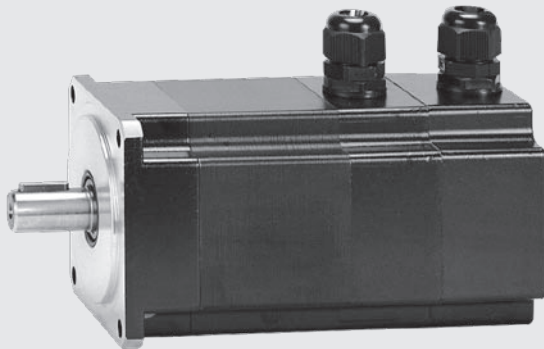


技術資料 Servo Motor Technical Datasheet:

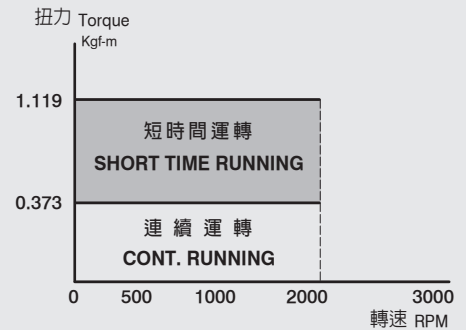
Model		LDSM85-BS		
項目		符號 Code	單位 Unit	200V
額定輸出	Rated output	PR	kW	0.6
適用驅動器 (額定)	Applicable driver	Idry	A	≥ 5
額定轉矩	Rated torque	TR	Kgf-m	0.299
額定電流	Rated current	IR	A	3.63
額定轉速	Rated speed	NR	rpm	2000
瞬間最大轉矩	Instant max. torque	TP	Kgf-m	0.897
瞬間最大電流	Instant max. current	IP	A	10.9
最大轉速	Max. speed	Nmax	rpm	3000
轉矩常數	Torque constant	KT	N•m/A	0.81
感應電壓常數	Induction voltage constant	KE	V/k rpm	45
轉子慣量 (J)	Rotor inertia (J)	JM	kg/cm ²	2.74
轉子飛輪效應	Rotor flywheel effect	GD ²	kg/cm ²	10.96
重量 (標準)	Weight (Standard)	W	kg	4

LDSM85-CS

永磁同步伺服馬達 Permanent Magnetic Synchronous Servo Motor

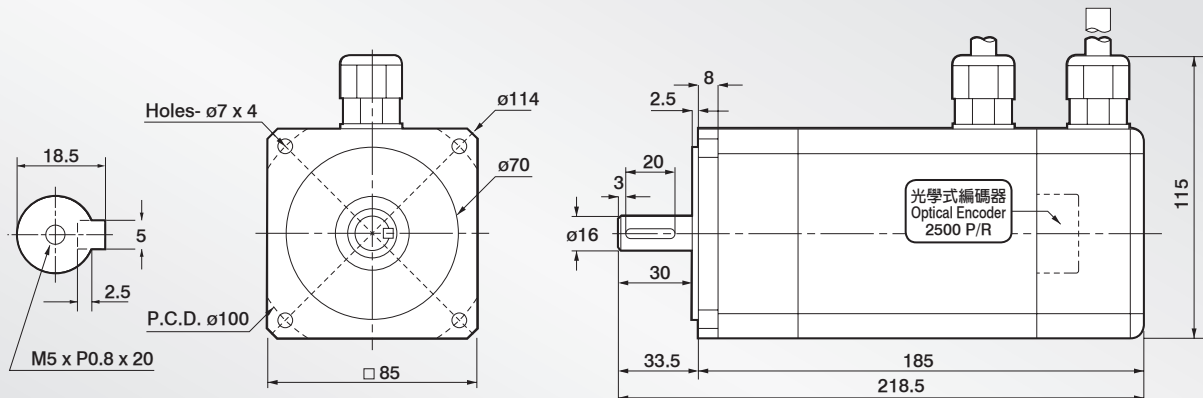


T-M 扭力轉速曲線圖
T-M Torque/Speed Diagram



外觀尺寸圖 Dimensions:

UNIT:mm

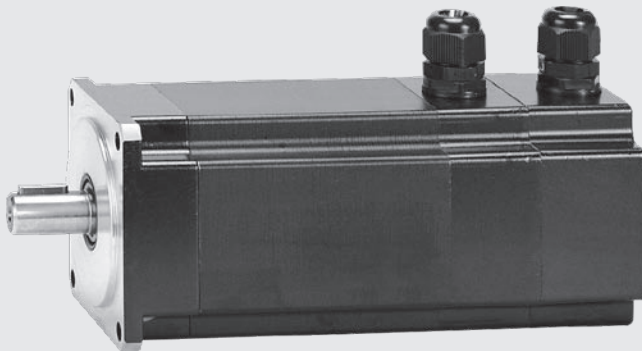


技術資料 Servo Motor Technical Datasheet:

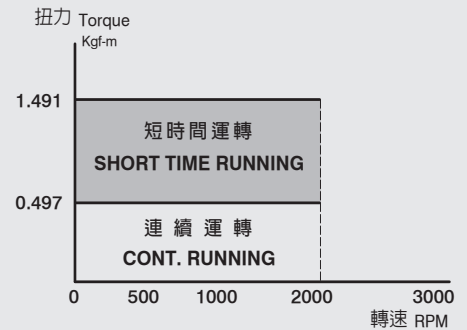
Model		LDSM85-CS		
項目	符號 Code	單位 Unit	200V	
額定輸出	Rated output	PR	kW	0.75
適用驅動器 (額定)	Applicable driver	Idry	A	≥ 5
額定轉矩	Rated torque	TR	Kgf-m	0.373
額定電流	Rated current	IR	A	4.53
額定轉速	Rated speed	NR	rpm	2000
瞬間最大轉矩	Instant max. torque	TP	Kgf-m	1.119
瞬間最大電流	Instant max. current	IP	A	13.6
最大轉速	Max. speed	Nmax	rpm	3000
轉矩常數	Torque constant	KT	N•m/A	0.81
感應電壓常數	Induction voltage constant	KE	V/k rpm	45
轉子慣量 (J)	Rotor inertia (J)	JM	kg/cm ²	3.63
轉子飛輪效應	Rotor flywheel effect	GD ²	kg/cm ²	14.52
重量 (標準)	Weight (Standard)	W	kg	5

LDSM85-DS

永磁同步伺服馬達 Permanent Magnetic Synchronous Servo Motor

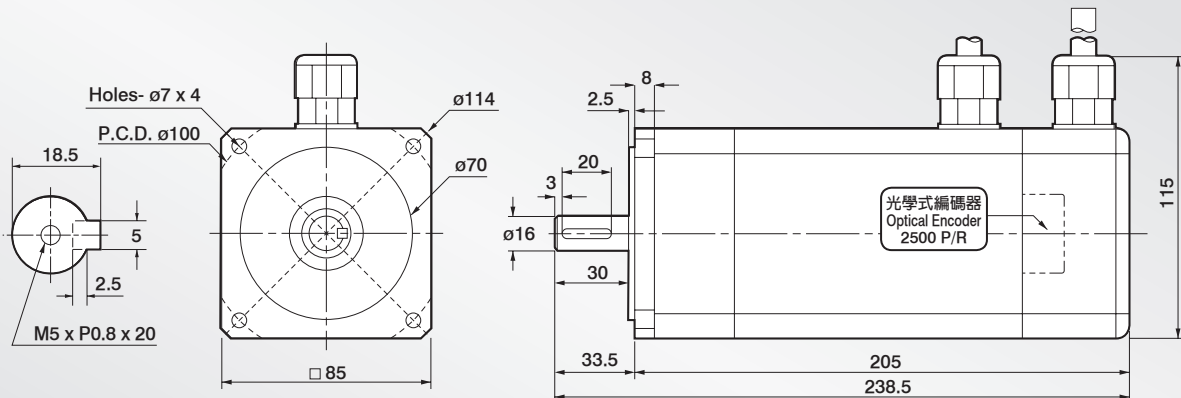


T-M 扭力轉速曲線圖
T-M Torque/Speed Diagram



外觀尺寸圖 Dimensions:

UNIT:mm



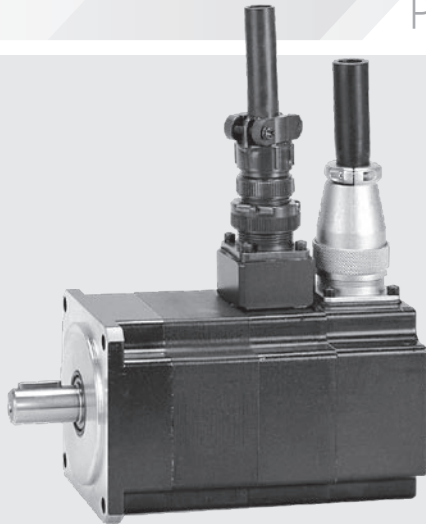
技術資料 Servo Motor Technical Datasheet:

Model		LDSM85-DS		
項目		符號 Code	單位 Unit	200V
額定輸出	Rated output	PR	kW	1
適用驅動器 (額定)	Applicable driver	Idry	A	≥ 5
額定轉矩	Rated torque	TR	Kgf-m	0.497
額定電流	Rated current	IR	A	6.04
額定轉速	Rated speed	NR	rpm	2000
瞬間最大轉矩	Instant max. torque	TP	Kgf-m	1.491
瞬間最大電流	Instant max. current	IP	A	18.1
最大轉速	Max. speed	Nmax	rpm	3000
轉矩常數	Torque constant	KT	N•m/A	0.81
感應電壓常數	Induction voltage constant	KE	V/k rpm	45
轉子慣量 (J)	Rotor inertia (J)	JM	kg/cm ²	4.51
轉子飛輪效應	Rotor flywheel effect	GD ²	kg/cm ²	18.04
重量 (標準)	Weight (Standard)	W	kg	6

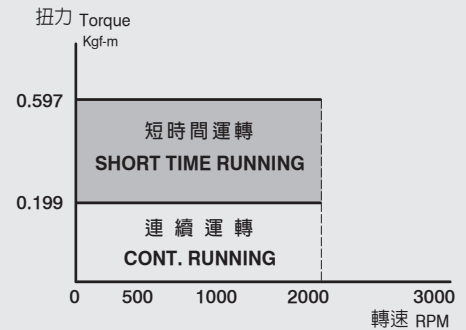
LDSM85-A

永磁同步伺服馬達

Permanent Magnetic Synchronous Servo Motor

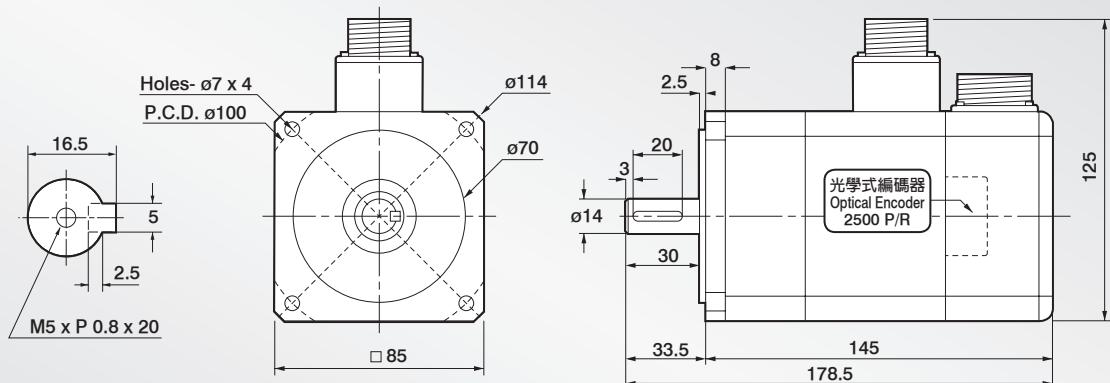


T-M 扭力轉速曲線圖
T-M Torque/Speed Diagram



外觀尺寸圖 Dimensions:

UNIT:mm



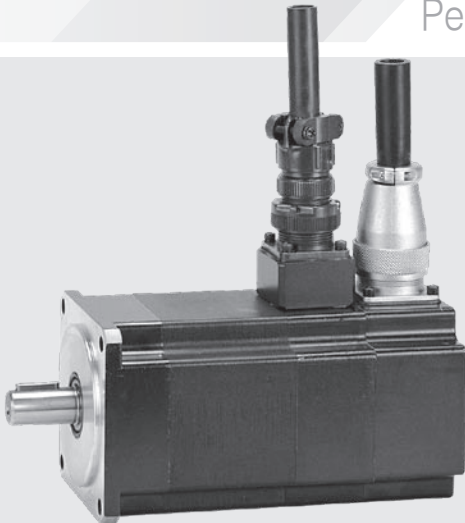
技術資料 Servo Motor Technical Datasheet:

Model		LDSM85-A		
項目	符號 Code	單位 Unit	200V	
額定輸出	Rated output	PR	kW	0.4
適用驅動器(額定)	Applicable driver	Idry	A	≥ 5
額定轉矩	Rated torque	TR	Kgf-m	0.199
額定電流	Rated current	IR	A	2.42
額定轉速	Rated speed	NR	rpm	2000
瞬間最大轉矩	Instant max. torque	TP	Kgf-m	0.597
瞬間最大電流	Instant max. current	IP	A	7.25
最大轉速	Max. speed	Nmax	rpm	3000
轉矩常數	Torque constant	KT	N•m/A	0.81
感應電壓常數	Induction voltage constant	KE	V/k rpm	45
轉子慣量(J)	Rotor inertia (J)	JM	kg/cm ²	1.86
轉子飛輪效應	Rotor flywheel effect	GD ²	kg/cm ²	7.44
重量(標準)	Weight (Standard)	W	kg	3

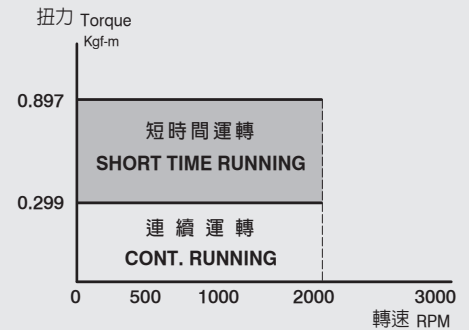
LDSM85-B

永磁同步伺服馬達

Permanent Magnetic Synchronous Servo Motor

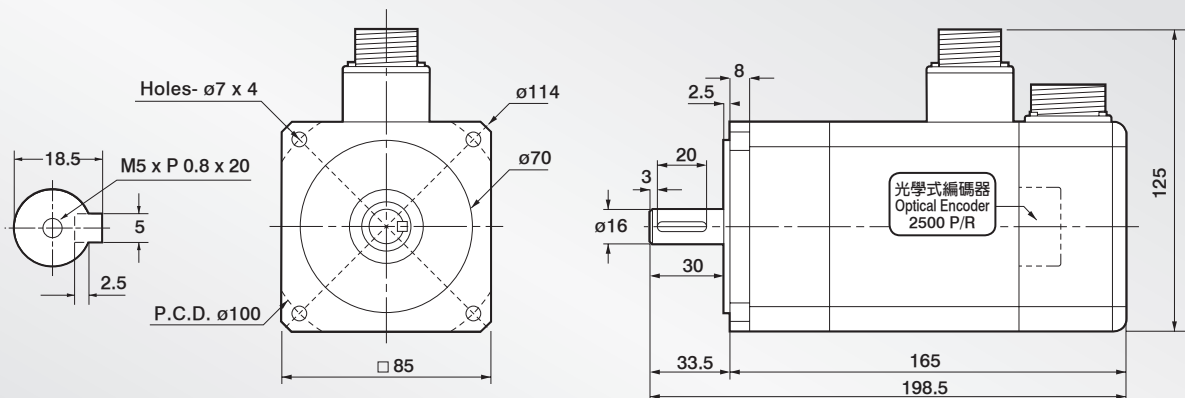


T-M 扭力轉速曲線圖
T-M Torque/Speed Diagram



外觀尺寸圖 Dimensions:

UNIT:mm



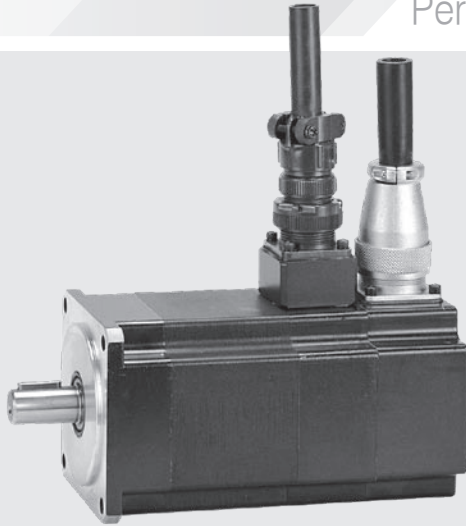
技術資料 Servo Motor Technical Datasheet:

Model		LDSM85-B		
項目		符號 Code	單位 Unit	200V
額定輸出	Rated output	PR	kW	0.6
適用驅動器 (額定)	Applicable driver	Idry	A	≥ 5
額定轉矩	Rated torque	TR	Kgf-m	0.299
額定電流	Rated current	IR	A	3.63
額定轉速	Rated speed	NR	rpm	2000
瞬間最大轉矩	Instant max. torque	TP	Kgf-m	0.897
瞬間最大電流	Instant max. current	IP	A	10.9
最大轉速	Max. speed	Nmax	rpm	3000
轉矩常數	Torque constant	KT	N·m/A	0.81
感應電壓常數	Induction voltage constant	KE	V/k rpm	45
轉子慣量 (J)	Rotor inertia (J)	JM	kg/cm ²	2.74
轉子飛輪效應	Rotor flywheel effect	GD ²	kg/cm ²	10.96
重量 (標準)	Weight (Standard)	W	kg	4

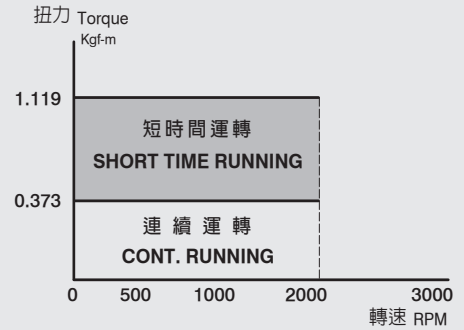
LDSM85-C

永磁同步伺服馬達

Permanent Magnetic Synchronous Servo Motor

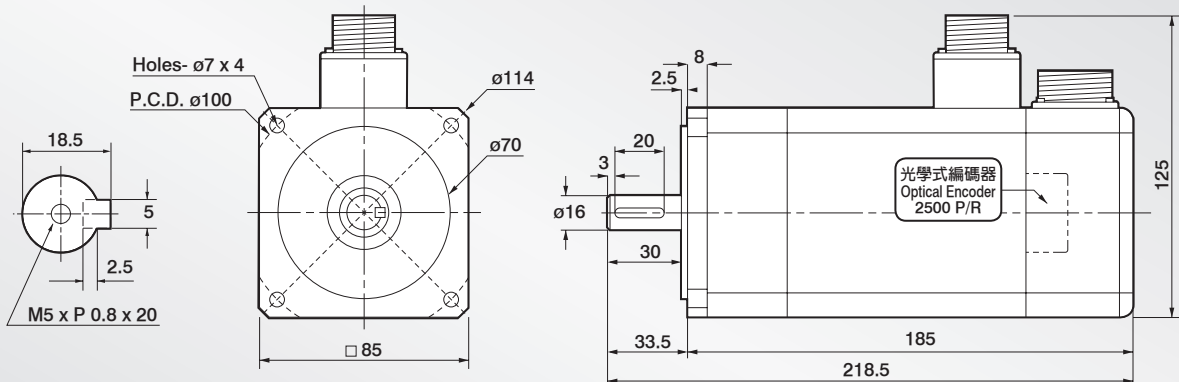


T-M 扭力轉速曲線圖
T-M Torque/Speed Diagram



外觀尺寸圖 Dimensions:

UNIT:mm



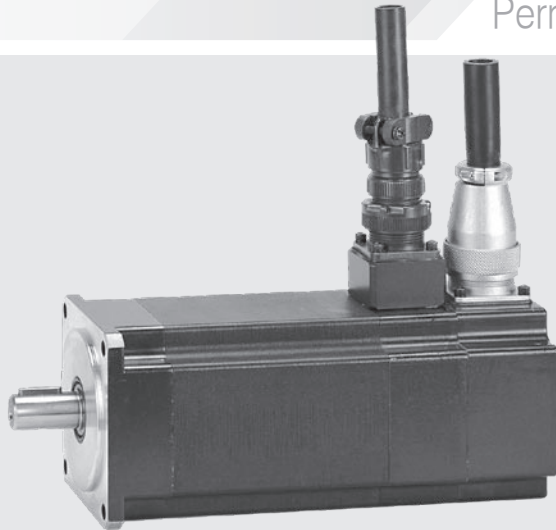
技術資料 Servo Motor Technical Datasheet:

Model		LDSM85-C		
項目	符號 Code	單位 Unit	200V	
額定輸出	Rated output	PR	kW	0.75
適用驅動器 (額定)	Applicable driver	Idry	A	≥ 5
額定轉矩	Rated torque	TR	Kgf-m	0.373
額定電流	Rated current	IR	A	4.53
額定轉速	Rated speed	NR	rpm	2000
瞬間最大轉矩	Instant max. torque	TP	Kgf-m	1.119
瞬間最大電流	Instant max. current	IP	A	13.6
最大轉速	Max. speed	Nmax	rpm	3000
轉矩常數	Torque constant	KT	N•m/A	0.81
感應電壓常數	Induction voltage constant	KE	V/k rpm	45
轉子慣量 (J)	Rotor inertia (J)	JM	kg/cm ²	3.63
轉子飛輪效應	Rotor flywheel effect	GD ²	kg/cm ²	14.52
重量 (標準)	Weight (Standard)	W	kg	5

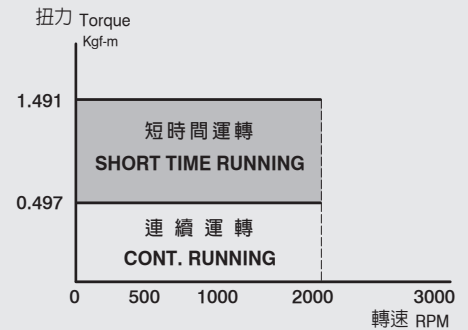
LDSM85-D

永磁同步伺服馬達

Permanent Magnetic Synchronous Servo Motor

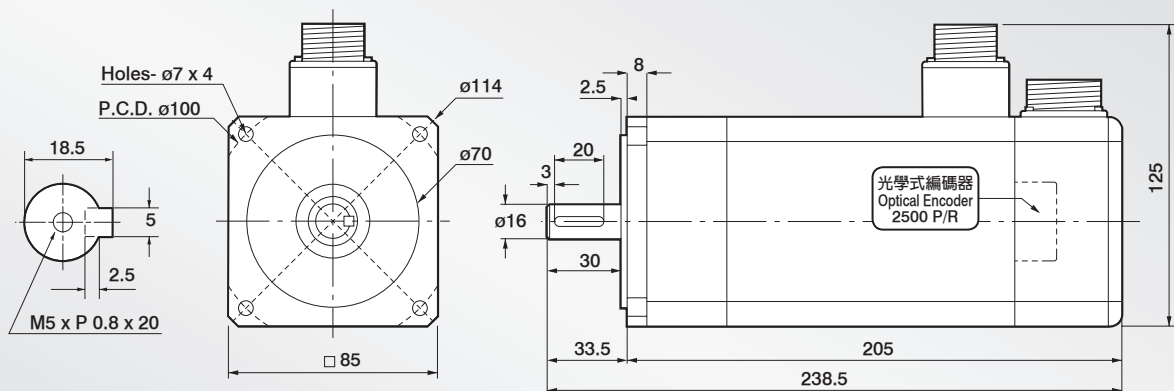


T-M 扭力轉速曲線圖
T-M Torque/Speed Diagram



外觀尺寸圖 Dimensions:

UNIT:mm



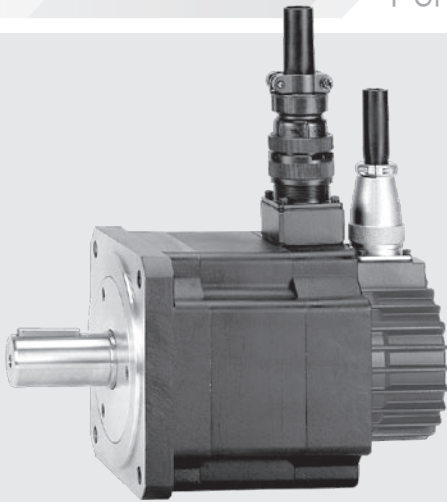
技術資料 Servo Motor Technical Datasheet:

Model		LDSM85-D		
項目		符號 Code	單位 Unit	200V
額定輸出	Rated output	PR	kW	1
適用驅動器 (額定)	Applicable driver	Idry	A	≥ 5
額定轉矩	Rated torque	TR	Kgf-m	0.497
額定電流	Rated current	IR	A	6.04
額定轉速	Rated speed	NR	rpm	2000
瞬間最大轉矩	Instant max. torque	TP	Kgf-m	1.491
瞬間最大電流	Instant max. current	IP	A	18.1
最大轉速	Max. speed	Nmax	rpm	3000
轉矩常數	Torque constant	KT	N•m/A	0.81
感應電壓常數	Induction voltage constant	KE	V/k rpm	45
轉子慣量 (J)	Rotor inertia (J)	JM	kg/cm ²	4.51
轉子飛輪效應	Rotor flywheel effect	GD ²	kg/cm ²	18.04
重量 (標準)	Weight (Standard)	W	kg	6

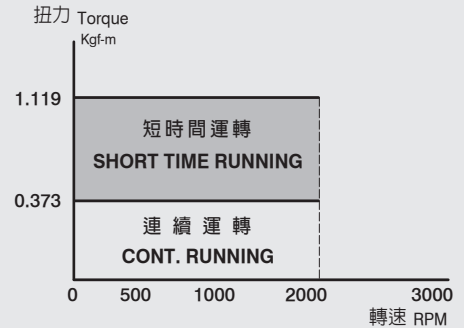
LDSM 125-A

永磁同步伺服馬達

Permanent Magnetic Synchronous Servo Motor

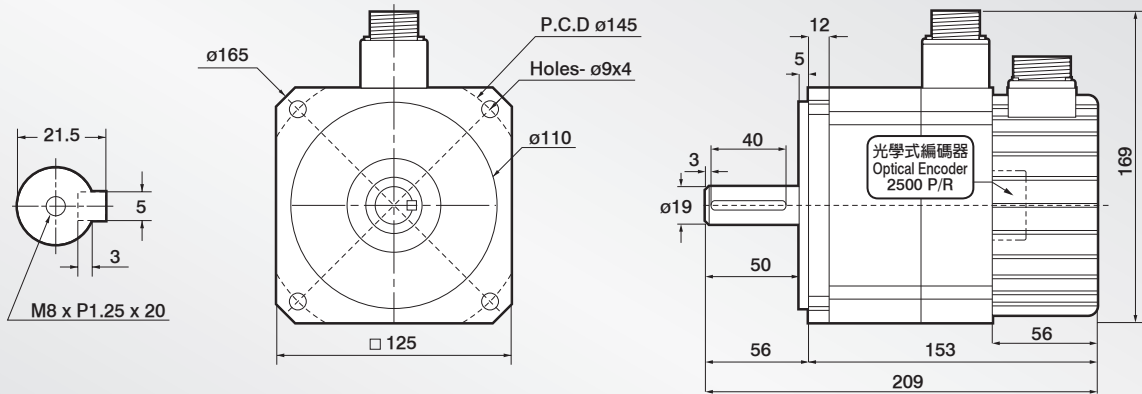


T-M 扭力轉速曲線圖
T-M Torque/Speed Diagram



外觀尺寸圖 Dimensions:

UNIT:mm



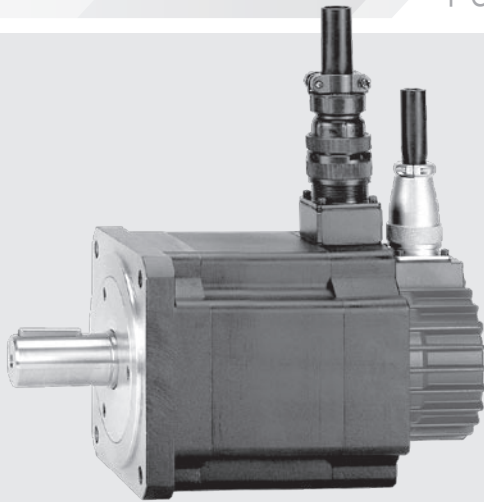
技術資料 Servo Motor Technical Datasheet:

Model		LDSM125-A			
項目		符號 Code	單位 Unit	200V	400V
額定輸出	Rated output	PR	kW	0.75	0.75
適用驅動器(額定)	Applicable driver	ldry	A	≥ 5	≥ 5
額定轉矩	Rated torque	TR	Kgf-m	0.373	0.373
額定電流	Rated current	IR	A	3.4	1.7
額定轉速	Rated speed	NR	rpm	2000	2000
瞬間最大轉矩	Instant max. torque	TP	Kgf-m	1.119	1.119
瞬間最大電流	Instant max. current	IP	A	10.2	5.1
最大轉速	Max. speed	Nmax	rpm	3000	3000
轉矩常數	Torque constant	KT	N•m/A	1.08	2.15
感應電壓常數	Induction voltage constant	KE	V/k rpm	60	120
轉子慣量(J)	Rotor inertia (J)	JM	kg/cm ²	7.35	7.35
轉子飛輪效應	Rotor flywheel effect	GD ²	kg/cm ²	29.4	29.4
重量(標準)	Weight (Standard)	W	kg	5.5	5.5

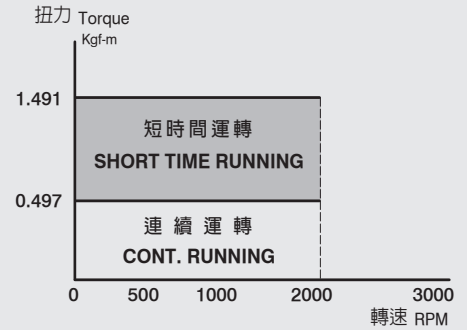
LDSM125-B

永磁同步伺服馬達

Permanent Magnetic Synchronous Servo Motor

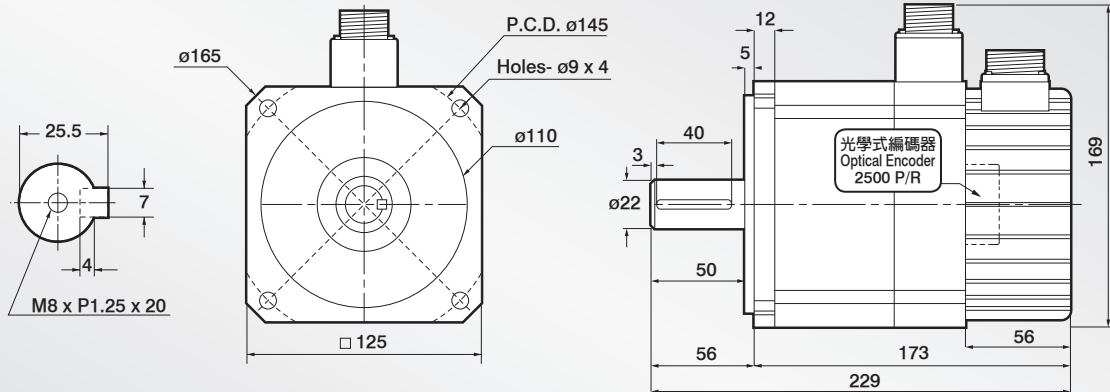


T-M 扭力轉速曲線圖
T-M Torque/Speed Diagram



外觀尺寸圖 Dimensions:

UNIT:mm



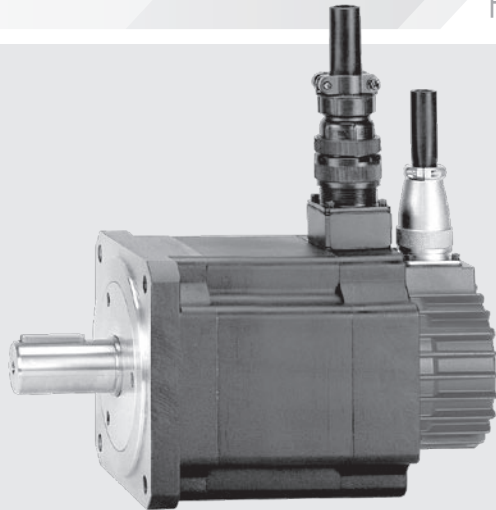
技術資料 Servo Motor Technical Datasheet:

Model		LDSM125-B			
項目		符號 Code	單位 Unit	200V	400V
額定輸出	Rated output	PR	kW	1	1
適用驅動器 (額定)	Applicable driver	Idry	A	≥ 5	≥ 5
額定轉矩	Rated torque	TR	Kgf-m	0.497	0.497
額定電流	Rated current	IR	A	4.53	2.26
額定轉速	Rated speed	NR	rpm	2000	2000
瞬間最大轉矩	Instant max. torque	TP	Kgf-m	1.491	1.491
瞬間最大電流	Instant max. current	IP	A	13.6	6.79
最大轉速	Max. speed	Nmax	rpm	3000	3000
轉矩常數	Torque constant	KT	N·m/A	1.08	2.15
感應電壓常數	Induction voltage constant	KE	V/k rpm	60	120
轉子慣量 (J)	Rotor inertia (J)	JM	kg/cm ²	11.94	11.94
轉子飛輪效應	Rotor flywheel effect	GD ²	kg/cm ²	47.76	47.76
重量 (標準)	Weight (Standard)	W	kg	6.5	6.5

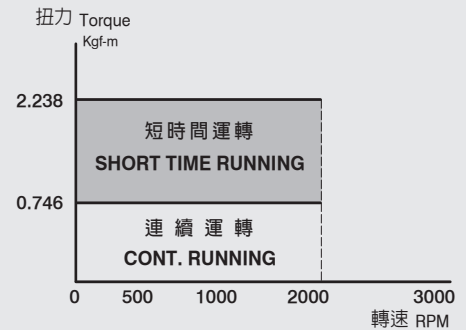
LDSM125-C

永磁同步伺服馬達

Permanent Magnetic Synchronous Servo Motor

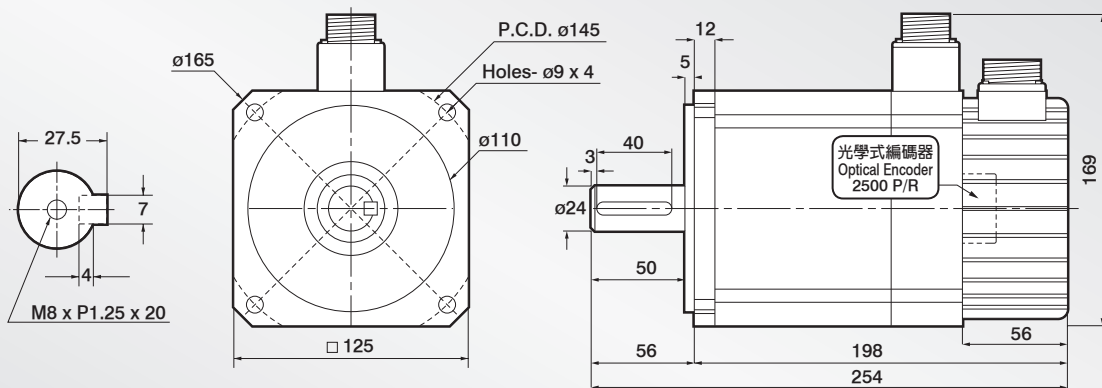


T-M 扭力轉速曲線圖
T-M Torque/Speed Diagram



外觀尺寸圖 Dimensions:

UNIT:mm



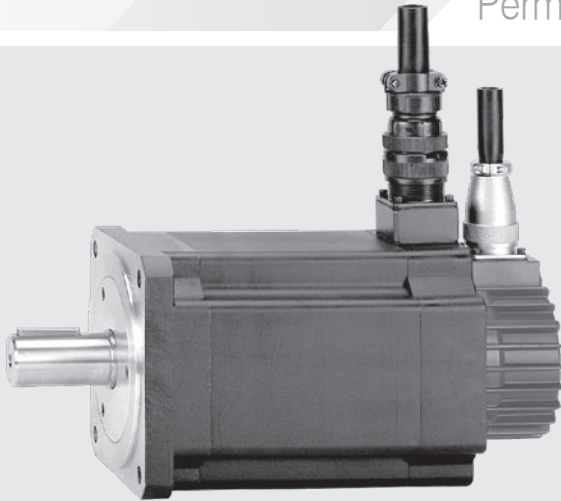
技術資料 Servo Motor Technical Datasheet:

Model		LDSM125-C			
項目		符號 Code	單位 Unit	200V	400V
額定輸出	Rated output	PR	kW	1.5	1.5
適用驅動器(額定)	Applicable driver	Idry	A	≥ 10	≥ 5
額定轉矩	Rated torque	TR	Kgf-m	0.746	0.746
額定電流	Rated current	IR	A	6.8	3.4
額定轉速	Rated speed	NR	rpm	2000	2000
瞬間最大轉矩	Instant max. torque	TP	Kgf-m	2.238	2,238
瞬間最大電流	Instant max. current	IP	A	20.4	10.2
最大轉速	Max. speed	Nmax	rpm	3000	3000
轉矩常數	Torque constant	KT	N•m/A	1.08	2.15
感應電壓常數	Induction voltage constant	KE	V/k rpm	60	120
轉子慣量(J)	Rotor inertia (J)	JM	kg/cm ²	17.6	17.6
轉子飛輪效應	Rotor flywheel effect	GD ²	kg/cm ²	70.4	70.4
重量(標準)	Weight (Standard)	W	kg	9.4	9.4

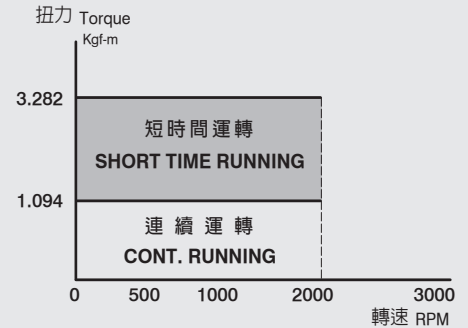
LDSM125-D

永磁同步伺服馬達

Permanent Magnetic Synchronous Servo Motor

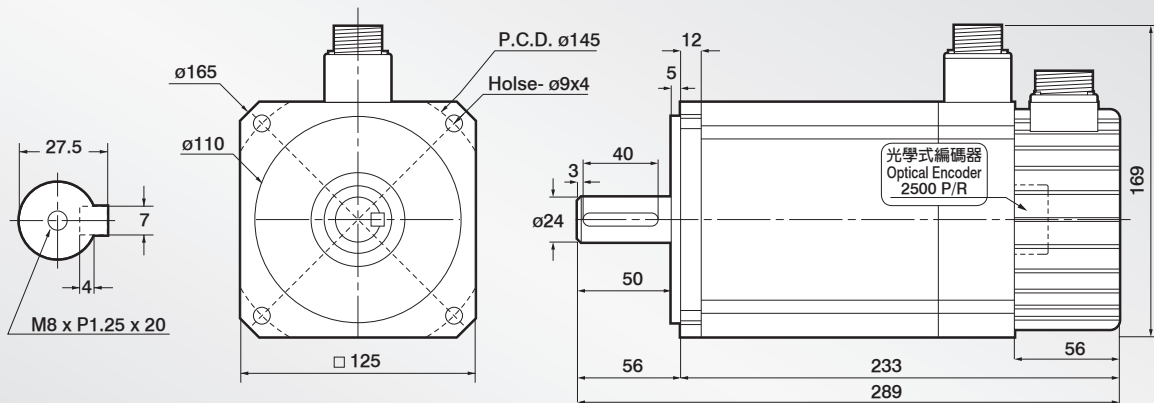


T-M 扭力轉速曲線圖
T-M Torque/Speed Diagram



外觀尺寸圖 Dimensions:

UNIT:mm



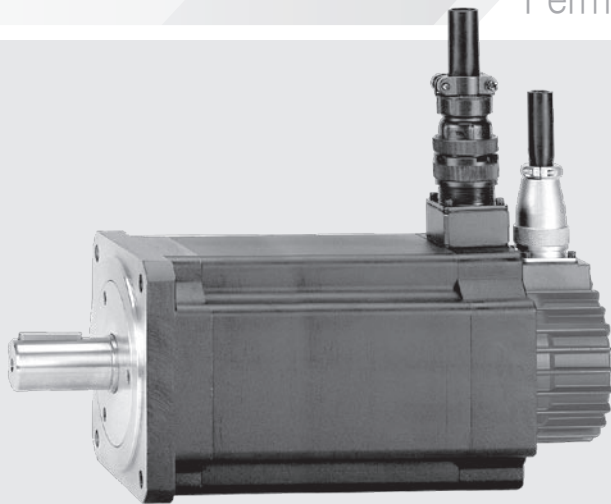
技術資料 Servo Motor Technical Datasheet:

Model		LDSM125-D			
項目		符號 Code	單位 Unit	200V	400V
額定輸出	Rated output	PR	kW	2.2	2.2
適用驅動器 (額定)	Applicable driver	Idry	A	≥ 10	≥ 5
額定轉矩	Rated torque	TR	Kgf-m	1.094	1.094
額定電流	Rated current	IR	A	9.97	4.98
額定轉速	Rated speed	NR	rpm	2000	2000
瞬間最大轉矩	Instant max. torque	TP	Kgf-m	3.282	3.282
瞬間最大電流	Instant max. current	IP	A	29.9	15
最大轉速	Max. speed	Nmax	rpm	3000	3000
轉矩常數	Torque constant	KT	N·m/A	1.08	2.15
感應電壓常數	Induction voltage constant	KE	V/k rpm	60	120
轉子慣量 (J)	Rotor inertia (J)	JM	kg/cm ²	25.72	25.72
轉子飛輪效應	Rotor flywheel effect	GD ²	kg/cm ²	102.88	102.88
重量 (標準)	Weight (Standard)	W	kg	12.5	12.5

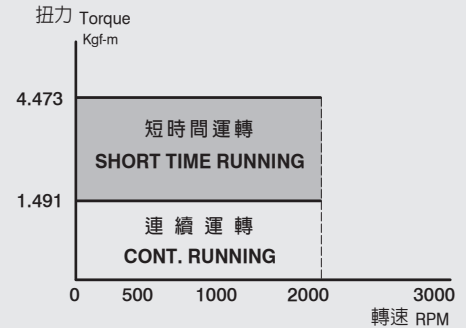
LDSM 125-E

永磁同步伺服馬達

Permanent Magnetic Synchronous Servo Motor

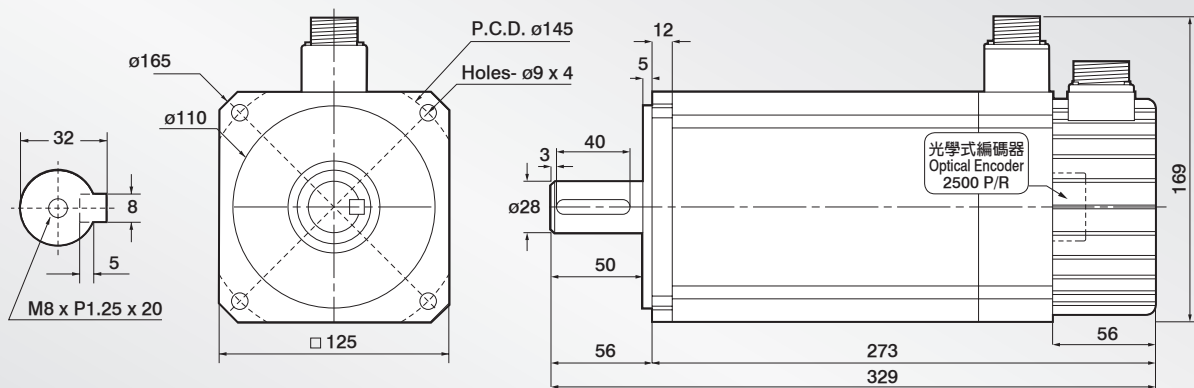


T-M 扭力轉速曲線圖
T-M Torque/Speed Diagram



外觀尺寸圖 Dimensions:

UNIT:mm



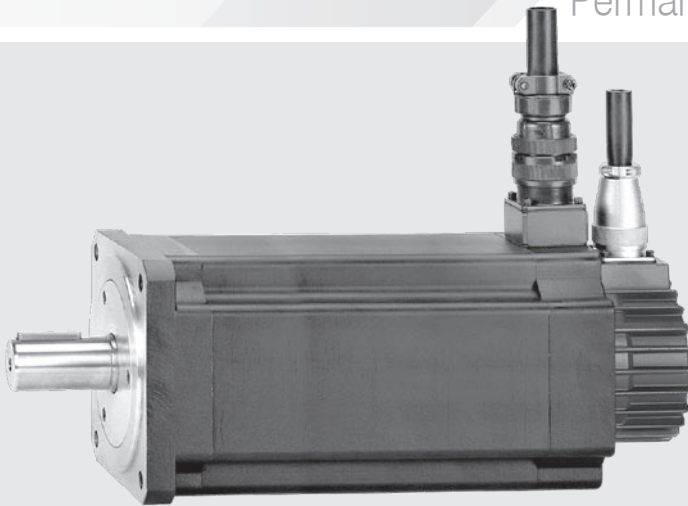
技術資料 Servo Motor Technical Datasheet:

Model		LDSM125-E			
項目		符號 Code	單位 Unit	200V	400V
額定輸出	Rated output	PR	kW	3	3
適用驅動器 (額定)	Applicable driver	Idry	A	≥ 14	≥ 7
額定轉矩	Rated torque	TR	Kgf-m	1.491	1.491
額定電流	Rated current	IR	A	13.6	6.79
額定轉速	Rated speed	NR	rpm	2000	2000
瞬間最大轉矩	Instant max. torque	TP	Kgf-m	4.473	4.473
瞬間最大電流	Instant max. current	IP	A	40.8	20.4
最大轉速	Max. speed	Nmax	rpm	3000	3000
轉矩常數	Torque constant	KT	N•m/A	1.08	2.15
感應電壓常數	Induction voltage constant	KE	V/k rpm	60	120
轉子慣量 (J)	Rotor inertia (J)	JM	kg/cm ²	34.9	34.9
轉子飛輪效應	Rotor flywheel effect	GD ²	kg/cm ²	139.6	139.6
重量 (標準)	Weight (Standard)	W	kg	16	16

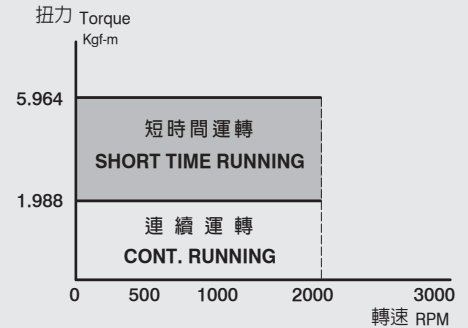
LDSM125-F

永磁同步伺服馬達

Permanent Magnetic Synchronous Servo Motor

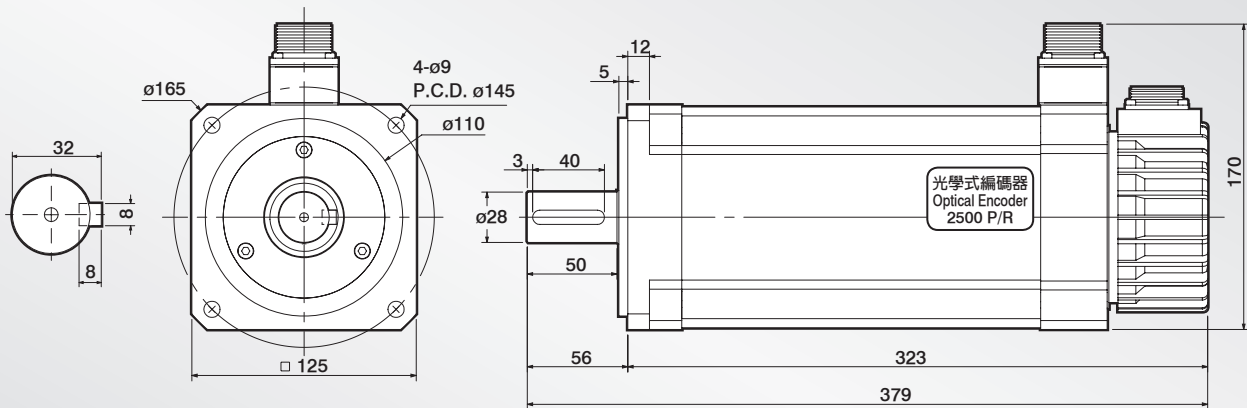


T-M 扭力轉速曲線圖
T-M Torque/Speed Diagram



外觀尺寸圖 Dimensions:

UNIT:mm

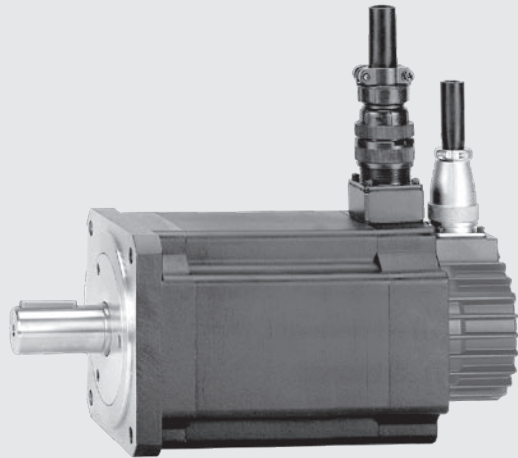


技術資料 Servo Motor Technical Datasheet:

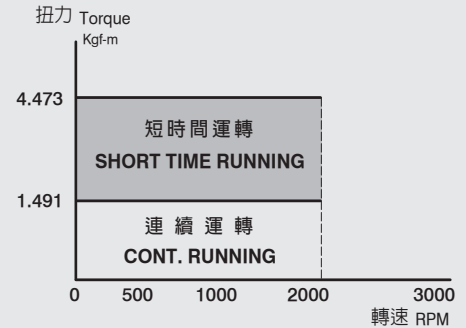
Model		LDSM125-F			
項目		符號 Code	單位 Unit	200V	400V
額定輸出	Rated output	PR	kW	4	4
適用驅動器 (額定)	Applicable driver	Idry	A	≥ 18	≥ 9
額定轉矩	Rated torque	TR	Kgf-m	1.988	1.988
額定電流	Rated current	IR	A	18.1	9.06
額定轉速	Rated speed	NR	rpm	2000	2000
瞬間最大轉矩	Instant max. torque	TP	Kgf-m	5.964	5.964
瞬間最大電流	Instant max. current	IP	A	54.3	27.2
最大轉速	Max. speed	Nmax	rpm	3000	3000
轉矩常數	Torque constant	KT	N·m/A	1.08	2.15
感應電壓常數	Induction voltage constant	KE	V/k rpm	60	120
轉子慣量 (J)	Rotor inertia (J)	JM	kg/cm ²	46.39	46.39
轉子飛輪效應	Rotor flywheel effect	GD ²	kg/cm ²	185.56	185.56
重量 (標準)	Weight (Standard)	W	kg	28	28

LDSM145-A

永磁同步伺服馬達 Permanent Magnetic Synchronous Servo Motor

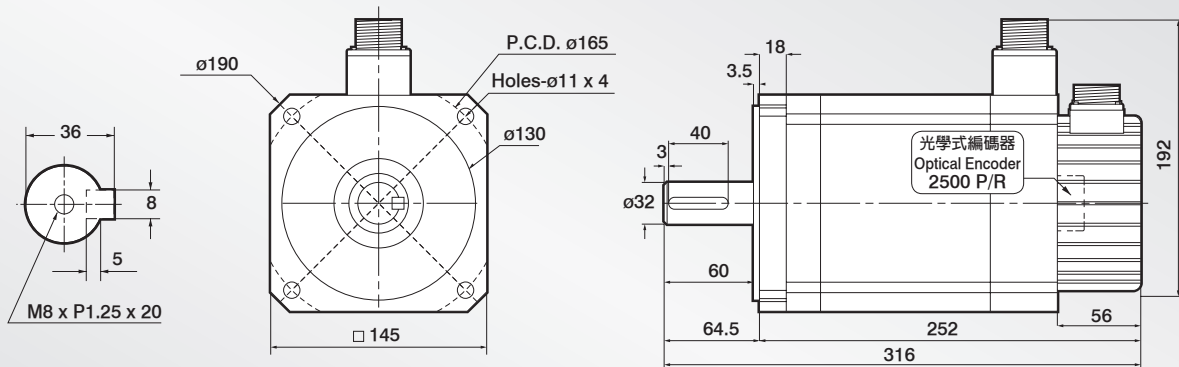


T-M 扭力轉速曲線圖
T-M Torque/Speed Diagram



外觀尺寸圖 Dimensions:

UNIT:mm



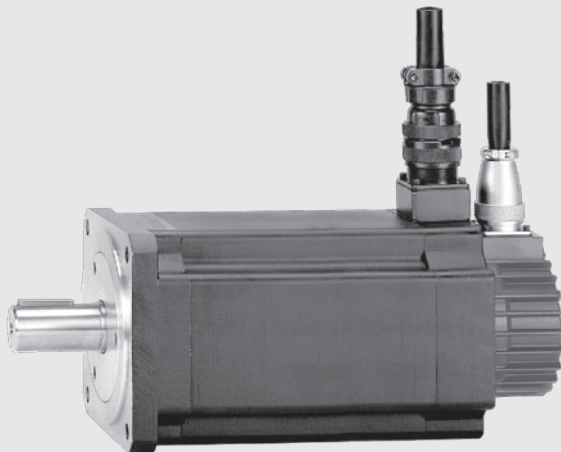
技術資料 Servo Motor Technical Datasheet:

Model		LDSM145-A			
項目		符號 Code	單位 Unit	200V	400V
額定輸出	Rated output	PR	kW	3	3
適用驅動器 (額定)	Applicable driver	Idry	A	≥ 13	≥ 7
額定轉矩	Rated torque	TR	Kgf-m	1.491	1.491
額定電流	Rated current	IR	A	13.6	6.79
額定轉速	Rated speed	NR	rpm	2000	2000
瞬間最大轉矩	Instant max. torque	TP	Kgf-m	4.473	4.473
瞬間最大電流	Instant max. current	IP	A	40.8	20.4
最大轉速	Max. speed	Nmax	rpm	3000	3000
轉矩常數	Torque constant	KT	N•m/A	1.08	2.15
感應電壓常數	Induction voltage constant	KE	V/k rpm	60	120
轉子慣量 (J)	Rotor inertia (J)	JM	kg/cm ²	73.21	73.21
轉子飛輪效應	Rotor flywheel effect	GD ²	kg/cm ²	292.84	292.84
重量 (標準)	Weight (Standard)	W	kg	18	18

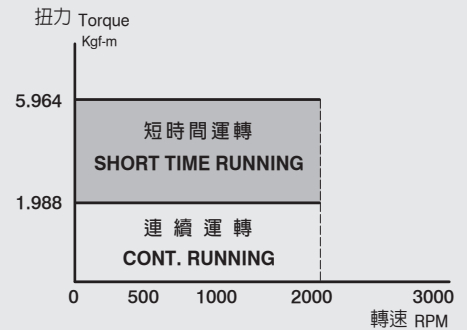
LDSM145-B

永磁同步伺服馬達

Permanent Magnetic Synchronous Servo Motor

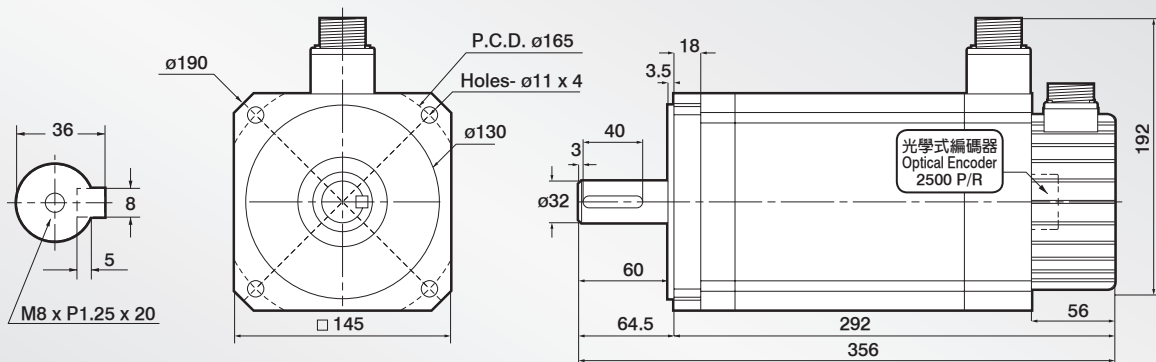


T-M 扭力轉速曲線圖
T-M Torque/Speed Diagram



外觀尺寸圖 Dimensions:

UNIT:mm



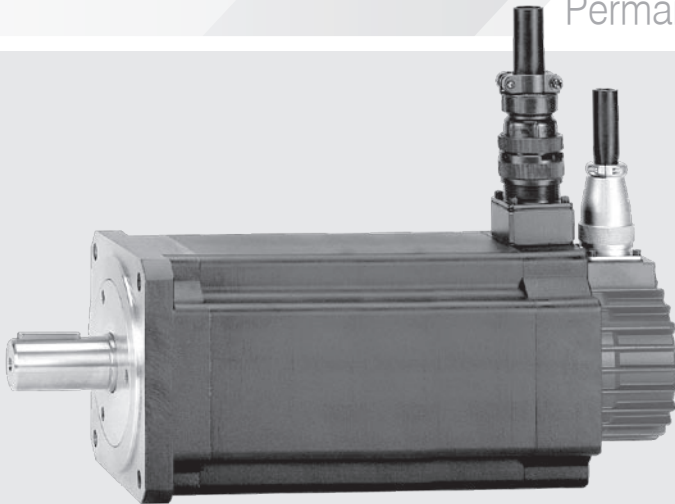
技術資料 Servo Motor Technical Datasheet:

Model		LDSM145-B			
項目		符號 Code	單位 Unit	200V	400V
額定輸出	Rated output	PR	kW	4	4
適用驅動器 (額定)	Applicable driver	Idry	A	≥ 18	≥ 9
額定轉矩	Rated torque	TR	Kgf-m	1.988	1.988
額定電流	Rated current	IR	A	18.1	9.06
額定轉速	Rated speed	NR	rpm	2000	2000
瞬間最大轉矩	Instant max. torque	TP	Kgf-m	5.964	5.964
瞬間最大電流	Instant max. current	IP	A	54.3	27.2
最大轉速	Max. speed	Nmax	rpm	3000	3000
轉矩常數	Torque constant	KT	N·m/A	1.08	2.15
感應電壓常數	Induction voltage constant	KE	V/k rpm	60	120
轉子慣量 (J)	Rotor inertia (J)	JM	kg/cm ²	97.13	97.13
轉子飛輪效應	Rotor flywheel effect	GD ²	kg/cm ²	388.52	388.52
重量 (標準)	Weight (Standard)	W	kg	25	25

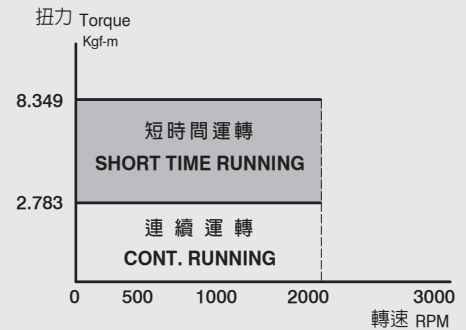
LDSM145-C

永磁同步伺服馬達

Permanent Magnetic Synchronous Servo Motor

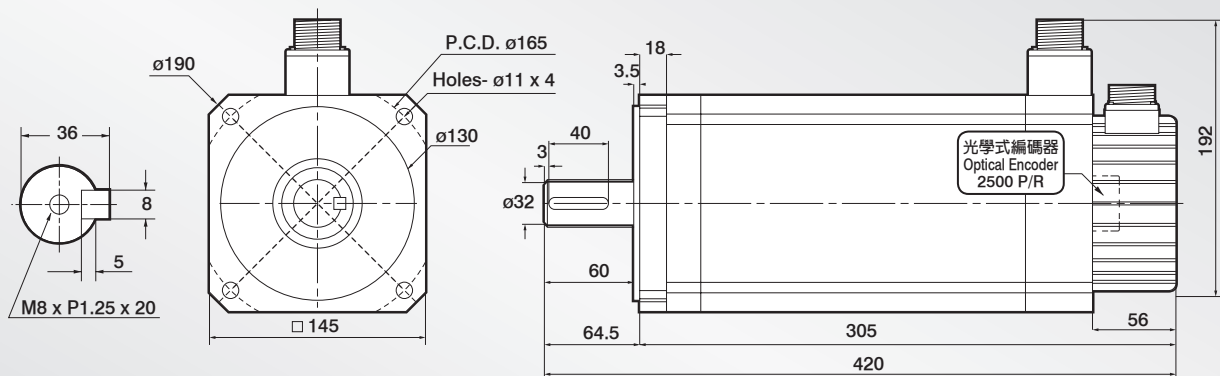


T-M 扭力轉速曲線圖
T-M Torque/Speed Diagram



外觀尺寸圖 Dimensions:

UNIT:mm



技術資料 Servo Motor Technical Datasheet:

Model		LDSM145-C			
項目		符號 Code	單位 Unit	200V	400V
額定輸出	Rated output	PR	kW	5.6	5.6
適用驅動器 (額定)	Applicable driver	Idry	A	≥ 25	≥ 13
額定轉矩	Rated torque	TR	Kgf-m	2.783	2.783
額定電流	Rated current	IR	A	25.4	12.7
額定轉速	Rated speed	NR	rpm	2000	2000
瞬間最大轉矩	Instant max. torque	TP	Kgf-m	8.349	8.349
瞬間最大電流	Instant max. current	IP	A	76.1	38
最大轉速	Max. speed	Nmax	rpm	3000	3000
轉矩常數	Torque constant	KT	N•m/A	1.08	2.15
感應電壓常數	Induction voltage constant	KE	V/k rpm	60	120
轉子慣量 (J)	Rotor inertia (J)	JM	kg/cm ²	135.39	135.39
轉子飛輪效應	Rotor flywheel effect	GD ²	kg/cm ²	541.56	541.56
重量 (標準)	Weight (Standard)	W	kg	35	35

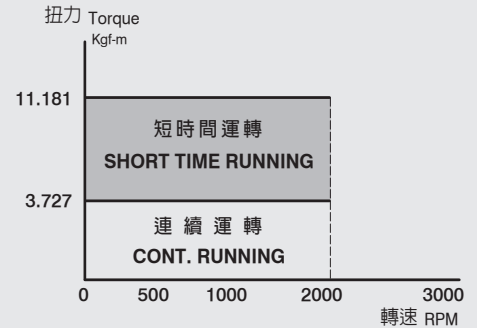
LDSM145-D

永磁同步伺服馬達

Permanent Magnetic Synchronous Servo Motor

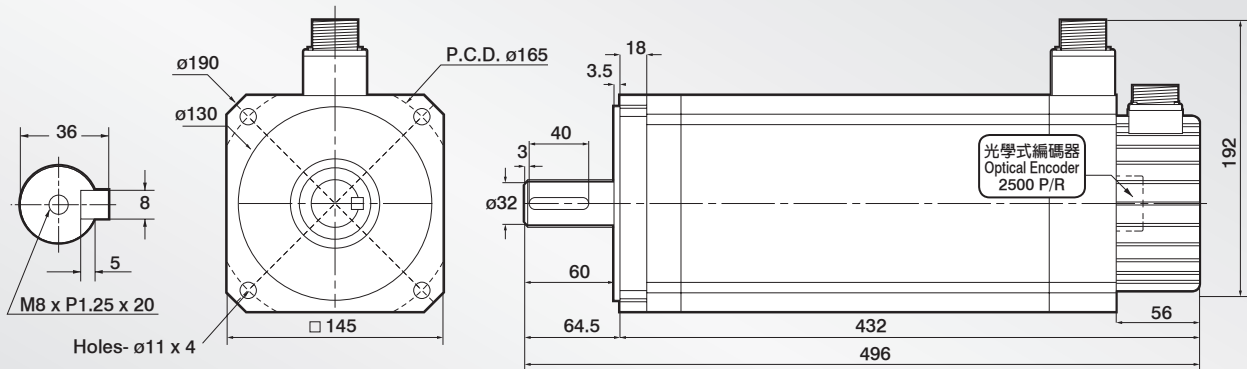


T-M 扭力轉速曲線圖
T-M Torque/Speed Diagram



外觀尺寸圖 Dimensions:

UNIT:mm

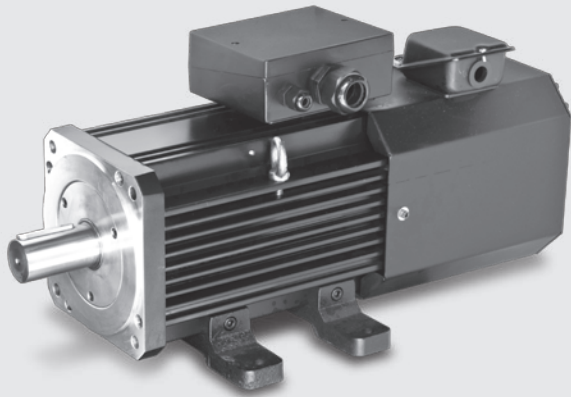


技術資料 Servo Motor Technical Datasheet:

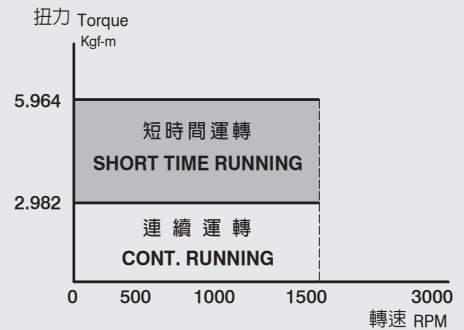
Model		LDSM145-D			
項目		符號 Code	單位 Unit	200V	400V
額定輸出	Rated output	PR	kW	7.5	7.5
適用驅動器 (額定)	Applicable driver	Idry	A	≥ 32	≥ 17
額定轉矩	Rated torque	TR	Kgf-m	3.727	3.727
額定電流	Rated current	IR	A	34	17
額定轉速	Rated speed	NR	rpm	2000	2000
瞬間最大轉矩	Instant max. torque	TP	Kgf-m	11.181	11.181
瞬間最大電流	Instant max. current	IP	A	102	50.9
最大轉速	Max. speed	Nmax	rpm	3000	3000
轉矩常數	Torque constant	KT	N•m/A	1.08	2.15
感應電壓常數	Induction voltage constant	KE	V/k rpm	60	120
轉子慣量 (J)	Rotor inertia (J)	JM	kg/cm ²	180.83	180.83
轉子飛輪效應	Rotor flywheel effect	GD ²	kg/cm ²	723.32	723.32
重量 (標準)	Weight (Standard)	W	kg	45	45

LDSM 190-A

永磁同步伺服馬達 Permanent Magnetic Synchronous Servo Motor

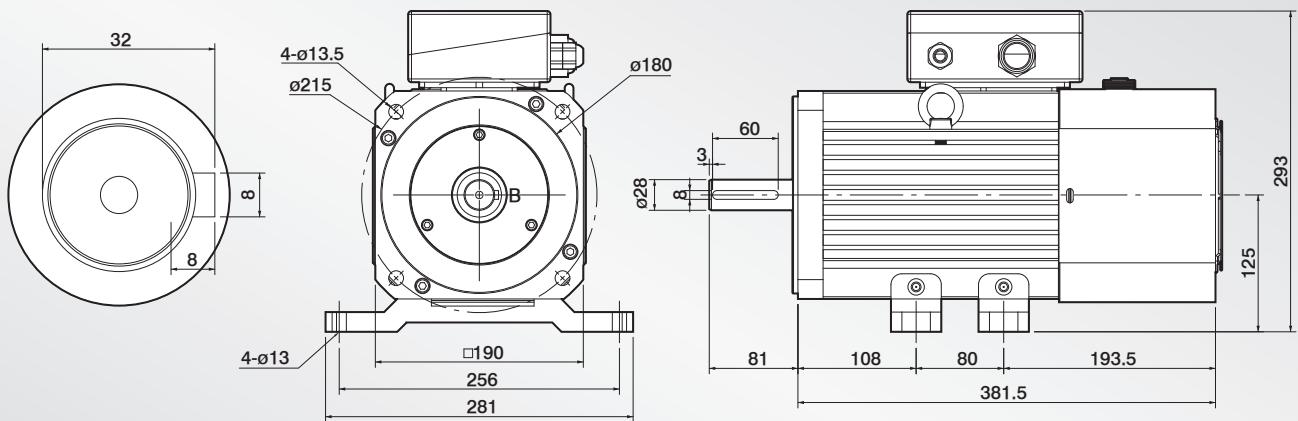


T-M 扭力轉速曲線圖
T-M Torque/Speed Diagram



外觀尺寸圖 Dimensions:

UNIT:mm



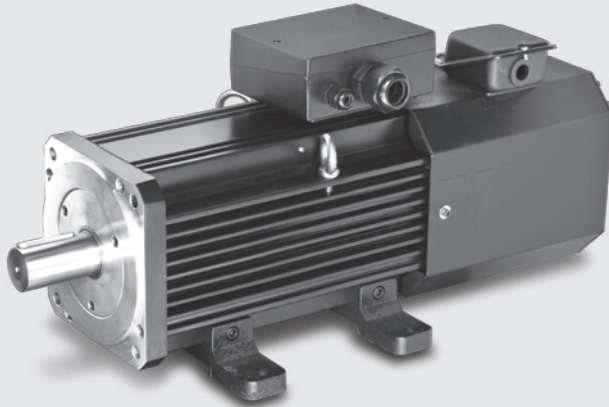
技術資料 Servo Motor Technical Datasheet:

Model		LDSM190-A			
項目		符號 Code	單位 Unit	200V	400V
額定輸出	Rated output	PR	kW	4.5	4.5
適用驅動器 (額定)	Applicable driver	Idry	A	≥ 18	≥ 9
額定轉矩	Rated torque	TR	Kgf-m	2.982	2.982
額定電流	Rated current	IR	A	17.5	8.58
額定轉速	Rated speed	NR	rpm	1500	1500
瞬間最大轉矩	Instant max. torque	TP	Kgf-m	5.964	5.964
瞬間最大電流	Instant max. current	IP	A	35.1	17.2
最大轉速	Max. speed	Nmax	rpm	2100	2100
轉矩常數	Torque constant	KT	N•m/A	1.67	3.41
感應電壓常數	Induction voltage constant	KE	V/k rpm	93	190
轉子慣量 (J)	Rotor inertia (J)	JM	kg/cm ²	87.41	87.41
轉子飛輪效應	Rotor flywheel effect	GD ²	kg/cm ²	349.64	349.64
重量 (標準)	Weight (Standard)	W	kg	38	38

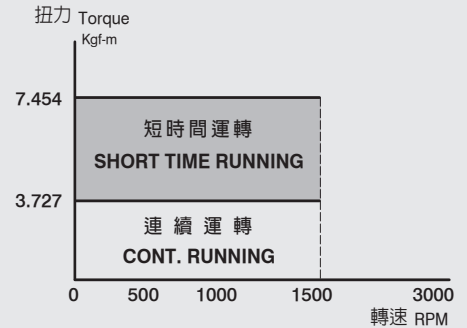
LDSM190-B

永磁同步伺服馬達

Permanent Magnetic Synchronous Servo Motor

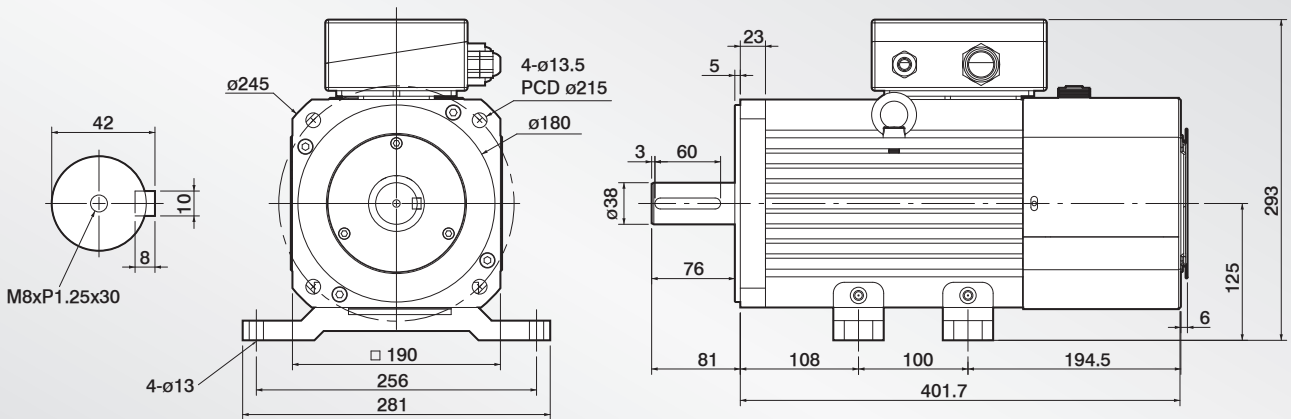


T-M 扭力轉速曲線圖
T-M Torque/Speed Diagram



外觀尺寸圖 Dimensions:

UNIT:mm

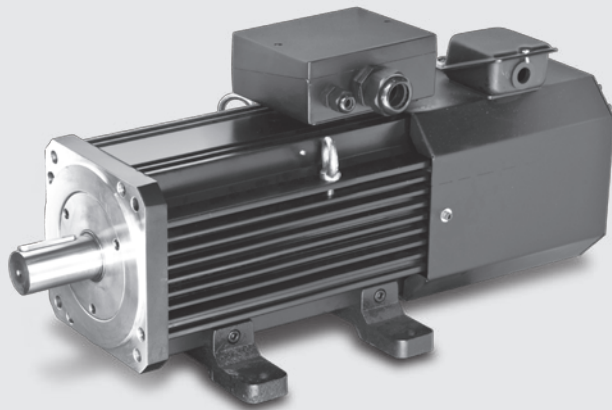


技術資料 Servo Motor Technical Datasheet:

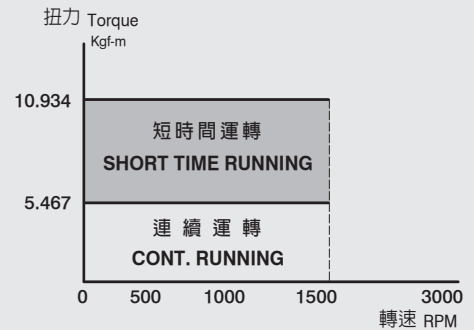
Model		LDSM190-B			
項目		符號 Code	單位 Unit	200V	400V
額定輸出	Rated output	PR	kW	5.5	5.5
適用驅動器 (額定)	Applicable driver	Idry	A	≥ 21	≥ 11
額定轉矩	Rated torque	TR	Kgf-m	3.727	3.727
額定電流	Rated current	IR	A	21.7	10.7
額定轉速	Rated speed	NR	rpm	1500	1500
瞬間最大轉矩	Instant max. torque	TP	Kgf-m	7.454	7.454
瞬間最大電流	Instant max. current	IP	A	43.5	21.4
最大轉速	Max. speed	Nmax	rpm	2100	2100
轉矩常數	Torque constant	KT	N·m/A	1.67	3.41
感應電壓常數	Induction voltage constant	KE	V/k rpm	93	190
轉子慣量 (J)	Rotor inertia (J)	JM	kg/cm ²	102.12	102.12
轉子飛輪效應	Rotor flywheel effect	GD ²	kg/cm ²	408.48	408.48
重量 (標準)	Weight (Standard)	W	kg	43	43

LDSM 190-C

永磁同步伺服馬達 Permanent Magnetic Synchronous Servo Motor

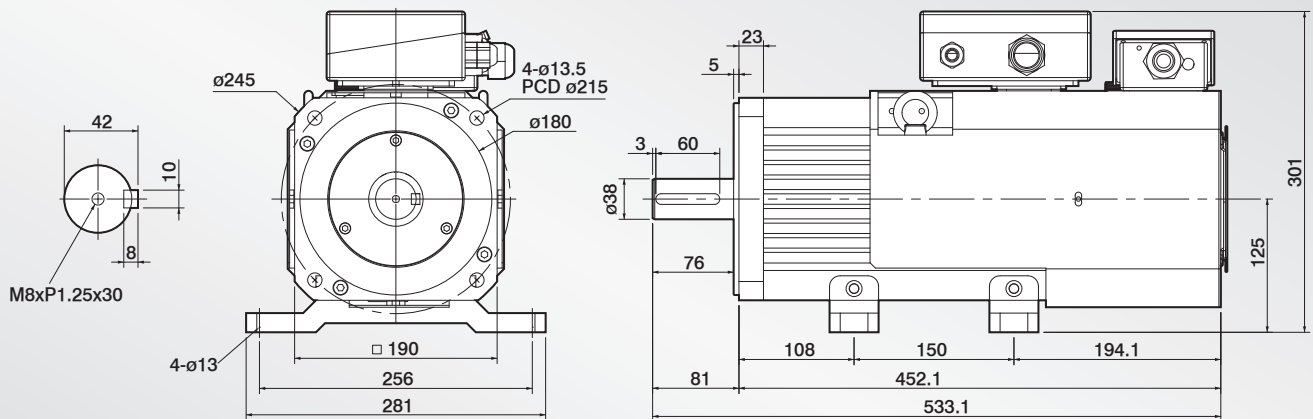


T-M 扭力轉速曲線圖
T-M Torque/Speed Diagram



外觀尺寸圖 Dimensions:

UNIT:mm



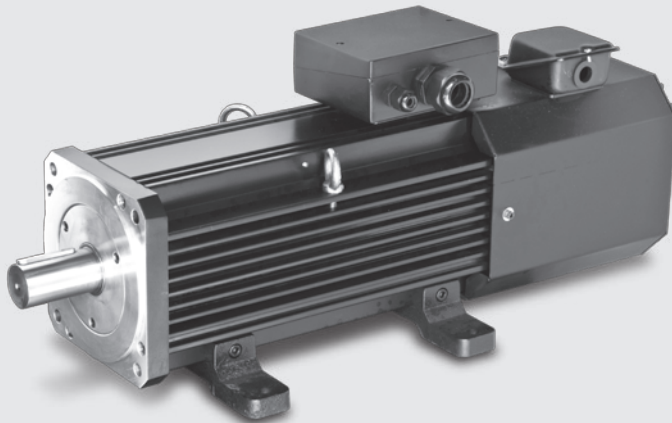
技術資料 Servo Motor Technical Datasheet:

Model		LDSM190-C			
項目		符號 Code	單位 Unit	200V	400V
額定輸出	Rated output	PR	kW	8.2	8.2
適用驅動器 (額定)	Applicable driver	Idry	A	≥ 32	≥ 16
額定轉矩	Rated torque	TR	Kgf-m	5.467	5.467
額定電流	Rated current	IR	A	32.1	15.7
額定轉速	Rated speed	NR	rpm	1500	1500
瞬間最大轉矩	Instant max. torque	TP	Kgf-m	10.934	10.934
瞬間最大電流	Instant max. current	IP	A	64.3	31.5
最大轉速	Max. speed	Nmax	rpm	2100	2100
轉矩常數	Torque constant	KT	N•m/A	1.67	3.41
感應電壓常數	Induction voltage constant	KE	V/k rpm	93	190
轉子慣量 (J)	Rotor inertia (J)	JM	kg/cm ²	138.9	138.9
轉子飛輪效應	Rotor flywheel effect	GD ²	kg/cm ²	555.6	555.6
重量 (標準)	Weight (Standard)	W	kg	53	53

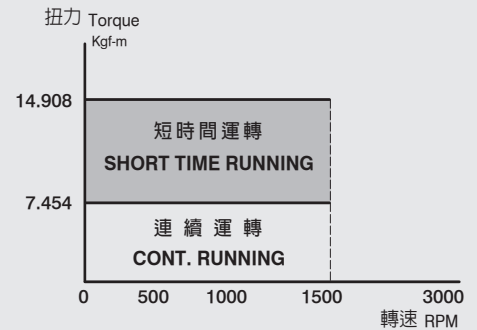
LDSM190-D

永磁同步伺服馬達

Permanent Magnetic Synchronous Servo Motor

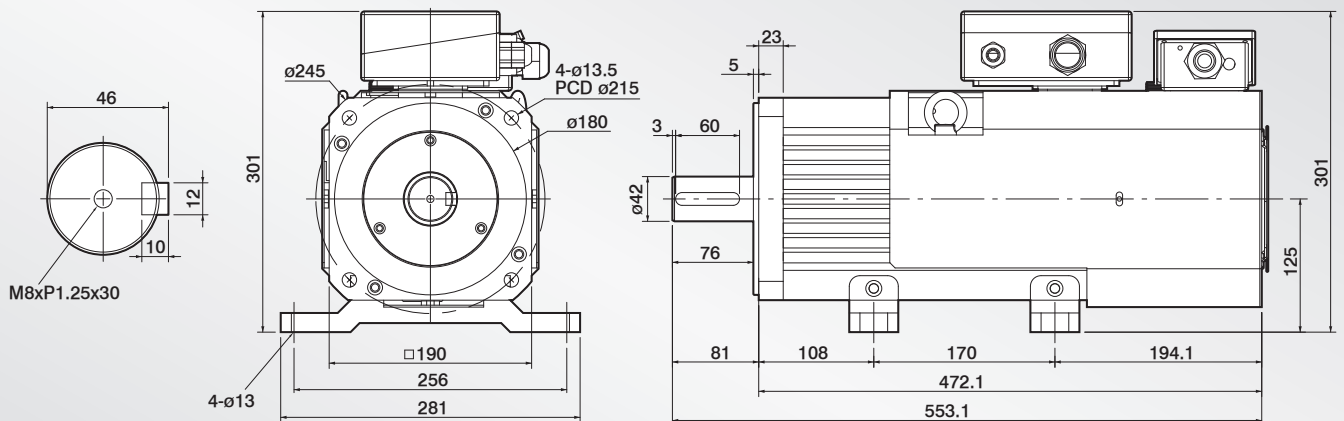


T-M 扭力轉速曲線圖
T-M Torque/Speed Diagram



外觀尺寸圖 Dimensions:

UNIT:mm



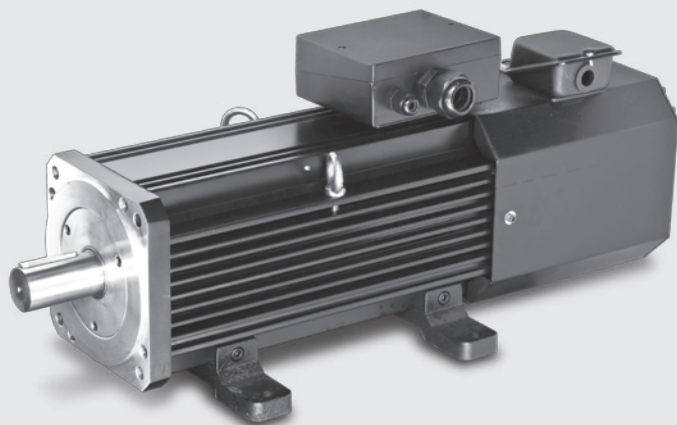
技術資料 Servo Motor Technical Datasheet:

Model		LDSM190-D			
項目		符號 Code	單位 Unit	200V	400V
額定輸出	Rated output	PR	kW	11.2	11.2
適用驅動器 (額定)	Applicable driver	Idry	A	≥ 85	≥ 43
額定轉矩	Rated torque	TR	Kgf-m	7.454	7.454
額定電流	Rated current	IR	A	43.8	21.4
額定轉速	Rated speed	NR	rpm	1500	1500
瞬間最大轉矩	Instant max. torque	TP	Kgf-m	14.908	14.908
瞬間最大電流	Instant max. current	IP	A	87.6	42.9
最大轉速	Max. speed	Nmax	rpm	2100	2100
轉矩常數	Torque constant	KT	N·m/A	1.67	3.41
感應電壓常數	Induction voltage constant	KE	V/k rpm	93	190
轉子慣量 (J)	Rotor inertia (J)	JM	kg/cm ²	153.61	153.61
轉子飛輪效應	Rotor flywheel effect	GD ²	kg/cm ²	614.44	614.44
重量 (標準)	Weight (Standard)	W	kg	57	57

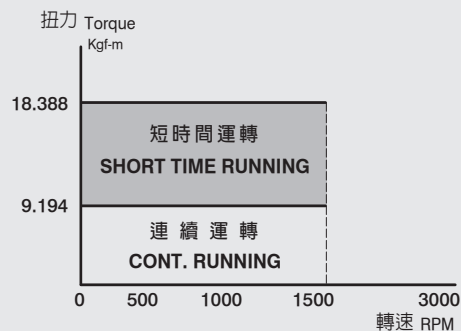
LDSM 190-K

永磁同步伺服馬達

Permanent Magnetic Synchronous Servo Motor

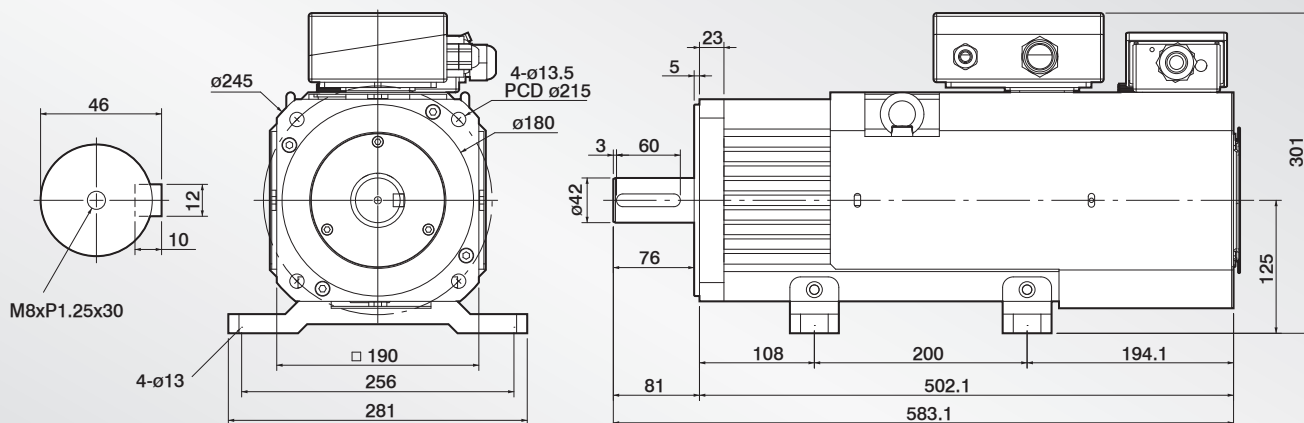


T-M 扭力轉速曲線圖
T-M Torque/Speed Diagram



外觀尺寸圖 Dimensions:

UNIT:mm



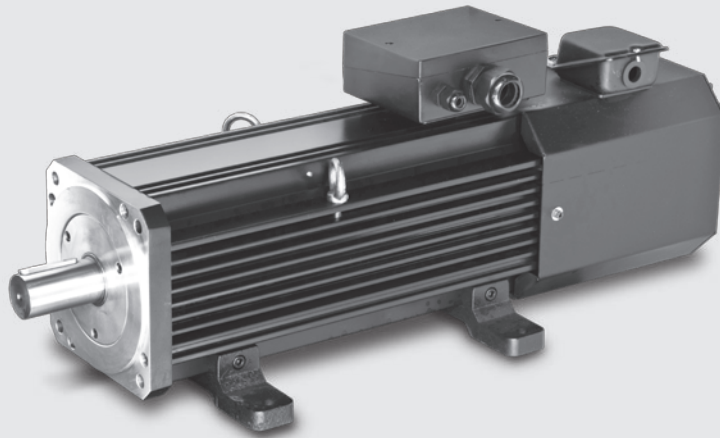
技術資料 Servo Motor Technical Datasheet:

Model		LDSM190-K			
項目		符號 Code	單位 Unit	200V	400V
額定輸出	Rated output	PR	kW	13.9	13.9
適用驅動器 (額定)	Applicable driver	Idry	A	≥ 53	≥ 27
額定轉矩	Rated torque	TR	Kgf-m	9.194	9.194
額定電流	Rated current	IR	A	54.1	26.5
額定轉速	Rated speed	NR	rpm	1500	1500
瞬間最大轉矩	Instant max. torque	TP	Kgf-m	18.388	18.388
瞬間最大電流	Instant max. current	IP	A	108	52.9
最大轉速	Max. speed	Nmax	rpm	2100	2100
轉矩常數	Torque constant	KT	N•m/A	1.67	3.41
感應電壓常數	Induction voltage constant	KE	V/k rpm	93	190
轉子慣量 (J)	Rotor inertia (J)	JM	kg/cm ²	175.68	175.68
轉子飛輪效應	Rotor flywheel effect	GD ²	kg/cm ²	702.72	702.72
重量 (標準)	Weight (Standard)	W	kg	60	60

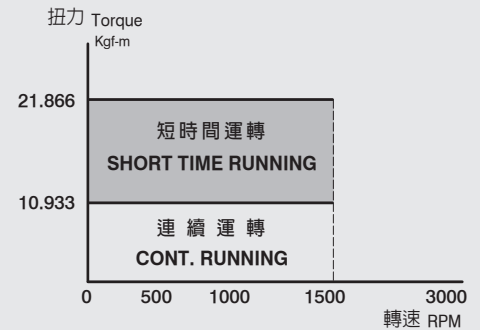
LDSM190-E

永磁同步伺服馬達

Permanent Magnetic Synchronous Servo Motor

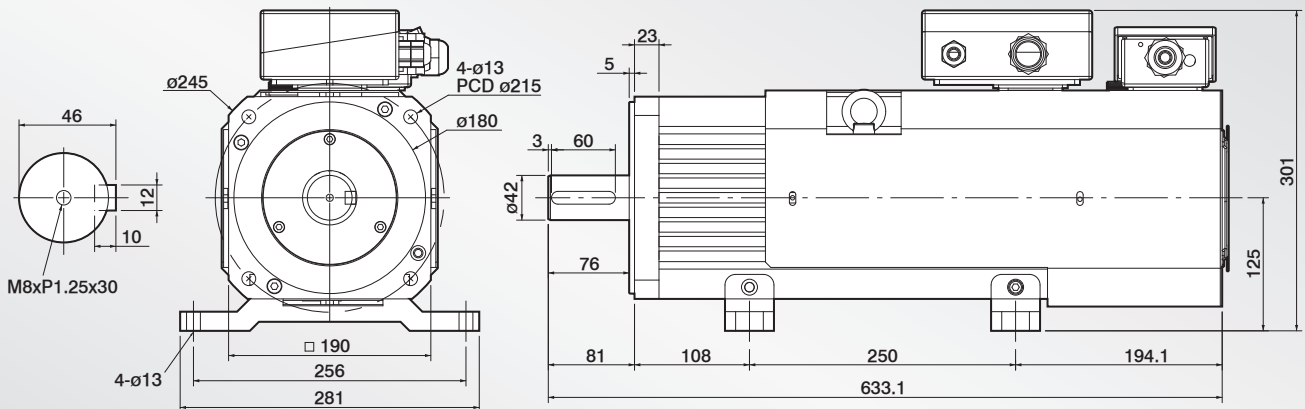


T-M 扭力轉速曲線圖
T-M Torque/Speed Diagram



外觀尺寸圖 Dimensions:

UNIT:mm



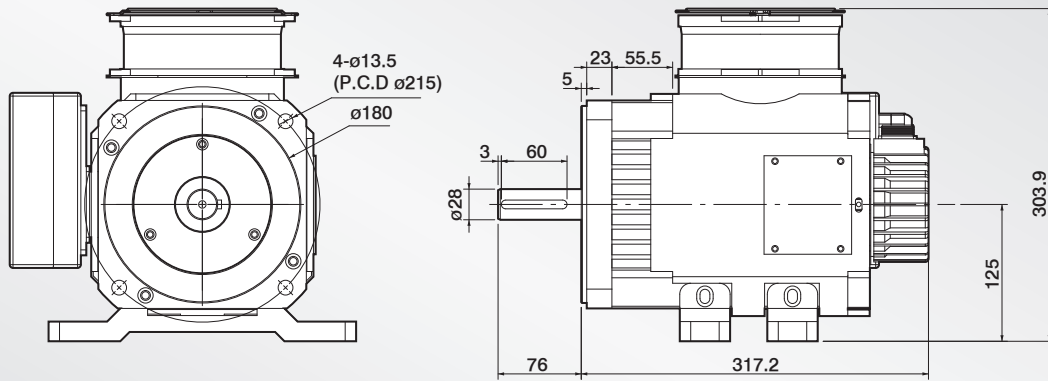
技術資料 Servo Motor Technical Datasheet:

Model		LDSM190-E			
項目		符號 Code	單位 Unit	200V	400V
額定輸出	Rated output	PR	kW	16.5	16.5
適用驅動器 (額定)	Applicable driver	Idry	A	≥ 63	≥ 32
額定轉矩	Rated torque	TR	Kgf-m	10.933	10.933
額定電流	Rated current	IR	A	64.3	31.5
額定轉速	Rated speed	NR	rpm	1500	1500
瞬間最大轉矩	Instant max. torque	TP	Kgf-m	21.866	21.866
瞬間最大電流	Instant max. current	IP	A	129	62.9
最大轉速	Max. speed	Nmax	rpm	2100	2100
轉矩常數	Torque constant	KT	N·m/A	1.67	3.41
感應電壓常數	Induction voltage constant	KE	V/k rpm	93	190
轉子慣量 (J)	Rotor inertia (J)	JM	kg/cm ²	212.46	212.46
轉子飛輪效應	Rotor flywheel effect	GD ²	kg/cm ²	849.84	849.84
重量 (標準)	Weight (Standard)	W	kg	67	67

LDFM 190-A 上風罩

外觀尺寸圖 Dimensions:

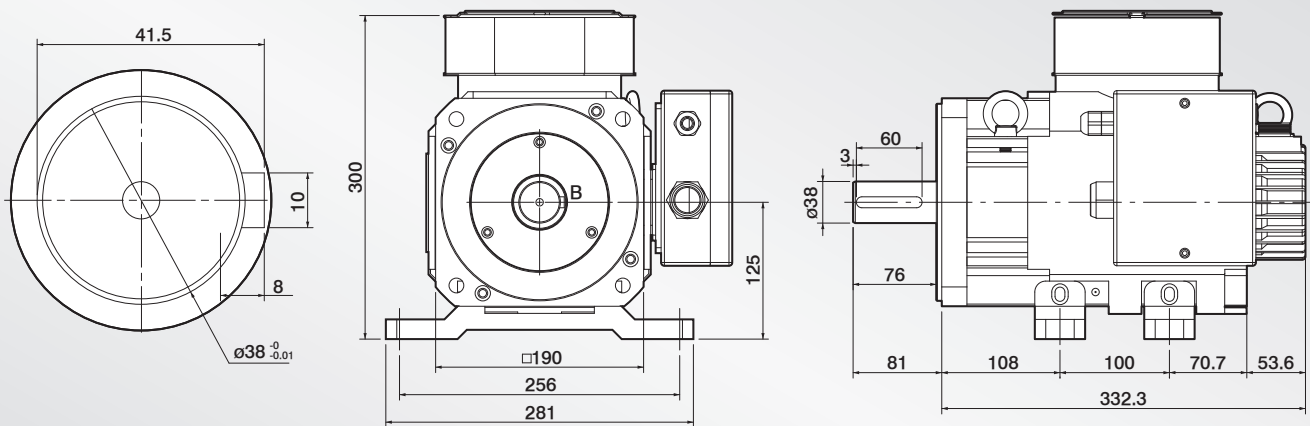
UNIT:mm



LDFM 190-B 上風罩

外觀尺寸圖 Dimensions:

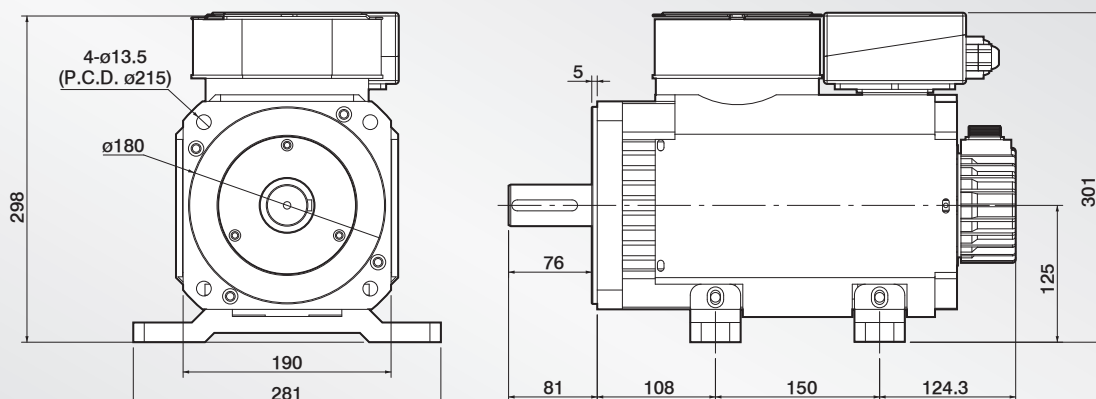
UNIT:mm



LDFM 190-C 上風罩

外觀尺寸圖 Dimensions:

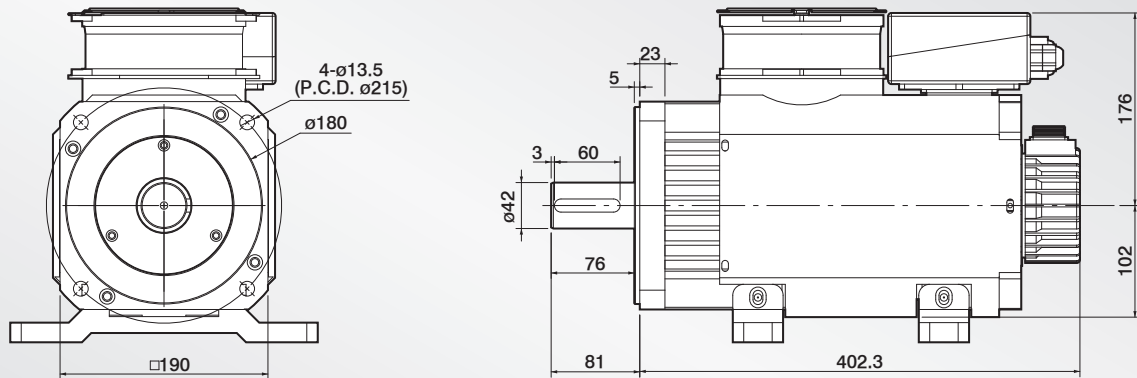
UNIT:mm



LDFM 190-D 上風罩

外觀尺寸圖 Dimensions:

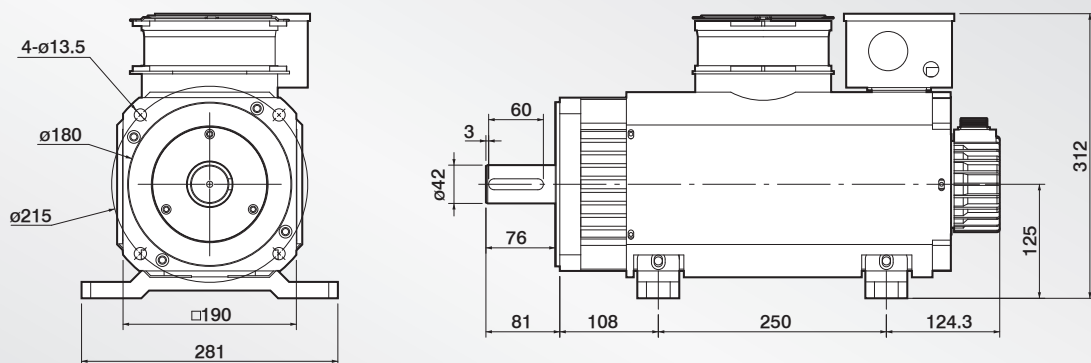
UNIT:mm



LDFM 190-E 上風罩

外觀尺寸圖 Dimensions:

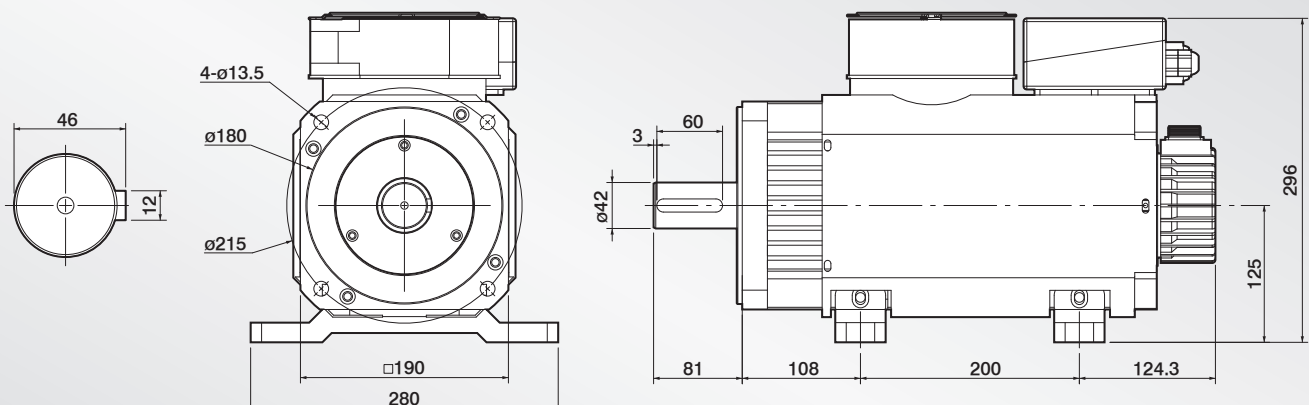
UNIT:mm



LDFM 190-K 上風罩

外觀尺寸圖 Dimensions:

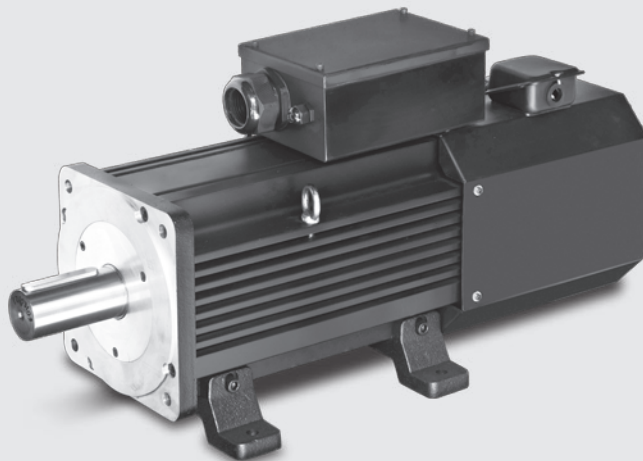
UNIT:mm



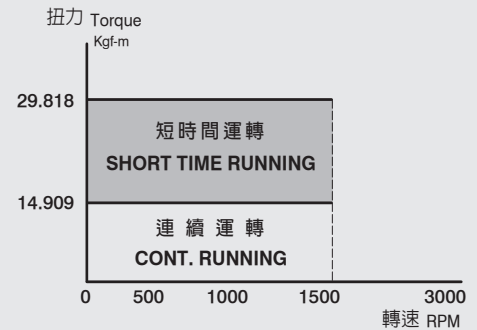
LDSM230-E

永磁同步伺服馬達

Permanent Magnetic Synchronous Servo Motor

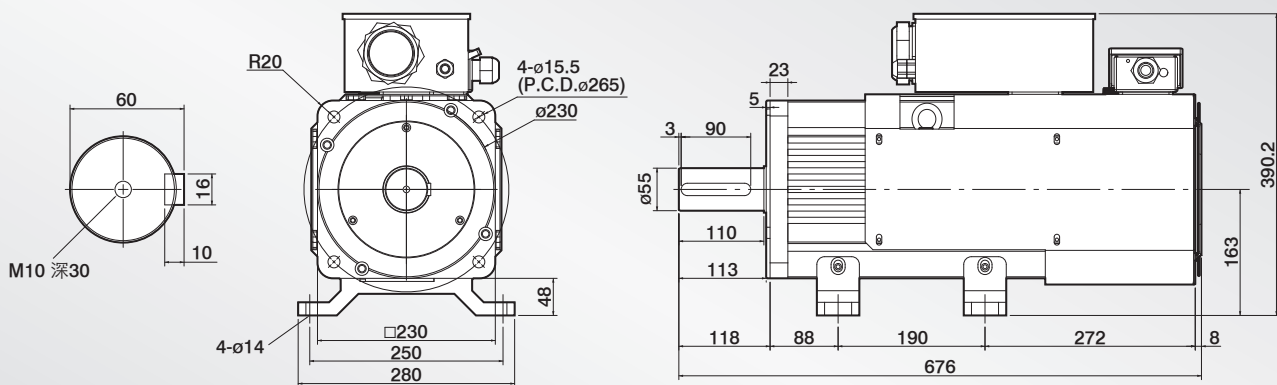


T-M 扭力轉速曲線圖
T-M Torque/Speed Diagram



外觀尺寸圖 Dimensions:

UNIT:mm



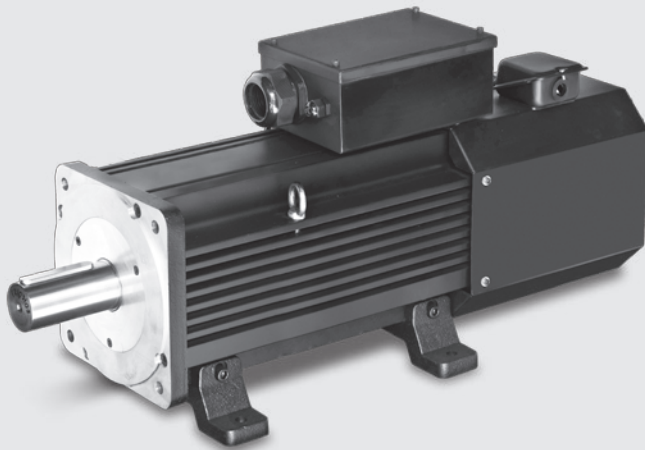
技術資料 Servo Motor Technical Datasheet:

Model		LDSM230-E			
項目		符號 Code	單位 Unit	200V	400V
額定輸出	Rated output	PR	kW	22.4	22.4
適用驅動器 (額定)	Applicable driver	Idry	A	≥ 86	≥ 43
額定轉矩	Rated torque	TR	Kgf-m	14.909	14.909
額定電流	Rated current	IR	A	87.7	42.9
額定轉速	Rated speed	NR	rpm	1500	1500
瞬間最大轉矩	Instant max. torque	TP	Kgf-m	29.818	29.818
瞬間最大電流	Instant max. current	IP	A	175	85.8
最大轉速	Max. speed	Nmax	rpm	2100	2100
轉矩常數	Torque constant	KT	N•m/A	1.67	3.41
感應電壓常數	Induction voltage constant	KE	V/k rpm	93	190
轉子慣量 (J)	Rotor inertia (J)	JM	kg/cm ²	348.1	348.1
轉子飛輪效應	Rotor flywheel effect	GD ²	kg/cm ²	1392.4	1392.4
重量 (標準)	Weight (Standard)	W	kg	90	90

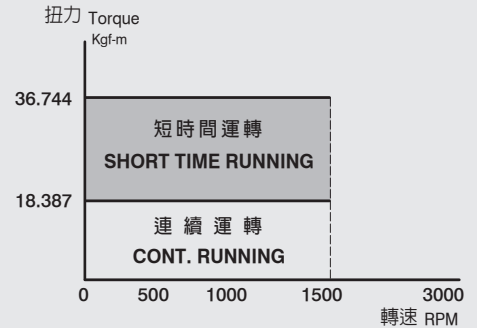
LDSM230-F

永磁同步伺服馬達

Permanent Magnetic Synchronous Servo Motor

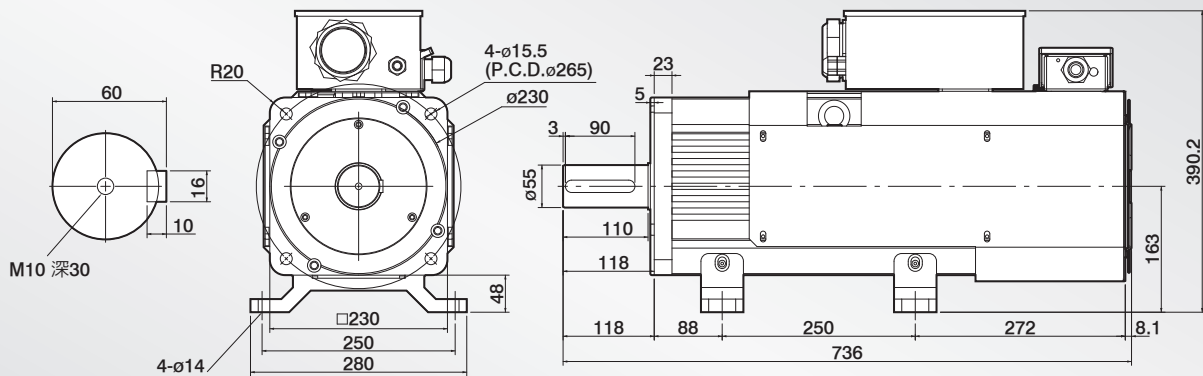


T-M 扭力轉速曲線圖
T-M Torque/Speed Diagram



外觀尺寸圖 Dimensions:

UNIT:mm



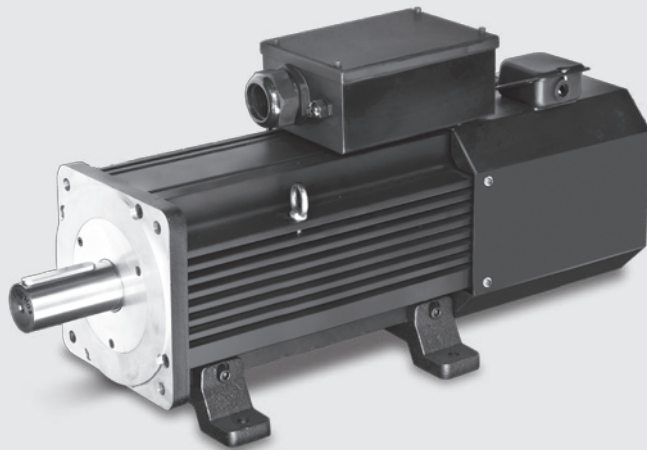
技術資料 Servo Motor Technical Datasheet:

Model		LDSM230-F			
項目		符號 Code	單位 Unit	200V	400V
額定輸出	Rated output	PR	kW	27.7	27.7
適用驅動器 (額定)	Applicable driver	Idry	A	≥ 106	≥ 53
額定轉矩	Rated torque	TR	Kgf-m	18.387	18.387
額定電流	Rated current	IR	A	108	52.9
額定轉速	Rated speed	NR	rpm	1500	1500
瞬間最大轉矩	Instant max. torque	TP	Kgf-m	36.744	36.744
瞬間最大電流	Instant max. current	IP	A	216	106
最大轉速	Max. speed	Nmax	rpm	2100	2100
轉矩常數	Torque constant	KT	N·m/A	1.67	3.41
感應電壓常數	Induction voltage constant	KE	V/k rpm	93	190
轉子慣量 (J)	Rotor inertia (J)	JM	kg/cm ²	437.2	437.2
轉子飛輪效應	Rotor flywheel effect	GD ²	kg/cm ²	1748.8	1748.8
重量 (標準)	Weight (Standard)	W	kg	104	104

LDSM230-G

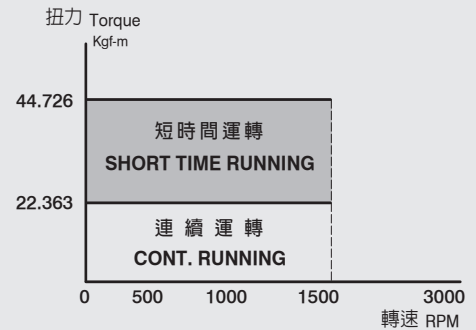
永磁同步伺服馬達

Permanent Magnetic Synchronous Servo Motor



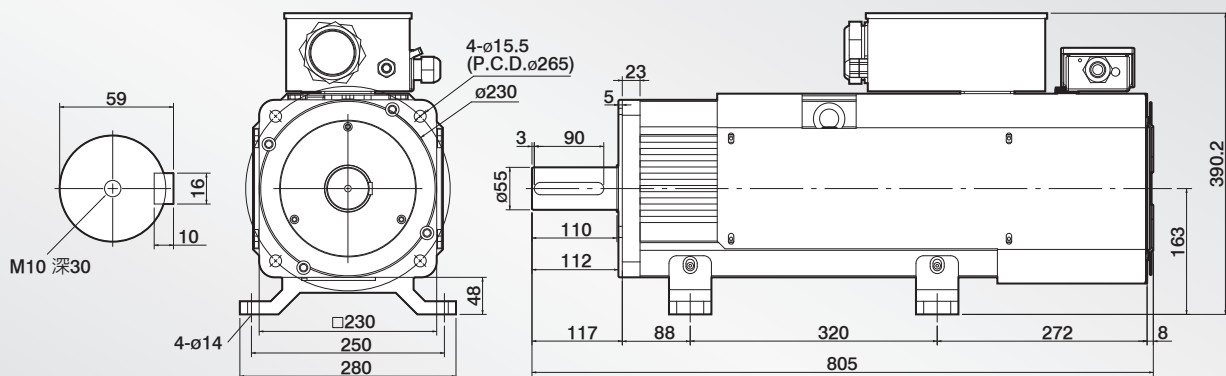
T-M 扭力轉速曲線圖

T-M Torque/Speed Diagram



外觀尺寸圖 Dimensions:

UNIT:mm



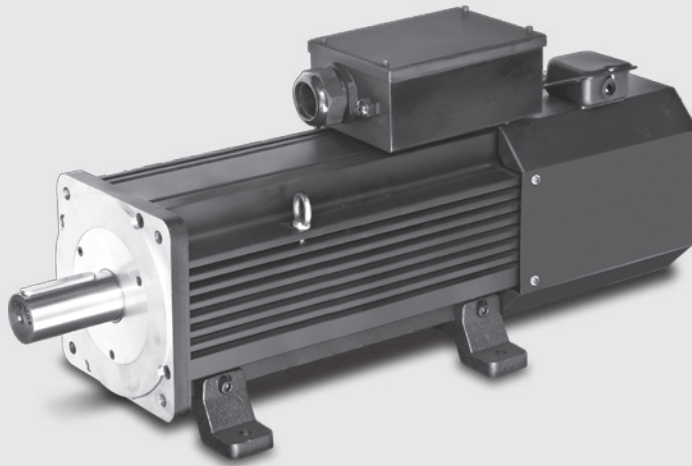
技術資料 Servo Motor Technical Datasheet:

Model		LDSM230-G			
項目		符號 Code	單位 Unit	200V	400V
額定輸出	Rated output	PR	kW	33.7	33.7
適用驅動器 (額定)	Applicable driver	ldry	A	≥ 84	≥ 42
額定轉矩	Rated torque	TR	Kgf-m	22.363	22.363
額定電流	Rated current	IR	A	131	64.4
額定轉速	Rated speed	NR	rpm	1500	1500
瞬間最大轉矩	Instant max. torque	TP	Kgf-m	44.726	44.726
瞬間最大電流	Instant max. current	IP	A	263	129
最大轉速	Max. speed	Nmax	rpm	2100	2100
轉矩常數	Torque constant	KT	N•m/A	1.67	3.41
感應電壓常數	Induction voltage constant	KE	V/k rpm	93	190
轉子慣量 (J)	Rotor inertia (J)	JM	kg/cm ²	541.1	541.1
轉子飛輪效應	Rotor flywheel effect	GD ²	kg/cm ²	2164.4	2164.4
重量 (標準)	Weight (Standard)	W	kg	120	120

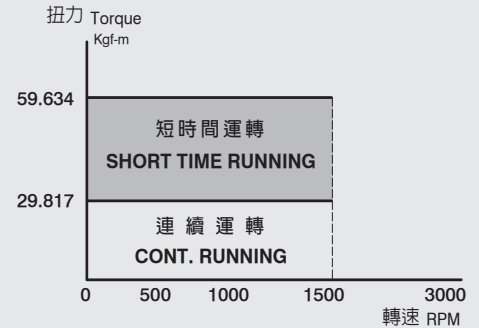
LDSM230-H

永磁同步伺服馬達

Permanent Magnetic Synchronous Servo Motor

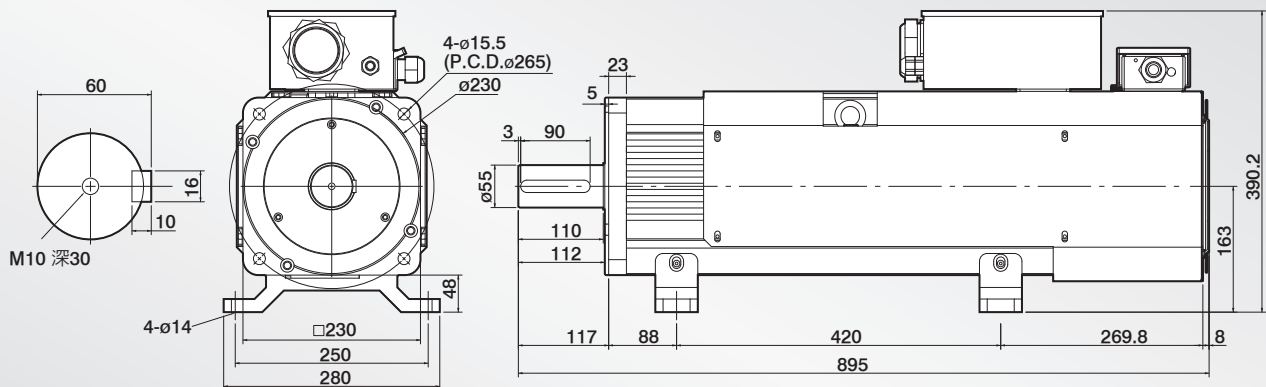


T-M 扭力轉速曲線圖
T-M Torque/Speed Diagram



外觀尺寸圖 Dimensions:

UNIT:mm



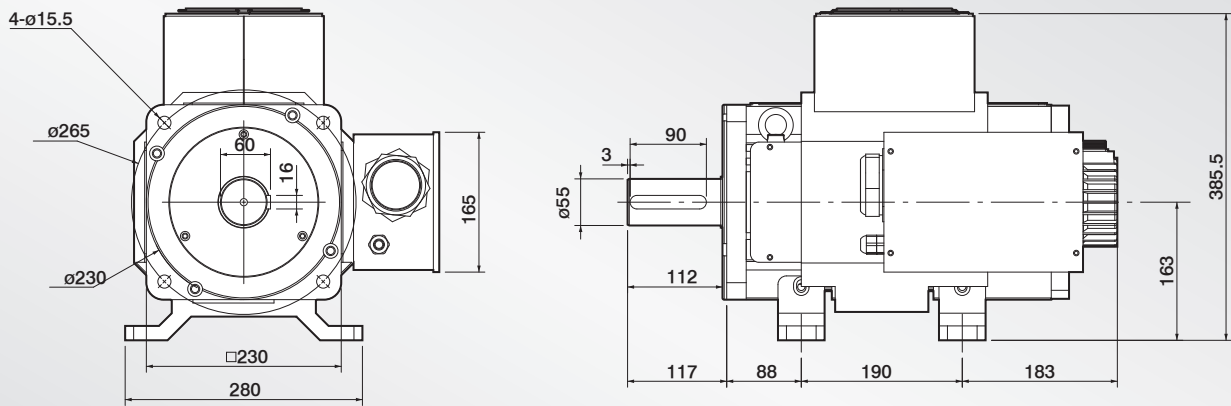
技術資料 Servo Motor Technical Datasheet:

Model		LDSM230-H			
項目		符號 Code	單位 Unit	200V	400V
額定輸出	Rated output	PR	kW	45	45
適用驅動器 (額定)	Applicable driver	Idry	A	≥ 170	≥ 85
額定轉矩	Rated torque	TR	Kgf-m	29.817	29.817
額定電流	Rated current	IR	A	175	85.8
額定轉速	Rated speed	NR	rpm	1500	1500
瞬間最大轉矩	Instant max. torque	TP	Kgf-m	59.634	59.634
瞬間最大電流	Instant max. current	IP	A	351	172
最大轉速	Max. speed	Nmax	rpm	2100	2100
轉矩常數	Torque constant	KT	N·m/A	1.67	3.41
感應電壓常數	Induction voltage constant	KE	V/k rpm	93	190
轉子慣量 (J)	Rotor inertia (J)	JM	kg/cm ²	674.7	674.7
轉子飛輪效應	Rotor flywheel effect	GD ²	kg/cm ²	2698.8	2698.8
重量 (標準)	Weight (Standard)	W	kg	140	140

LDFM 230-E 上風罩

外觀尺寸圖 Dimensions:

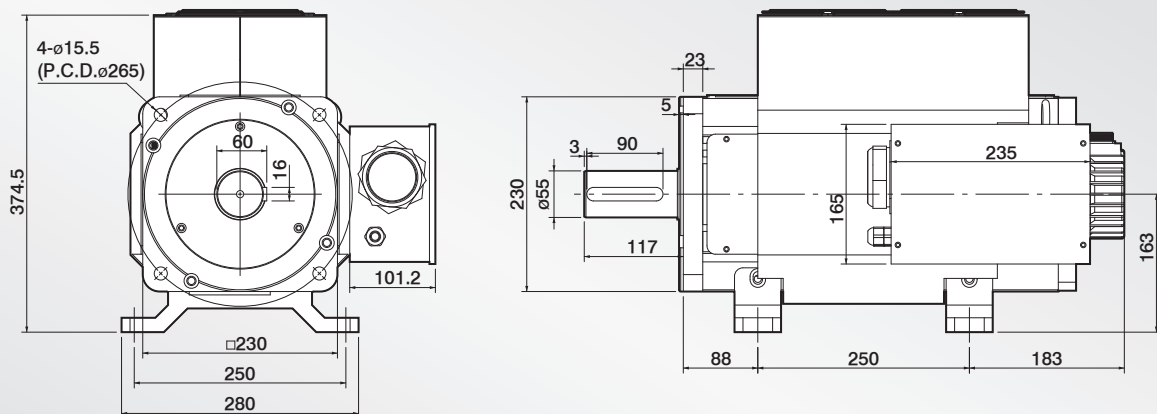
UNIT:mm



LDFM 230-F 上風罩

外觀尺寸圖 Dimensions:

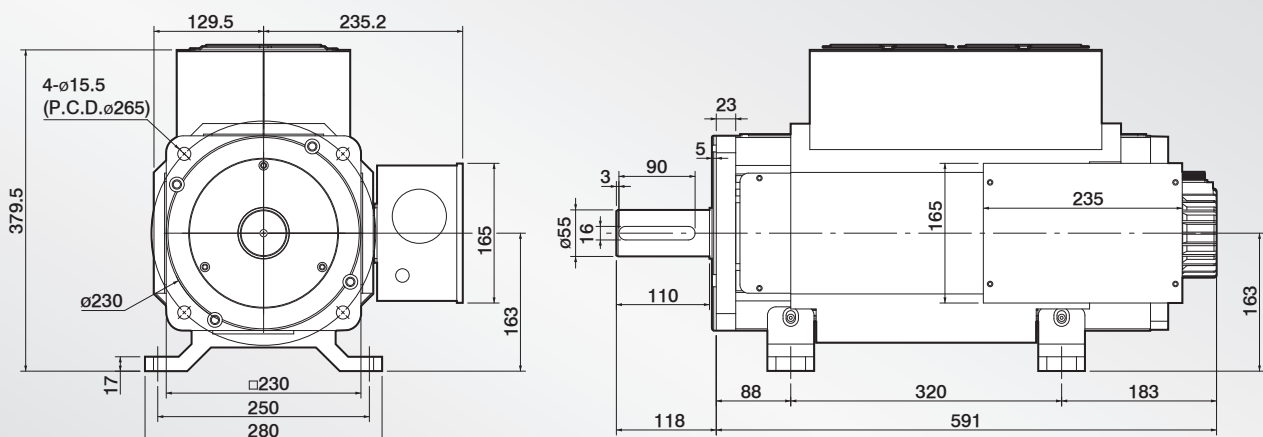
UNIT:mm



LDFM 230-G 上風罩

外觀尺寸圖 Dimensions:

UNIT:mm



LDFM 230-H 上風罩

外觀尺寸圖 Dimensions:

UNIT:mm

