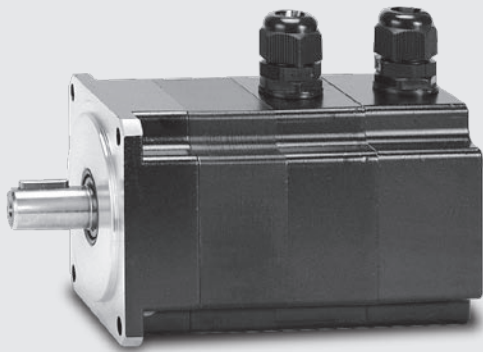
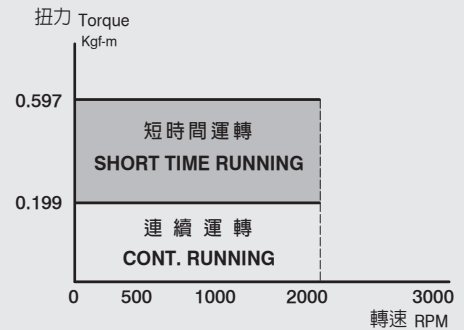


LDSM85-AS

永磁同步伺服馬達 Permanent Magnetic Synchronous Servo Motor

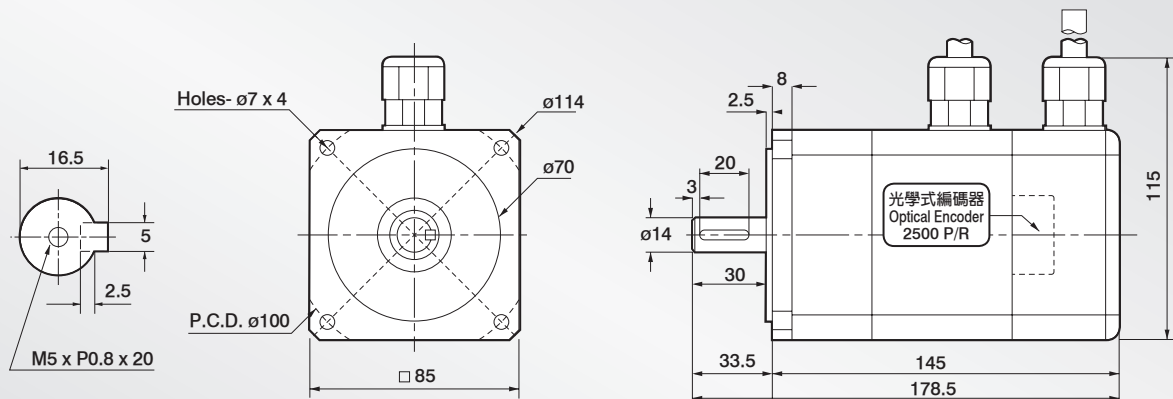


T-M 扭力轉速曲線圖
T-M Torque/Speed Diagram



外觀尺寸圖 Dimensions:

UNIT:mm



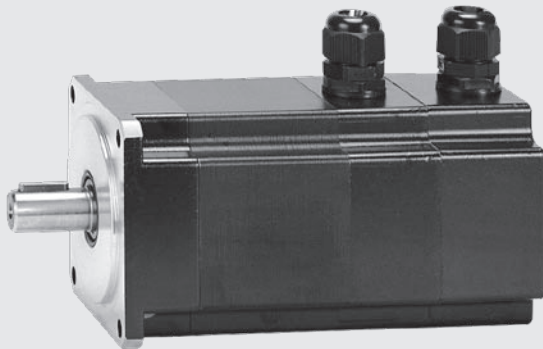
技術資料 Servo Motor Technical Datasheet:

Model		LDSM85-AS		
項目		符號 Code	單位 Unit	200V
額定輸出	Rated output	PR	kW	0.4
適用驅動器 (額定)	Applicable driver	ldry	A	≥ 5
額定轉矩	Rated torque	TR	Kgf-m	0.199
額定電流	Rated current	IR	A	2.42
額定轉速	Rated speed	NR	rpm	2000
瞬間最大轉矩	Instant max. torque	TP	Kgf-m	0.597
瞬間最大電流	Instant max. current	IP	A	7.25
最大轉速	Max. speed	Nmax	rpm	3000
轉矩常數	Torque constant	KT	N•m/A	0.81
感應電壓常數	Induction voltage constant	KE	V/k rpm	45
轉子慣量 (J)	Rotor inertia (J)	JM	kg/cm ²	1.86
轉子飛輪效應	Rotor flywheel effect	GD ²	kg/cm ²	7.44
重量 (標準)	Weight (Standard)	W	kg	3

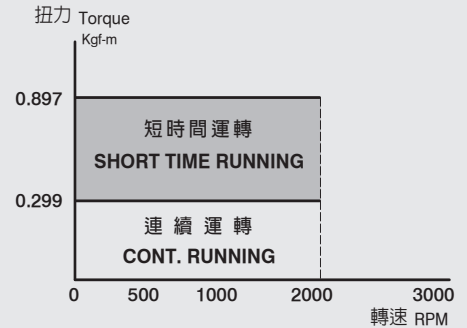
LDSM85-BS

永磁同步伺服馬達

Permanent Magnetic Synchronous Servo Motor

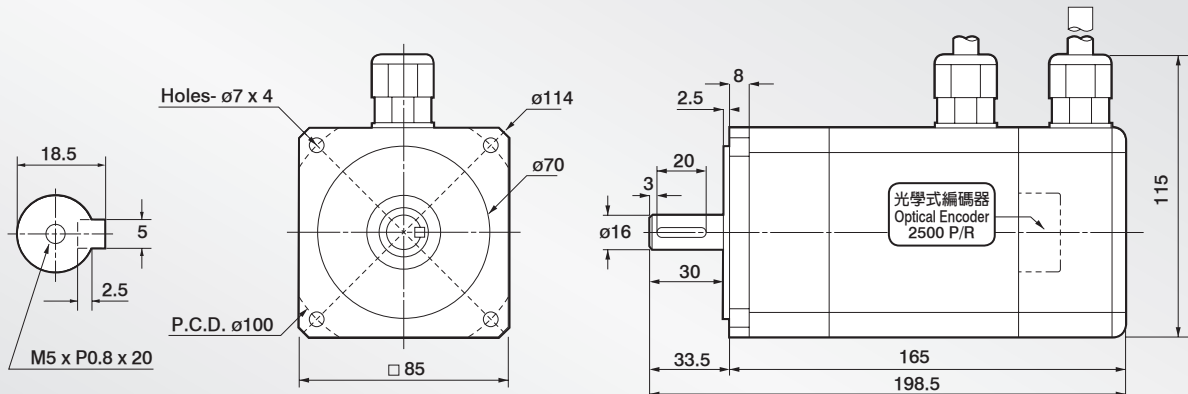


T-M 扭力轉速曲線圖
T-M Torque/Speed Diagram



外觀尺寸圖 Dimensions:

UNIT:mm

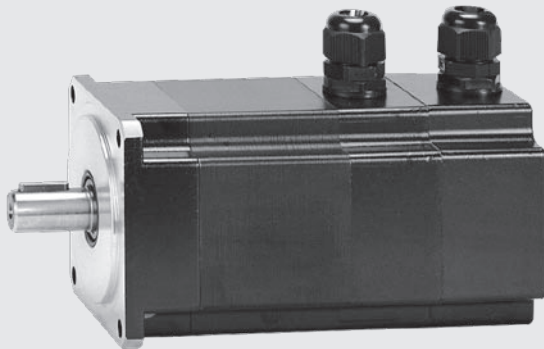


技術資料 Servo Motor Technical Datasheet:

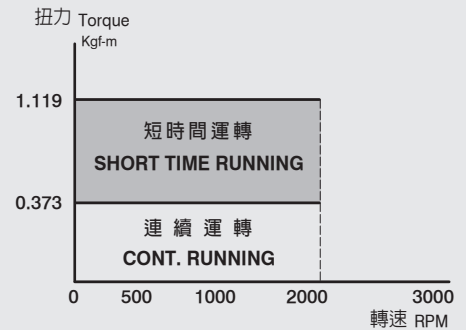
Model		LDSM85-BS		
項目		符號 Code	單位 Unit	200V
額定輸出	Rated output	PR	kW	0.6
適用驅動器 (額定)	Applicable driver	Idry	A	≥ 5
額定轉矩	Rated torque	TR	Kgf-m	0.299
額定電流	Rated current	IR	A	3.63
額定轉速	Rated speed	NR	rpm	2000
瞬間最大轉矩	Instant max. torque	TP	Kgf-m	0.897
瞬間最大電流	Instant max. current	IP	A	10.9
最大轉速	Max. speed	Nmax	rpm	3000
轉矩常數	Torque constant	KT	N•m/A	0.81
感應電壓常數	Induction voltage constant	KE	V/k rpm	45
轉子慣量 (J)	Rotor inertia (J)	JM	kg/cm ²	2.74
轉子飛輪效應	Rotor flywheel effect	GD ²	kg/cm ²	10.96
重量 (標準)	Weight (Standard)	W	kg	4

LDSM85-CS

永磁同步伺服馬達 Permanent Magnetic Synchronous Servo Motor

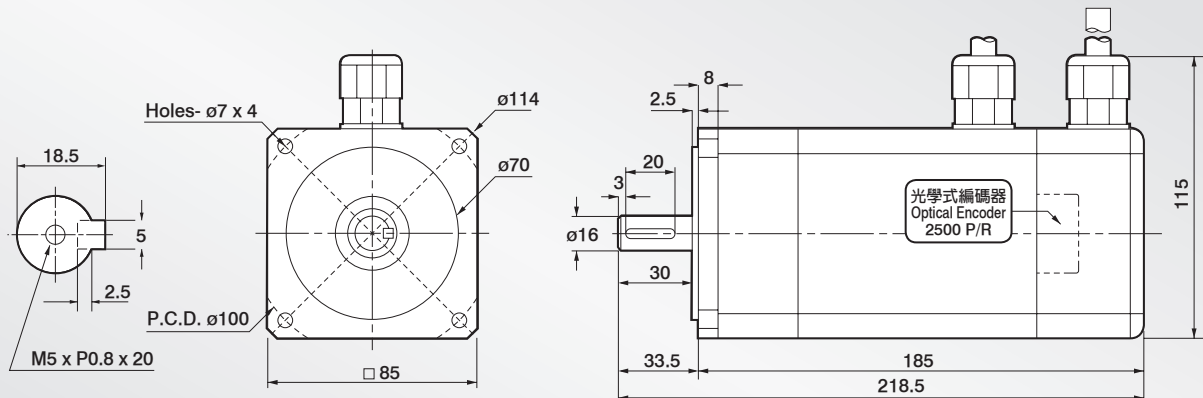


T-M 扭力轉速曲線圖
T-M Torque/Speed Diagram



外觀尺寸圖 Dimensions:

UNIT:mm



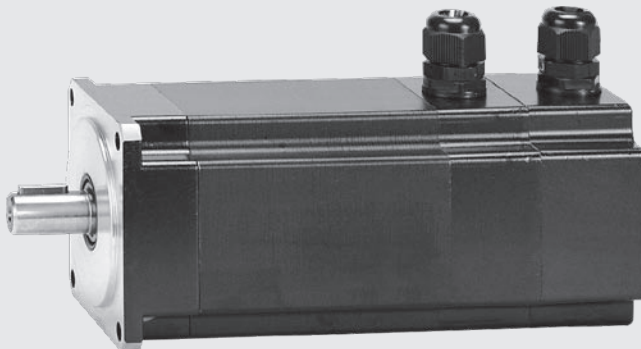
技術資料 Servo Motor Technical Datasheet:

Model		LDSM85-CS		
項目	符號 Code	單位 Unit	200V	
額定輸出	Rated output	PR	kW	0.75
適用驅動器 (額定)	Applicable driver	Idry	A	≥ 5
額定轉矩	Rated torque	TR	Kgf-m	0.373
額定電流	Rated current	IR	A	4.53
額定轉速	Rated speed	NR	rpm	2000
瞬間最大轉矩	Instant max. torque	TP	Kgf-m	1.119
瞬間最大電流	Instant max. current	IP	A	13.6
最大轉速	Max. speed	Nmax	rpm	3000
轉矩常數	Torque constant	KT	N•m/A	0.81
感應電壓常數	Induction voltage constant	KE	V/k rpm	45
轉子慣量 (J)	Rotor inertia (J)	JM	kg/cm ²	3.63
轉子飛輪效應	Rotor flywheel effect	GD ²	kg/cm ²	14.52
重量 (標準)	Weight (Standard)	W	kg	5

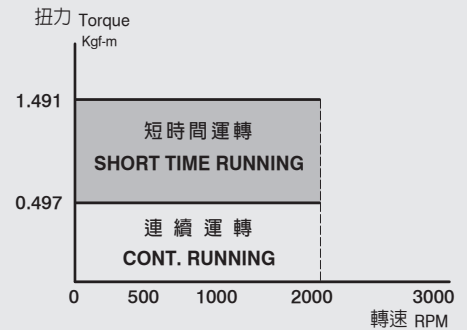
LDSM85-DS

永磁同步伺服馬達

Permanent Magnetic Synchronous Servo Motor

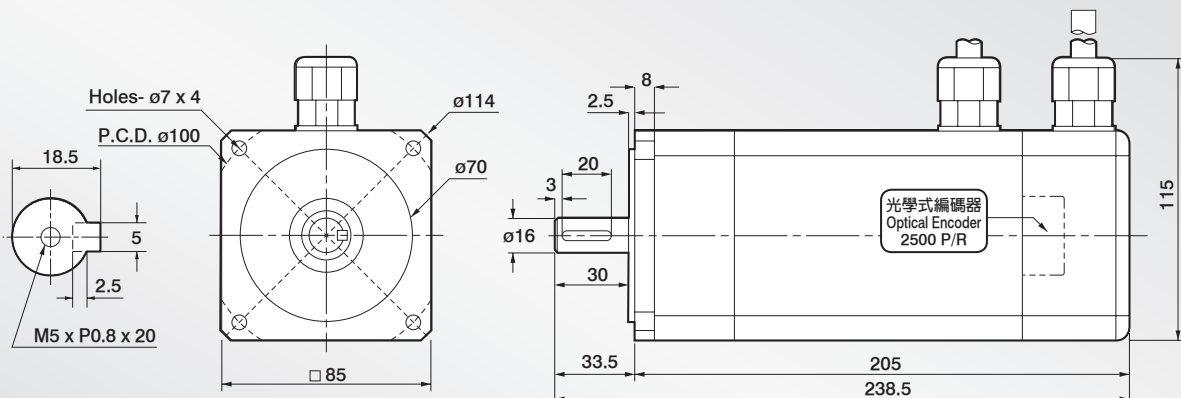


T-M 扭力轉速曲線圖
T-M Torque/Speed Diagram



外觀尺寸圖 Dimensions:

UNIT:mm



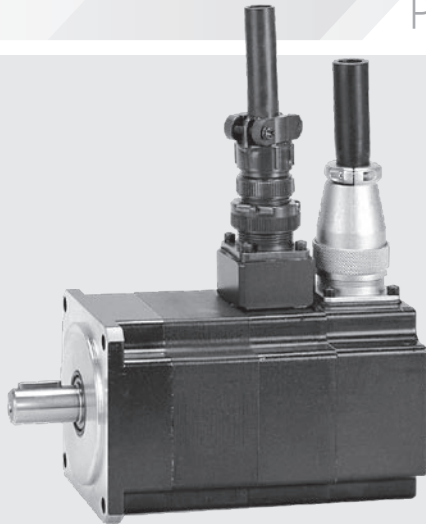
技術資料 Servo Motor Technical Datasheet:

Model		LDSM85-DS		
項目		符號 Code	單位 Unit	200V
額定輸出	Rated output	PR	kW	1
適用驅動器 (額定)	Applicable driver	Idry	A	≥ 5
額定轉矩	Rated torque	TR	Kgf-m	0.497
額定電流	Rated current	IR	A	6.04
額定轉速	Rated speed	NR	rpm	2000
瞬間最大轉矩	Instant max. torque	TP	Kgf-m	1.491
瞬間最大電流	Instant max. current	IP	A	18.1
最大轉速	Max. speed	Nmax	rpm	3000
轉矩常數	Torque constant	KT	N·m/A	0.81
感應電壓常數	Induction voltage constant	KE	V/k rpm	45
轉子慣量 (J)	Rotor inertia (J)	JM	kg/cm ²	4.51
轉子飛輪效應	Rotor flywheel effect	GD ²	kg/cm ²	18.04
重量 (標準)	Weight (Standard)	W	kg	6

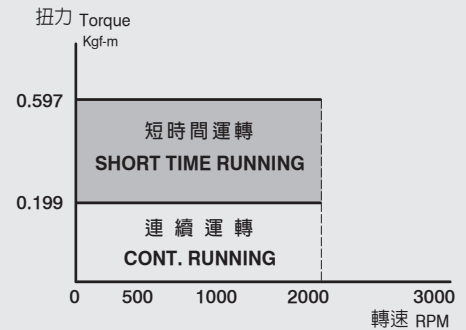
LDSM85-A

永磁同步伺服馬達

Permanent Magnetic Synchronous Servo Motor

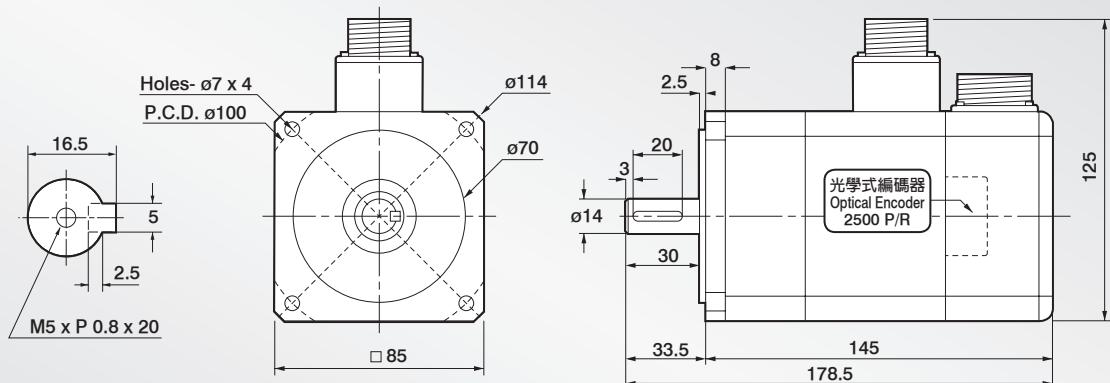


T-M 扭力轉速曲線圖
T-M Torque/Speed Diagram



外觀尺寸圖 Dimensions:

UNIT:mm



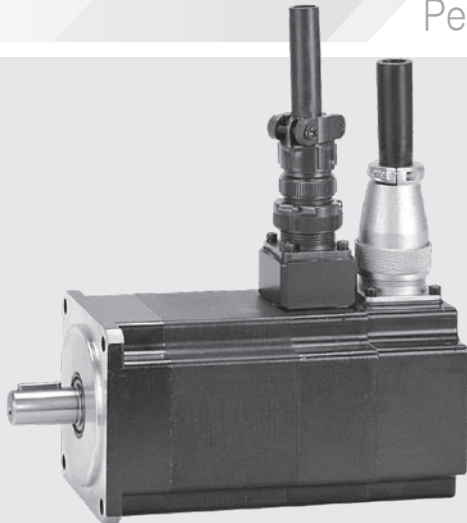
技術資料 Servo Motor Technical Datasheet:

Model		LDSM85-A		
項目	符號 Code	單位 Unit	200V	
額定輸出	Rated output	PR	kW	0.4
適用驅動器(額定)	Applicable driver	Idry	A	≥ 5
額定轉矩	Rated torque	TR	Kgf-m	0.199
額定電流	Rated current	IR	A	2.42
額定轉速	Rated speed	NR	rpm	2000
瞬間最大轉矩	Instant max. torque	TP	Kgf-m	0.597
瞬間最大電流	Instant max. current	IP	A	7.25
最大轉速	Max. speed	Nmax	rpm	3000
轉矩常數	Torque constant	KT	N•m/A	0.81
感應電壓常數	Induction voltage constant	KE	V/k rpm	45
轉子慣量(J)	Rotor inertia (J)	JM	kg/cm ²	1.86
轉子飛輪效應	Rotor flywheel effect	GD ²	kg/cm ²	7.44
重量(標準)	Weight (Standard)	W	kg	3

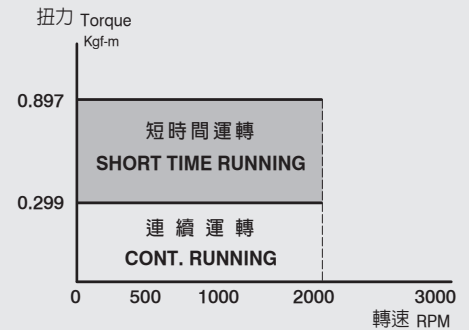
LDSM85-B

永磁同步伺服馬達

Permanent Magnetic Synchronous Servo Motor

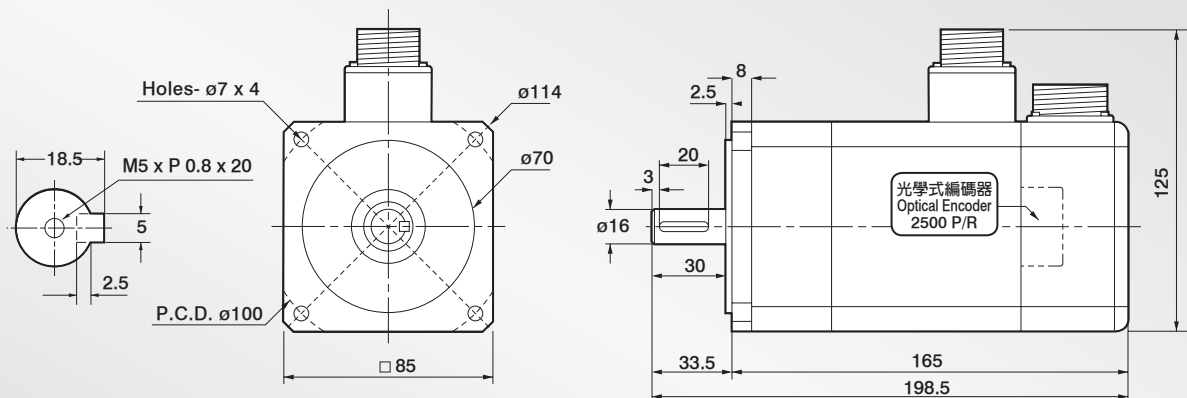


T-M 扭力轉速曲線圖
T-M Torque/Speed Diagram



外觀尺寸圖 Dimensions:

UNIT:mm



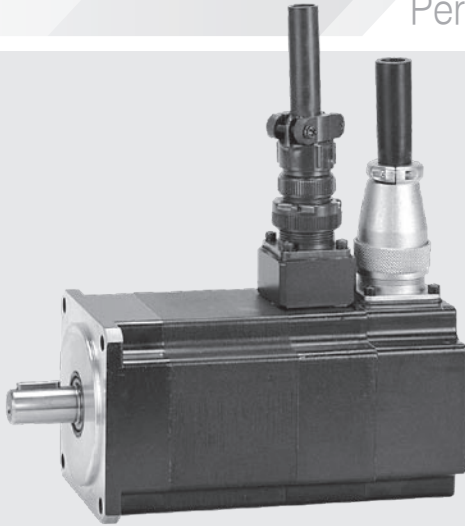
技術資料 Servo Motor Technical Datasheet:

Model		LDSM85-B		
項目		符號 Code	單位 Unit	200V
額定輸出	Rated output	PR	kW	0.6
適用驅動器 (額定)	Applicable driver	Idry	A	≥ 5
額定轉矩	Rated torque	TR	Kgf-m	0.299
額定電流	Rated current	IR	A	3.63
額定轉速	Rated speed	NR	rpm	2000
瞬間最大轉矩	Instant max. torque	TP	Kgf-m	0.897
瞬間最大電流	Instant max. current	IP	A	10.9
最大轉速	Max. speed	Nmax	rpm	3000
轉矩常數	Torque constant	KT	N·m/A	0.81
感應電壓常數	Induction voltage constant	KE	V/k rpm	45
轉子慣量 (J)	Rotor inertia (J)	JM	kg/cm ²	2.74
轉子飛輪效應	Rotor flywheel effect	GD ²	kg/cm ²	10.96
重量 (標準)	Weight (Standard)	W	kg	4

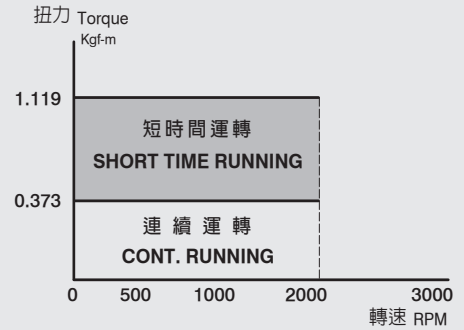
LDSM85-C

永磁同步伺服馬達

Permanent Magnetic Synchronous Servo Motor

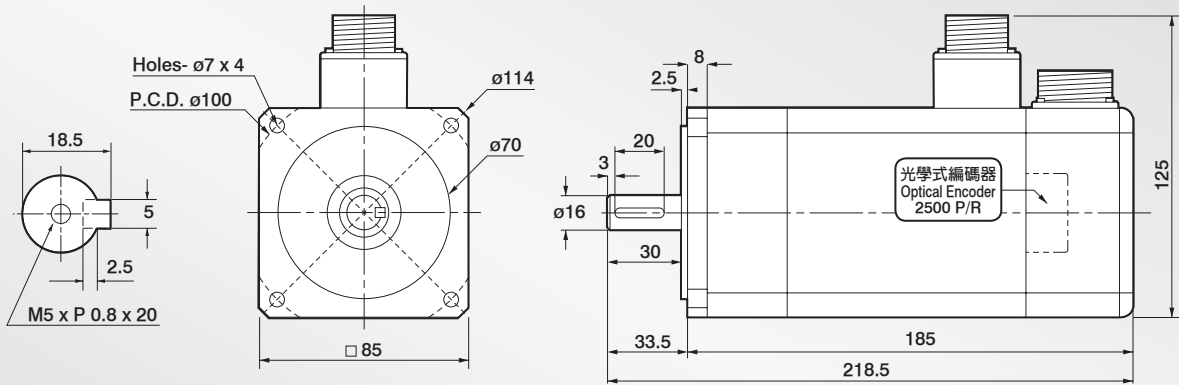


T-M 扭力轉速曲線圖
T-M Torque/Speed Diagram



外觀尺寸圖 Dimensions:

UNIT:mm



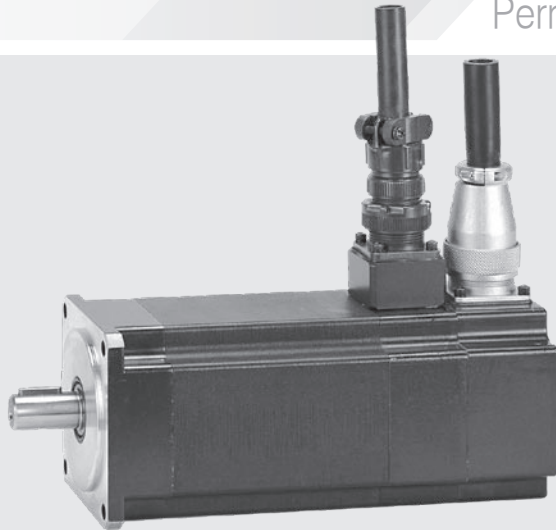
技術資料 Servo Motor Technical Datasheet:

Model		LDSM85-C		
項目		符號 Code	單位 Unit	200V
額定輸出	Rated output	PR	kW	0.75
適用驅動器 (額定)	Applicable driver	Idry	A	≥ 5
額定轉矩	Rated torque	TR	Kgf-m	0.373
額定電流	Rated current	IR	A	4.53
額定轉速	Rated speed	NR	rpm	2000
瞬間最大轉矩	Instant max. torque	TP	Kgf-m	1.119
瞬間最大電流	Instant max. current	IP	A	13.6
最大轉速	Max. speed	Nmax	rpm	3000
轉矩常數	Torque constant	KT	N•m/A	0.81
感應電壓常數	Induction voltage constant	KE	V/k rpm	45
轉子慣量 (J)	Rotor inertia (J)	JM	kg/cm ²	3.63
轉子飛輪效應	Rotor flywheel effect	GD ²	kg/cm ²	14.52
重量 (標準)	Weight (Standard)	W	kg	5

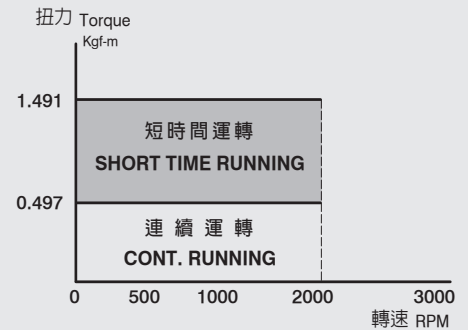
LDSM85-D

永磁同步伺服馬達

Permanent Magnetic Synchronous Servo Motor

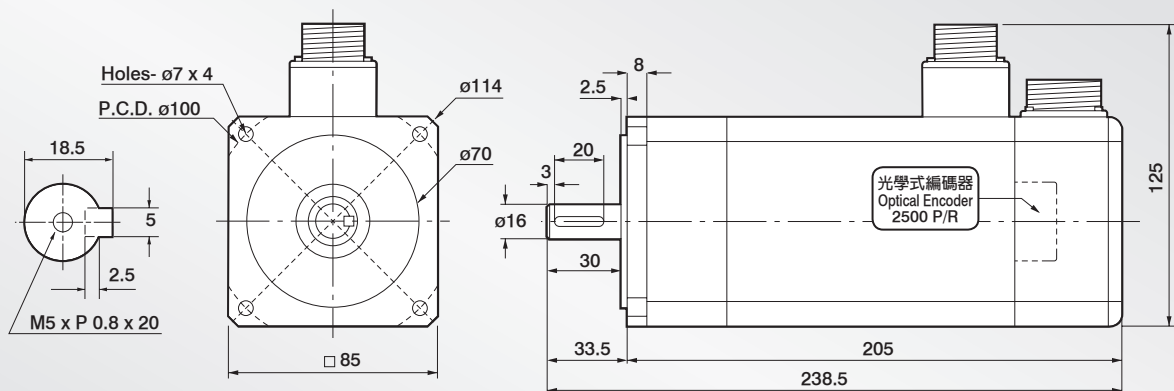


T-M 扭力轉速曲線圖
T-M Torque/Speed Diagram



外觀尺寸圖 Dimensions:

UNIT:mm



技術資料 Servo Motor Technical Datasheet:

Model		LDSM85-D		
項目		符號 Code	單位 Unit	200V
額定輸出	Rated output	PR	kW	1
適用驅動器 (額定)	Applicable driver	Idry	A	≥ 5
額定轉矩	Rated torque	TR	Kgf-m	0.497
額定電流	Rated current	IR	A	6.04
額定轉速	Rated speed	NR	rpm	2000
瞬間最大轉矩	Instant max. torque	TP	Kgf-m	1.491
瞬間最大電流	Instant max. current	IP	A	18.1
最大轉速	Max. speed	Nmax	rpm	3000
轉矩常數	Torque constant	KT	N·m/A	0.81
感應電壓常數	Induction voltage constant	KE	V/k rpm	45
轉子慣量 (J)	Rotor inertia (J)	JM	kg/cm ²	4.51
轉子飛輪效應	Rotor flywheel effect	GD ²	kg/cm ²	18.04
重量 (標準)	Weight (Standard)	W	kg	6