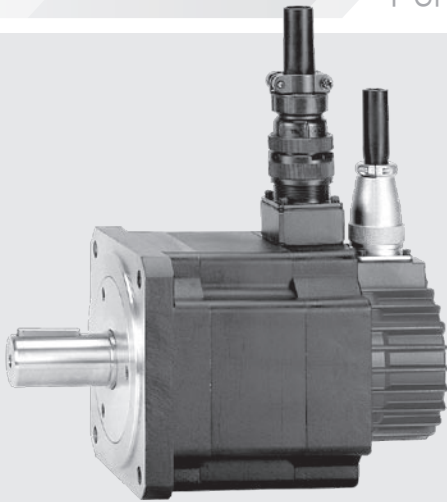


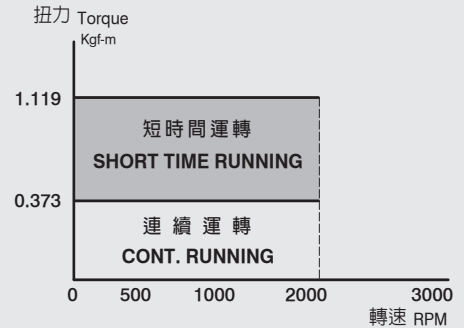
# LDSM 125-A

# 永磁同步伺服馬達

Permanent Magnetic Synchronous Servo Motor

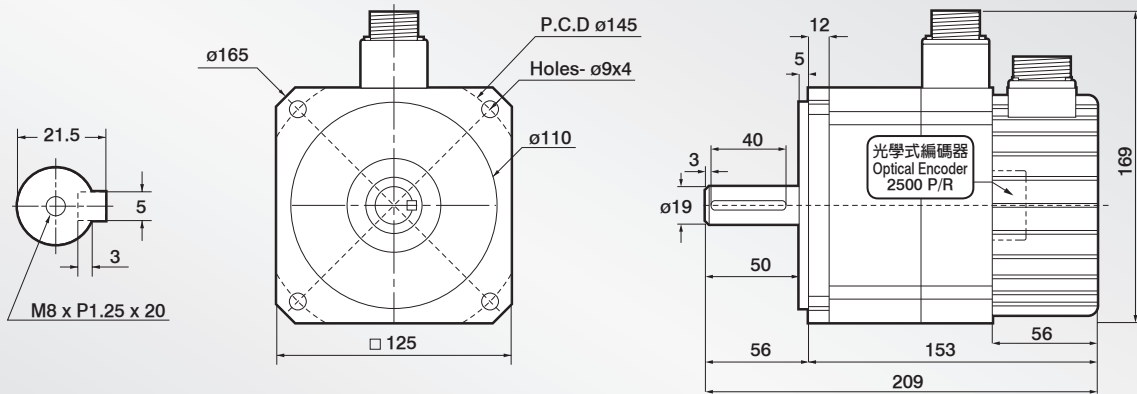


T-M 扭力轉速曲線圖  
T-M Torque/Speed Diagram



## 外觀尺寸圖 Dimensions:

UNIT:mm



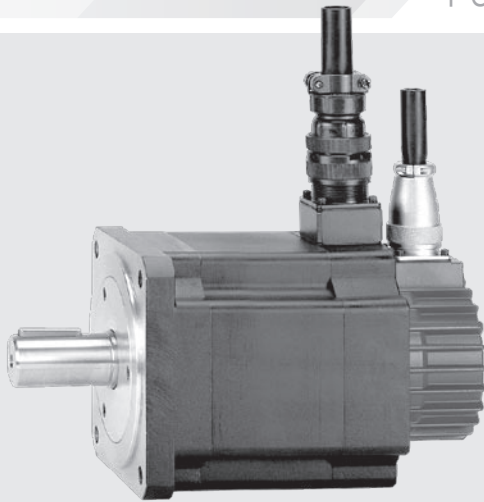
## 技術資料 Servo Motor Technical Datasheet:

Model		LDSM125-A			
項目		符號 Code	單位 Unit	200V	400V
額定輸出	Rated output	PR	kW	0.75	0.75
適用驅動器 (額定)	Applicable driver	ldry	A	$\geq 5$	$\geq 5$
額定轉矩	Rated torque	TR	Kgf-m	0.373	0.373
額定電流	Rated current	IR	A	3.4	1.7
額定轉速	Rated speed	NR	rpm	2000	2000
瞬間最大轉矩	Instant max. torque	TP	Kgf-m	1.119	1.119
瞬間最大電流	Instant max. current	IP	A	10.2	5.1
最大轉速	Max. speed	Nmax	rpm	3000	3000
轉矩常數	Torque constant	KT	N•m/A	1.08	2.15
感應電壓常數	Induction voltage constant	KE	V/k rpm	60	120
轉子慣量 (J)	Rotor inertia (J)	JM	kg/cm <sup>2</sup>	7.35	7.35
轉子飛輪效應	Rotor flywheel effect	GD <sup>2</sup>	kg/cm <sup>2</sup>	29.4	29.4
重量 (標準)	Weight (Standard)	W	kg	5.5	5.5

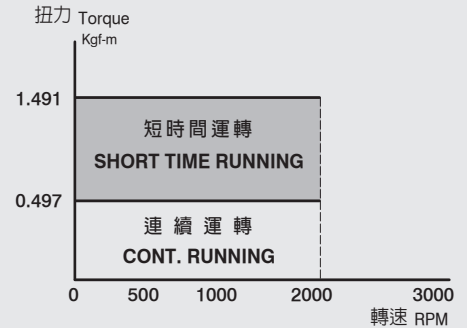
# LDSM125-B

## 永磁同步伺服馬達

Permanent Magnetic Synchronous Servo Motor

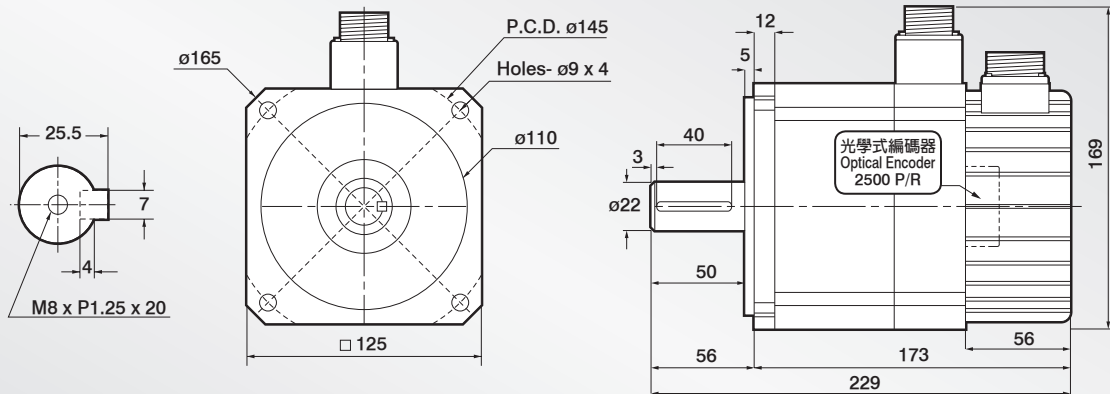


T-M 扭力轉速曲線圖  
T-M Torque/Speed Diagram



### 外觀尺寸圖 Dimensions:

UNIT:mm



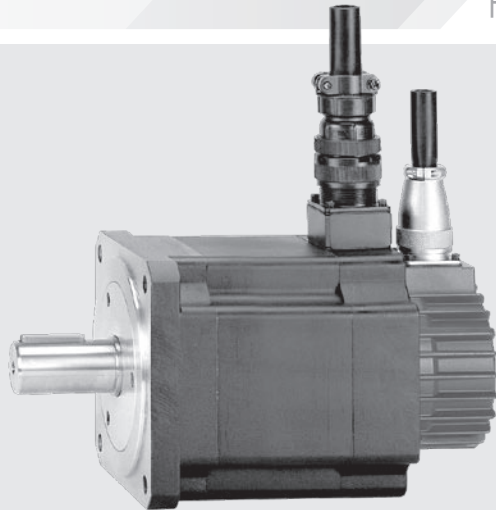
### 技術資料 Servo Motor Technical Datasheet:

Model		LDSM125-B			
項目		符號 Code	單位 Unit	200V	400V
額定輸出	Rated output	PR	kW	1	1
適用驅動器 (額定)	Applicable driver	Idry	A	≥ 5	≥ 5
額定轉矩	Rated torque	TR	Kgf-m	0.497	0.497
額定電流	Rated current	IR	A	4.53	2.26
額定轉速	Rated speed	NR	rpm	2000	2000
瞬間最大轉矩	Instant max. torque	TP	Kgf-m	1.491	1.491
瞬間最大電流	Instant max. current	IP	A	13.6	6.79
最大轉速	Max. speed	Nmax	rpm	3000	3000
轉矩常數	Torque constant	KT	N·m/A	1.08	2.15
感應電壓常數	Induction voltage constant	KE	V/k rpm	60	120
轉子慣量 (J)	Rotor inertia (J)	JM	kg/cm <sup>2</sup>	11.94	11.94
轉子飛輪效應	Rotor flywheel effect	GD <sup>2</sup>	kg/cm <sup>2</sup>	47.76	47.76
重量 (標準)	Weight (Standard)	W	kg	6.5	6.5

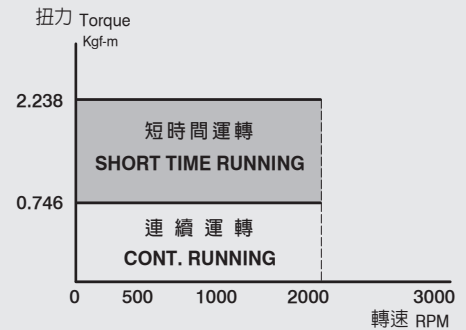
# LDSM125-C

## 永磁同步伺服馬達

Permanent Magnetic Synchronous Servo Motor

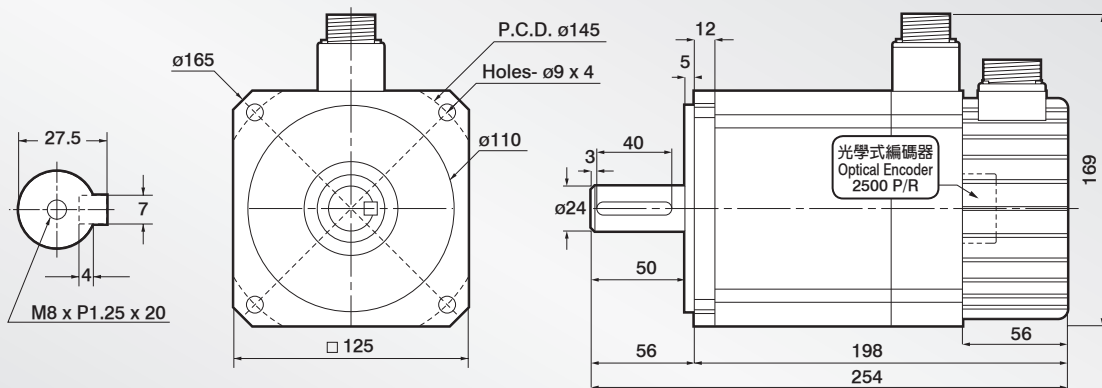


T-M 扭力轉速曲線圖  
T-M Torque/Speed Diagram



### 外觀尺寸圖 Dimensions:

UNIT:mm



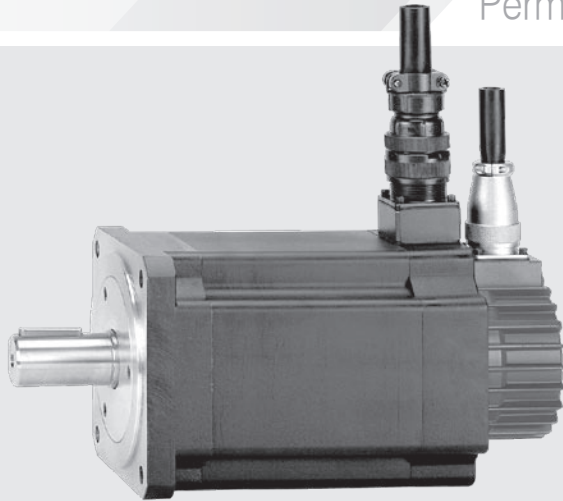
### 技術資料 Servo Motor Technical Datasheet:

Model		LDSM125-C			
項目		符號 Code	單位 Unit	200V	400V
額定輸出	Rated output	PR	kW	1.5	1.5
適用驅動器 (額定)	Applicable driver	Idry	A	$\geq 10$	$\geq 5$
額定轉矩	Rated torque	TR	Kgf-m	0.746	0.746
額定電流	Rated current	IR	A	6.8	3.4
額定轉速	Rated speed	NR	rpm	2000	2000
瞬間最大轉矩	Instant max. torque	TP	Kgf-m	2.238	2,238
瞬間最大電流	Instant max. current	IP	A	20.4	10.2
最大轉速	Max. speed	Nmax	rpm	3000	3000
轉矩常數	Torque constant	KT	N•m/A	1.08	2.15
感應電壓常數	Induction voltage constant	KE	V/k rpm	60	120
轉子慣量 (J)	Rotor inertia (J)	JM	kg/cm <sup>2</sup>	17.6	17.6
轉子飛輪效應	Rotor flywheel effect	GD <sup>2</sup>	kg/cm <sup>2</sup>	70.4	70.4
重量 (標準)	Weight (Standard)	W	kg	9.4	9.4

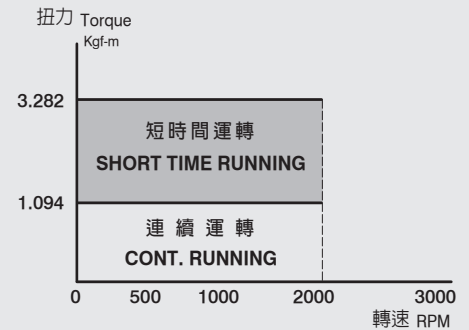
# LDSM125-D

## 永磁同步伺服馬達

Permanent Magnetic Synchronous Servo Motor

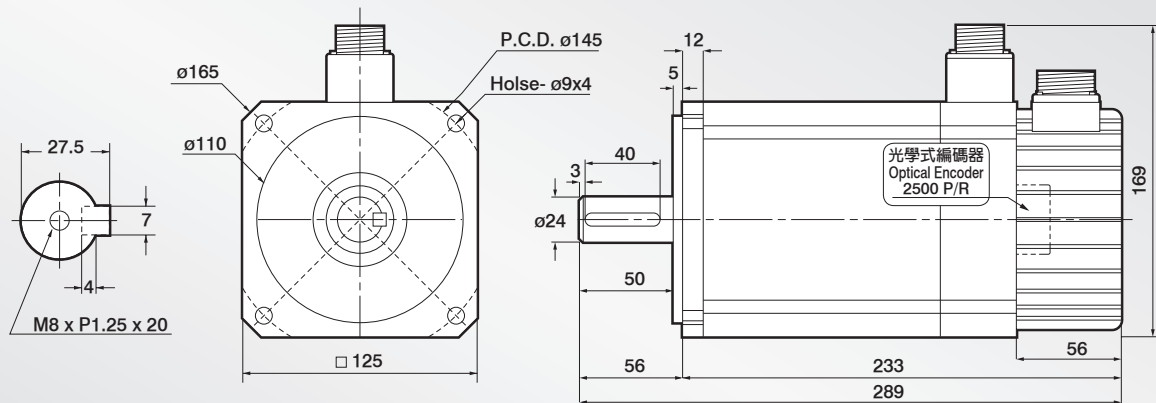


T-M 扭力轉速曲線圖  
T-M Torque/Speed Diagram



### 外觀尺寸圖 Dimensions:

UNIT:mm



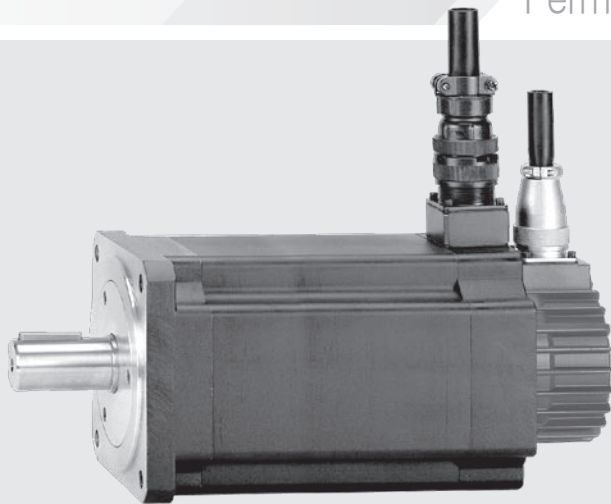
### 技術資料 Servo Motor Technical Datasheet:

Model		LDSM125-D			
項目		符號 Code	單位 Unit	200V	400V
額定輸出	Rated output	PR	kW	2.2	2.2
適用驅動器 (額定)	Applicable driver	Idry	A	$\geq 10$	$\geq 5$
額定轉矩	Rated torque	TR	Kgf-m	1.094	1.094
額定電流	Rated current	IR	A	9.97	4.98
額定轉速	Rated speed	NR	rpm	2000	2000
瞬間最大轉矩	Instant max. torque	TP	Kgf-m	3.282	3.282
瞬間最大電流	Instant max. current	IP	A	29.9	15
最大轉速	Max. speed	Nmax	rpm	3000	3000
轉矩常數	Torque constant	KT	N·m/A	1.08	2.15
感應電壓常數	Induction voltage constant	KE	V/k rpm	60	120
轉子慣量 (J)	Rotor inertia (J)	JM	kg/cm <sup>2</sup>	25.72	25.72
轉子飛輪效應	Rotor flywheel effect	GD <sup>2</sup>	kg/cm <sup>2</sup>	102.88	102.88
重量 (標準)	Weight (Standard)	W	kg	12.5	12.5

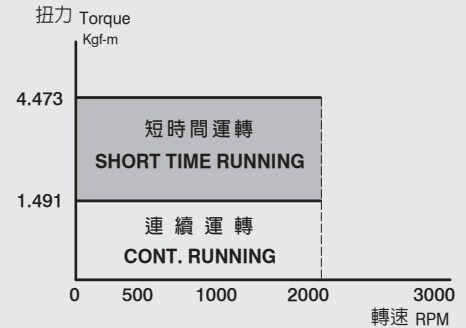
# LDSM 125-E

# 永磁同步伺服馬達

Permanent Magnetic Synchronous Servo Motor

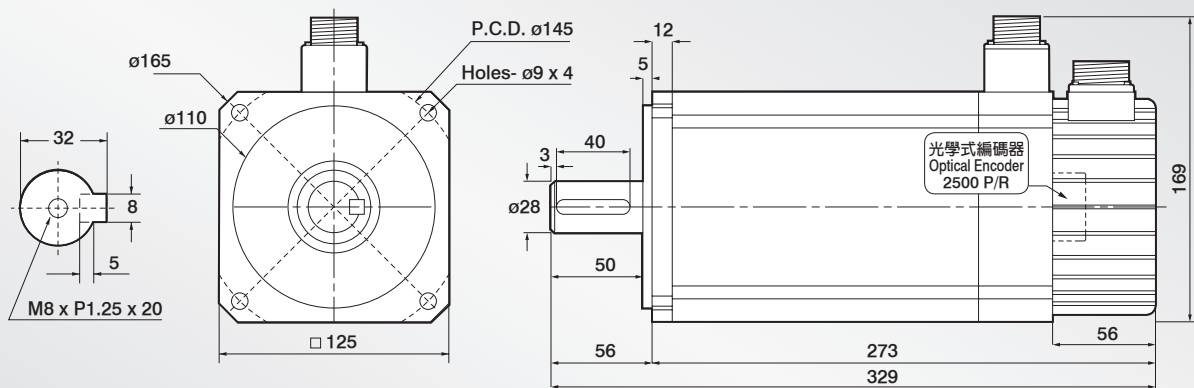


T-M 扭力轉速曲線圖  
T-M Torque/Speed Diagram



## 外觀尺寸圖 Dimensions:

UNIT:mm



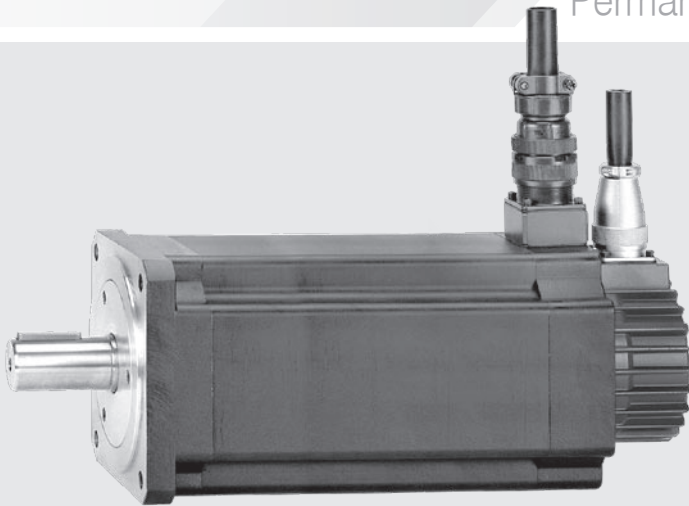
## 技術資料 Servo Motor Technical Datasheet:

Model		LDSM125-E			
項目		符號 Code	單位 Unit	200V	400V
額定輸出	Rated output	PR	kW	3	3
適用驅動器 (額定)	Applicable driver	Idry	A	$\geq 14$	$\geq 7$
額定轉矩	Rated torque	TR	Kgf-m	1.491	1.491
額定電流	Rated current	IR	A	13.6	6.79
額定轉速	Rated speed	NR	rpm	2000	2000
瞬間最大轉矩	Instant max. torque	TP	Kgf-m	4.473	4.473
瞬間最大電流	Instant max. current	IP	A	40.8	20.4
最大轉速	Max. speed	Nmax	rpm	3000	3000
轉矩常數	Torque constant	KT	N•m/A	1.08	2.15
感應電壓常數	Induction voltage constant	KE	V/k rpm	60	120
轉子慣量 (J)	Rotor inertia (J)	JM	kg/cm <sup>2</sup>	34.9	34.9
轉子飛輪效應	Rotor flywheel effect	GD <sup>2</sup>	kg/cm <sup>2</sup>	139.6	139.6
重量 (標準)	Weight (Standard)	W	kg	16	16

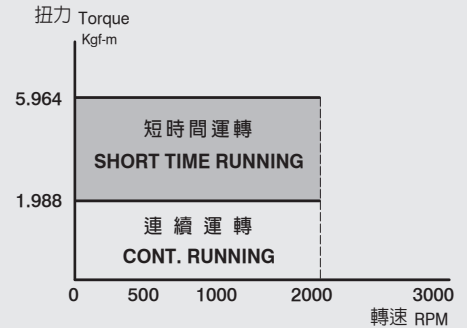
# LDSM125-F

## 永磁同步伺服馬達

Permanent Magnetic Synchronous Servo Motor

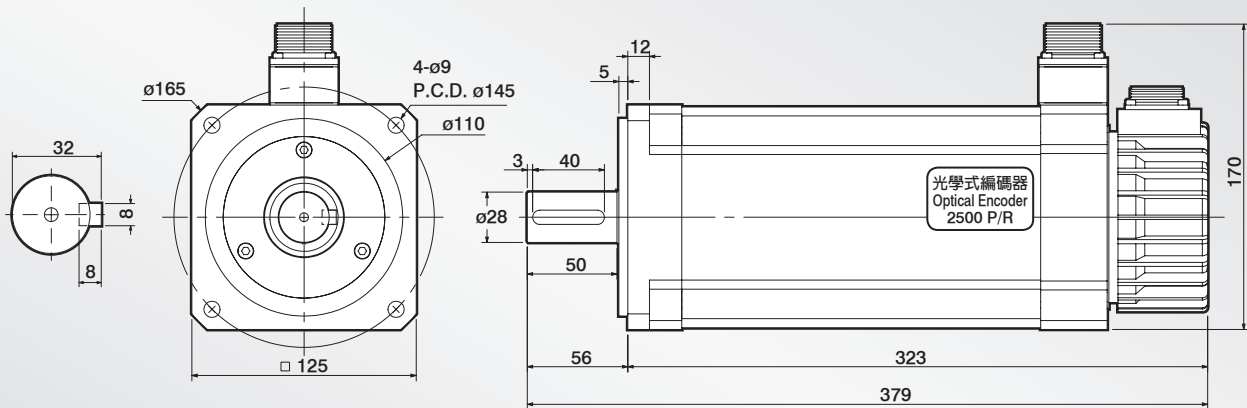


T-M 扭力轉速曲線圖  
T-M Torque/Speed Diagram



### 外觀尺寸圖 Dimensions:

UNIT:mm



### 技術資料 Servo Motor Technical Datasheet:

Model		LDSM125-F			
項目		符號 Code	單位 Unit	200V	400V
額定輸出	Rated output	PR	kW	4	4
適用驅動器 (額定)	Applicable driver	Idry	A	$\geq 18$	$\geq 9$
額定轉矩	Rated torque	TR	Kgf-m	1.988	1.988
額定電流	Rated current	IR	A	18.1	9.06
額定轉速	Rated speed	NR	rpm	2000	2000
瞬間最大轉矩	Instant max. torque	TP	Kgf-m	5.964	5.964
瞬間最大電流	Instant max. current	IP	A	54.3	27.2
最大轉速	Max. speed	Nmax	rpm	3000	3000
轉矩常數	Torque constant	KT	N·m/A	1.08	2.15
感應電壓常數	Induction voltage constant	KE	V/k rpm	60	120
轉子慣量 (J)	Rotor inertia (J)	JM	kg/cm <sup>2</sup>	46.39	46.39
轉子飛輪效應	Rotor flywheel effect	GD <sup>2</sup>	kg/cm <sup>2</sup>	185.56	185.56
重量 (標準)	Weight (Standard)	W	kg	28	28