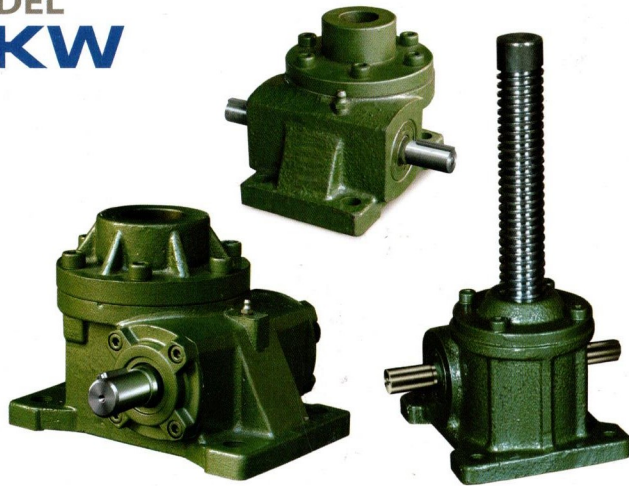




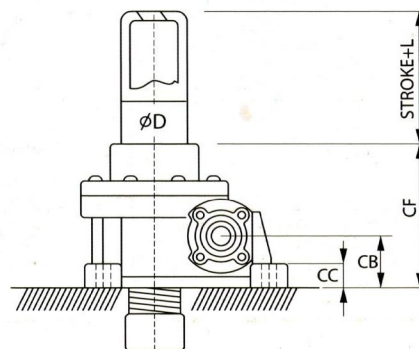
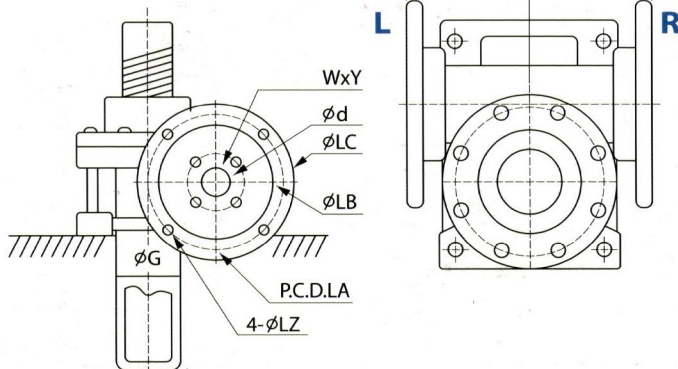
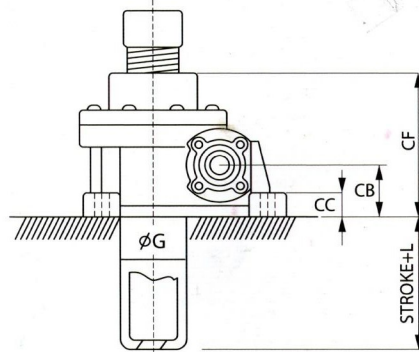
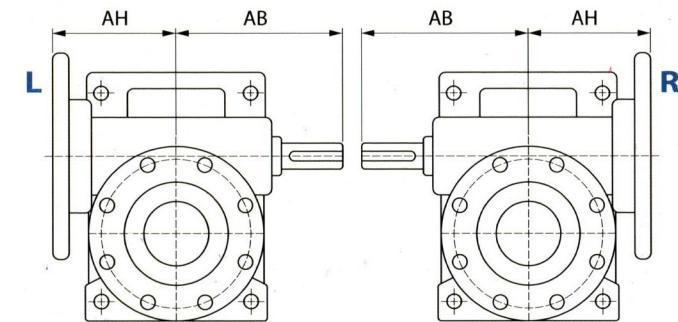
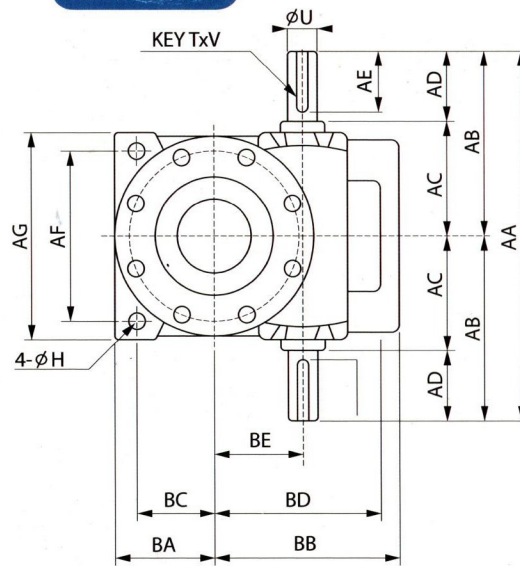
# 螺旋昇降機

## ELEVATOR SPIRAL MACHINE

### MODEL PKW



#### 標準雙入力



MODEL SIZE CAPACITY	PKW 1T	PKW 2T	PKW 3T	PKW 5T	PKW 10T	PKW 15T	PKW 20T	PKW 30T	PKW 50T
LIFTING SCREW DIAMETER PITCH	1" ACME P=5	1" ACME P=5	1 1/4" ACME P=6	1 1/2" ACME P=6	1 3/4" ACME P=8	2" ACME P=8	1 1/2" ACME P=10	3" ACME P=12	4" ACME P=20
WORM GEAR RATIO	1/5 1/10 1/20	1/5 1/10 1/20	1/6 1/12 1/24	1/6 1/12 1/24	1/8 1/16 1/32	1/8 1/16 1/32	1/10 1/20 1/40	1/12 1/18 1/36	1/10 1/20 1/40
AA	140	170	220	220	256	264	316	390	522
AB	70	85	110	110	128	132	158	195	261
AC	40	55	70	70	88	92	108	130	196
AD	30	30	40	40	40	40	50	65	65
AE	25	25	35	35	35	35	45	55	60
AF	80	66	80	90	100	110	140	160	
AG	102	90	110	120	140	150	180	210	
AH		60	70	80	100	100	120	150	240
BA	44	50	57	60	90	90	95	115	
BB	74	85	98	110	140	140	155	180	261
BC	25	38	42	45	70	70	75	90	
BD	63	73	83	95	120	120	135	155	235
BE	30	35	40	50	60	60	70	80	135
CB	38	40	50	50	60	60	70	80	110
CC	13	20	23	23	25	25	30	30	32
CF	90	110	130	130	160	160	180	210	320
D		48	57	60	70	82.6	101.5		
G		42	54	63.5	76	82.6	105		
U	14	15	18	18	25	25	28	32	48
T x V	5 x 3	5 x 3	5 x 3	5 x 3	7 x 4	7 x 4	7 x 4	10 x 5	12 x 5
L		Stroke +55	Stroke +60	Stroke +60	Stroke +65	Stroke +65	Stroke +75		
LA		130	130	130	165	165	165	215	265
LB		110	110	110	130	130	130	180	230
LC		160	160	160	200	200	200	250	250
LZ		M8 P1.25	M8 P1.25	M8 P1.25	M10 P1.5	M10 P1.5	M10 P1.5	M12 P1.75	M16 P2.0
d W x Y WITH MOTOR		11 5x2.3 1/4HP	14 5x2.3 1/2HP	14 5x2.3 1/2HP	19 6x2.8 1HP	19 6x2.8 1HP	24 8x3.3 2HP	28 8x3.3 3HP	38 10x3.3 7-1/2HP
d W x Y WITH MOTOR					24 8x3.3 2HP	24 8x3.3 2HP			
H	9	12	12	14	18	18	18	22	22