

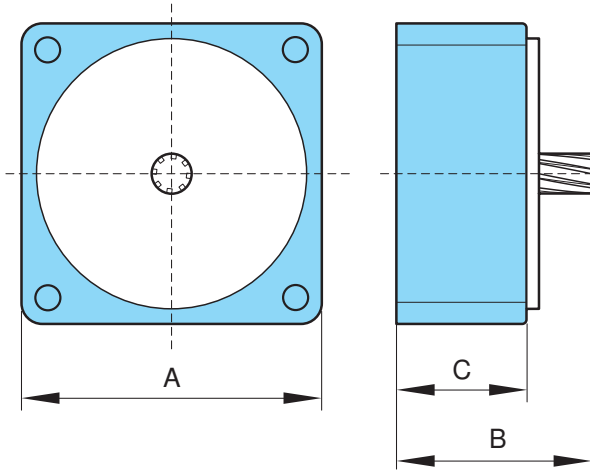


1:10 Medium Reducer

若單一減速機無法得到所需的減速比時，
可考慮加裝一個或多個減速機，來獲得更大的減速比。



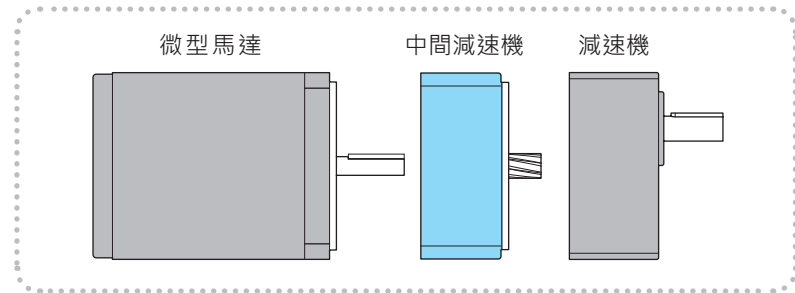
減速比 1:10 之中間減速機



安裝尺寸

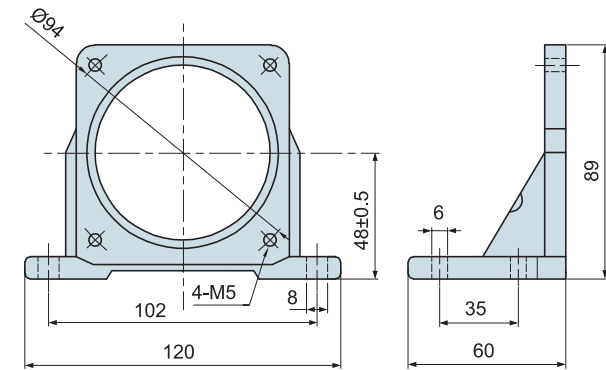
6W、15W、25W、40W、60W、90W、GN 與 GU 機種

型號	馬力	A	B	C
2 60mm	6W	60	39	26
3 70mm	15W	70	39	26
4 80mm	25W	80	39	26
5 90mm	GN 40~60W	90	59	40
	GU 60~150W	90	59	40

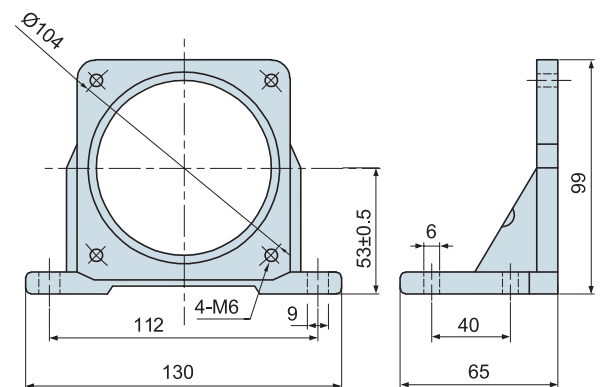


L 形腳架

PAL-4N(80mm用)



PAL-5N(90mm用)

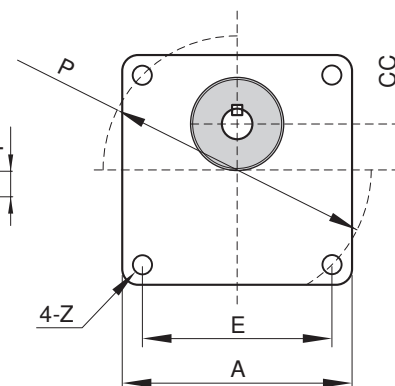
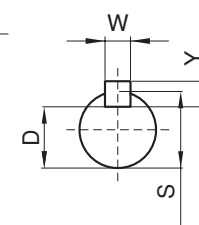
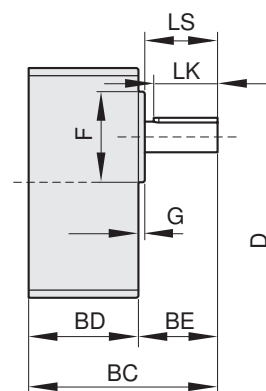
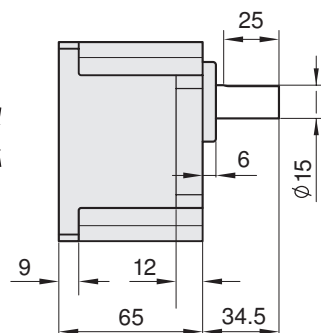
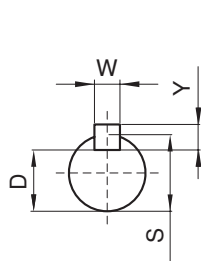
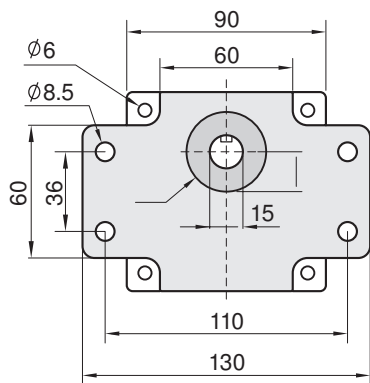
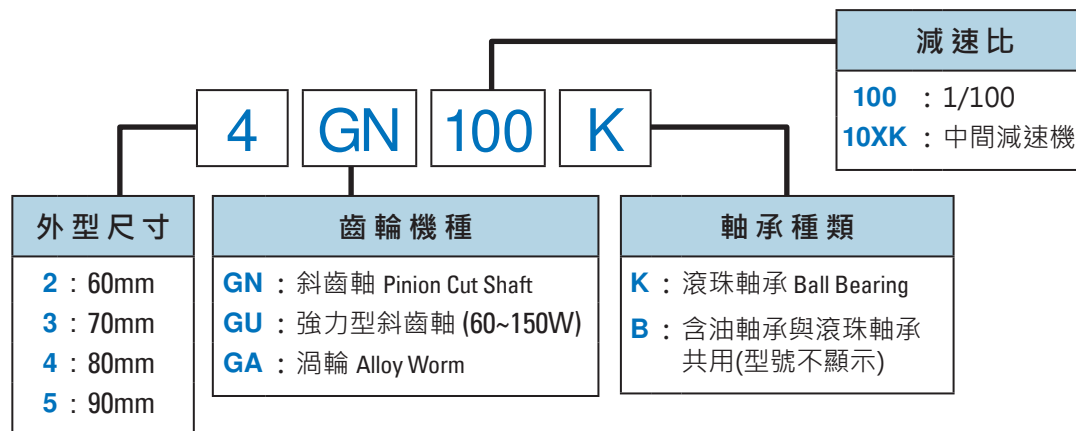




附固定耳



四方型



尺寸表 DIMENSION (m/m)

型號 Model	馬力 HP	A	BC	BD	BE	CC	F	G	P	Z	E	軸端 SHAFT				重量 KG
												LK	S	D	WxYxLK	
2 60mm	6W (GN)	60	64 (74)	32 (42)	32	10	18	4.5	70	M4	49.5	27.5	8	7	-	0.34 (0.39)
3 70mm	15W (GN)	70	64 (74)	32 (42)	32	15	30	2.0	82	M5	58	30	10	9	4x4x25	0.52 (0.58)
4 80mm	25W (GN)	80	68 (82)	36 (50)	32	15	34	2.5	94	M5	66.5	29.5	10	9	4x4x25	0.66 (0.81)
5 90mm	40W (GN)	90	74 (90)	43 (59)	31	18	34	2.5	104	M6	73.6	28.5	12	9.5	4x4x25	1.20 (1.40)
	60W (GN)	90	74 (90)	43 (59)	31	18	34	2.5	104	M6	73.6	28.5	12	9.5	4x4x25	1.20 (1.40)
	60W (GU)	90	101	65	36	18	34	6.0	104	M6	73.6	30	15	12	5x5x25	1.20 (1.40)
	90W (GU)	90	101	65	36	18	34	6.0	104	M6	73.6	30	15	12	5x5x25	1.20 (1.40)
	120W (GU)	90	101	65	36	18	34	6.0	104	M6	73.6	30	15	12	5x5x25	1.20 (1.40)
	150W (GU)	90	101	65	36	18	34	6.0	104	M6	73.6	30	15	12	5x5x25	1.20 (1.40)